

LOS GATOS VEGETATION MANAGEMENT PLAN
Worcester Park Treatments

Worcester Park (11.33 Acres)
 Trail (2,698.35 Feet)

Treatment Type

Fuel Reduction Area (2.33 Acres)

Mow / Graze (0.38 Acre)

Shaded Fuel Break (4.82 Acres)

Defensible Space (2.90 Acres)

Woody Debris & Dense Understory (1.25 Acres)

Invasive Species

Acacia, Ivy, & Vinca (0.57 Acre)

Broom (0.09 Acre)

Ivy (1.25 Acres)

Tree of Heaven (1.10 Acres)

Santa Clara County, Ca
 NAD 1983 UTM Zone 10N

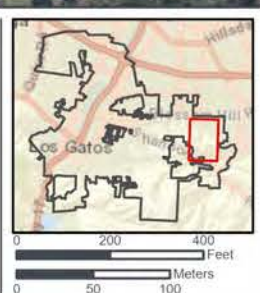


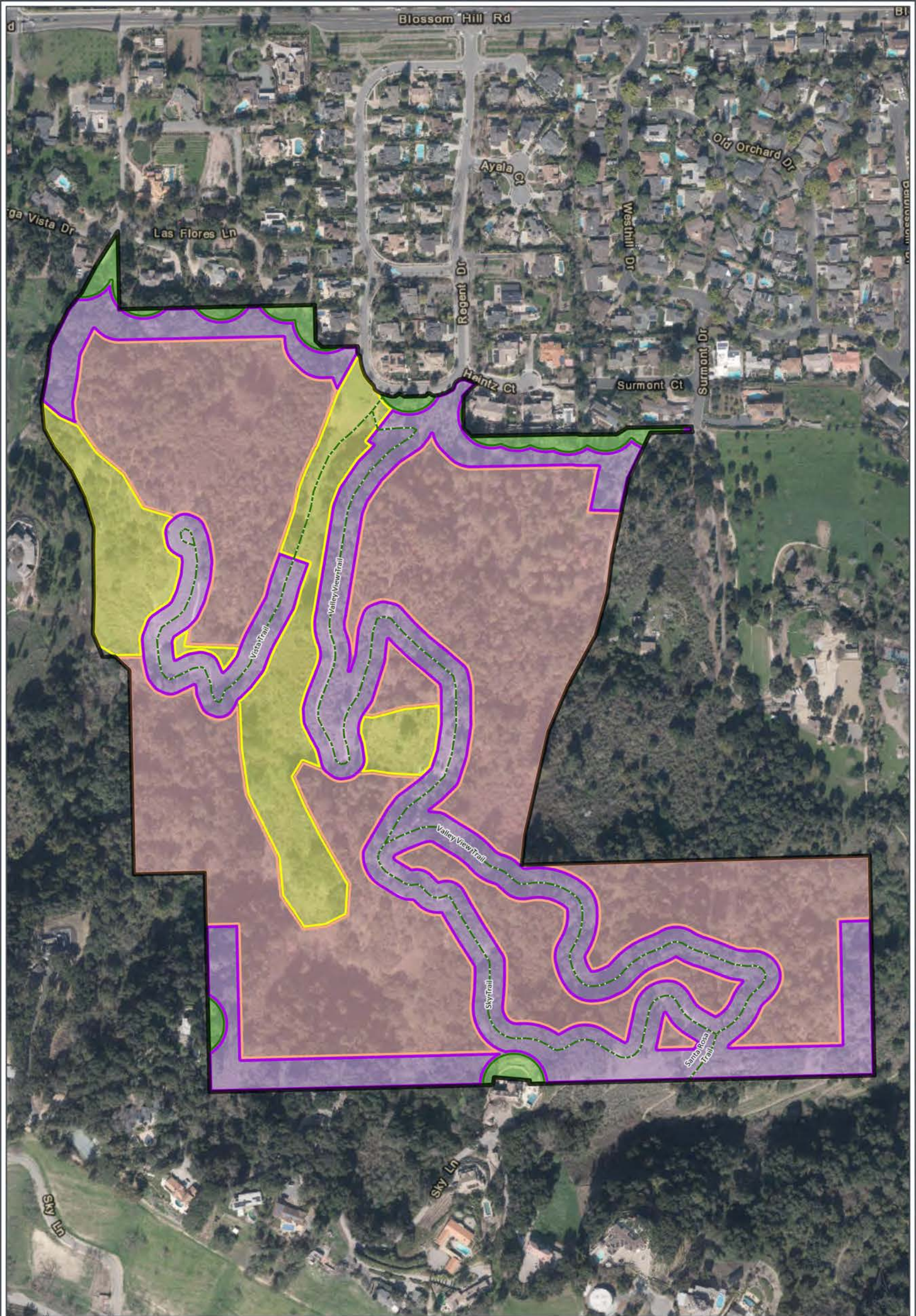


LOS GATOS VEGETATION MANAGEMENT PLAN
Santa Rosa Open Space and Recreation Area Treatments

- | | | |
|-------------------------------------|--|---------------------------------|
| Santa Rosa Open Space (75.89 Acres) | Invasive Species
Eucalyptus (0.25 Acre) | Mow / Graze (6.13 Acres) |
| Trail (6,041.67 Feet) | Treatment Type
Defensible Space (3.83 Acres) | Shaded Fuel Break (32.40 Acres) |
| Fire Road (2,961.86 Feet) | Fuel Reduction Area (33.55 Acres) | NHD
Stream/Creek |

Santa Clara County, Ca
 NAD 1983 UTM Zone 10N

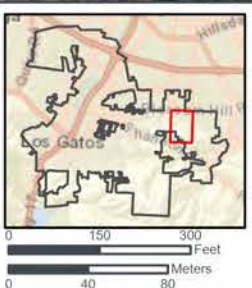


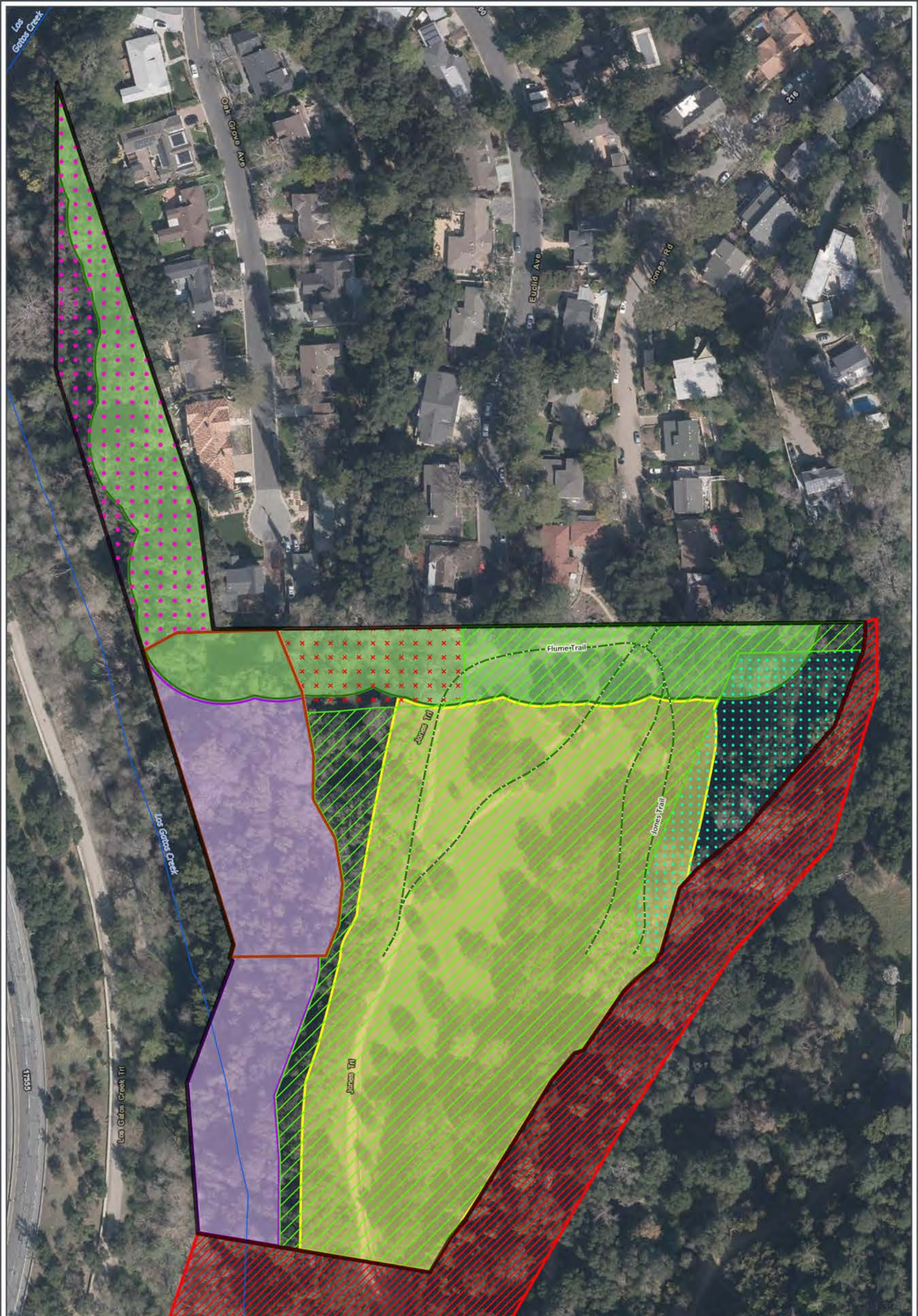


LOS GATOS VEGETATION
MANAGEMENT PLAN
**Heintz Open Space
and Recreation Area
Treatments**

- Heintz Open Space (88.12 Acres)
- Trail (8,428.98 Feet)
- Treatment Type**
- Defensible Space (2.04 Acres)
- Fuel Reduction Area (49.10 Acres)
- Mow / Graze (10.29 Acres)
- Shaded Fuel Break (26.67 Acres)

Santa Clara County, Ca
NAD 1983 UTM Zone 10N

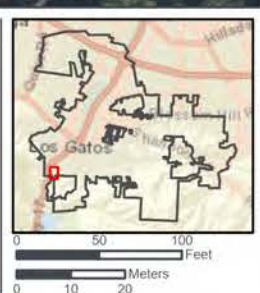




LOS GATOS VEGETATION MANAGEMENT PLAN
Novitiate Park Treatments

- | | | | |
|------------------------------------|--|-----------------------------------|---|
| Novitiate Park (9.93 Acres) | Invasive Species | Ivy, Broom, & Privet (1.16 Acres) | Shaded Fuel Break (1.77 Acres) |
| Midpen Wildfire Resiliency Program | Avena, Star thistle, | Treatment Type | Defensible Space (2.27 Acres) |
| Trail (1,698.16 Feet) | Tree of Heaven, & Non-Native Annual Grassland (5.56 Acres) | Fuel Reduction Area (0.18 Acre) | Woody Slash & Debris Removal (1.29 Acres) |
| | French Broom (0.77 Acre) | Mow / Graze (4.58 Acres) | NHD |
| | Italian Thistle (0.41 Acre) | | Stream/Creek |

Santa Clara County, Ca
 NAD 1983 UTM Zone 10N





LOS GATOS VEGETATION
MANAGEMENT PLAN
**La Rinconada Park
Treatments**

- | | | |
|-----------------------------------|------------------------------------|--|
| La Rinconada Park
(8.64 Acres) | Fuel Reduction Area
(0.80 Acre) | Invasive Species |
| Trail (1,321.83 Feet) | Mow / Graze (0.29
Acre) | Broom, Acacia, and
Privet (0.15 Acre) |
| Treatment Type | Shaded Fuel Break
(6.84 Acres) | Ivy (0.33 Acre) |
| Defensible Space (0.83
Acre) | | NHD |
| | | Stream/Creek |

Santa Clara County, Ca
NAD 1983 UTM Zone 10N

