



State Responsibility Area (SRA)

2025 Five-Year Review

2025 SRA Review

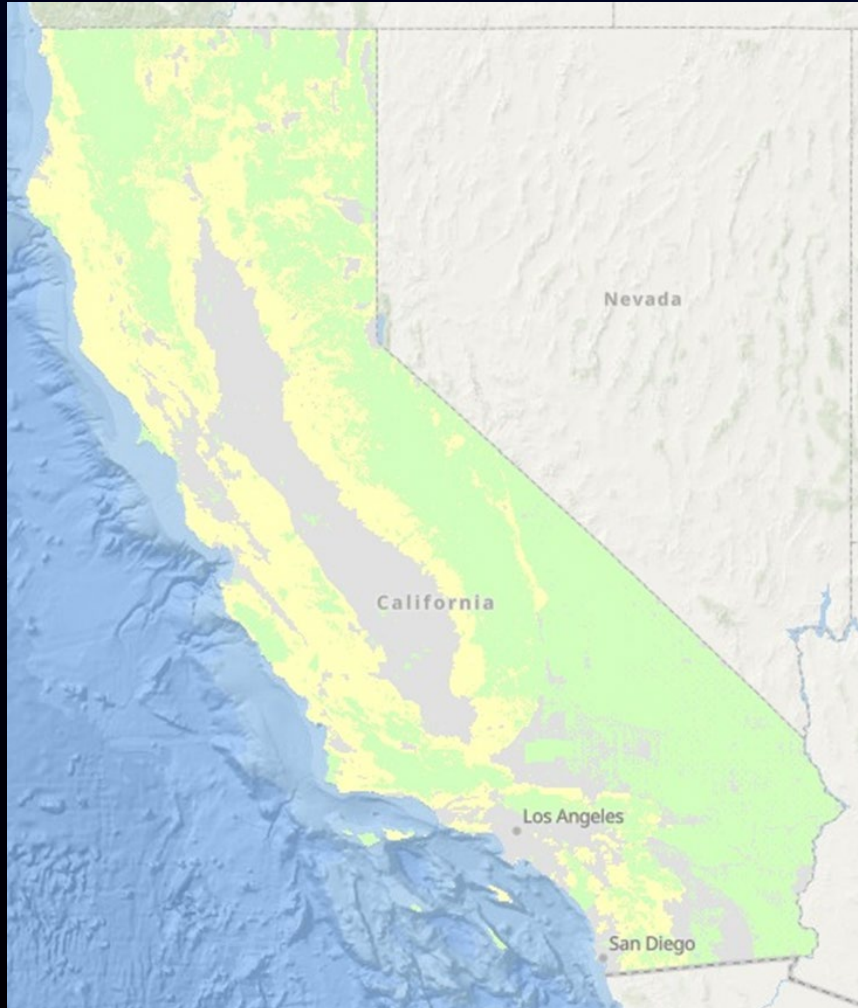


CA Department of Forestry & Fire Protection
Office of the State Fire Marshal
Community Wildfire Preparedness & Mitigation

Emily Smith,
Staff Chief
Wildfire Planning and Statistics

Scott Witt,
Deputy Chief
Pre-Fire Planning

2025 SRA Review



RESPONSIBILITY AREAS

California is divided into areas assigning the financial responsibility of preventing and suppressing fires:

LOCAL = LRA (gray), 1/5 of CA

STATE = SRA (yellow), 1/3 of CA

FEDERAL = FRA (green), 1/2 of CA

The State contains about 100m acres

Legal Basis for SRA



PUBLIC RESOURCES CODE (PRC)

DIVISION 4. FORESTS, FORESTRY AND RANGE AND FORAGE LANDS [4001 - 4958]

PART 2. PROTECTION OF FOREST, RANGE AND FORAGE LANDS [4101 - 4789.7]

CHAPTER 1. Prevention and Control of Forest Fires [4101 - 4205]

ARTICLE 3. Responsibility for Fire Protection [4125 - 4137]

PRC 4125 (Classification...)



- (a) The Board shall classify all lands within the state, without regard to any classification of lands made by or for any federal agency or purpose, for the purpose of determining areas in which the financial responsibility of preventing and suppressing fires is primarily the responsibility of the state...

PRC 4125 (...and Review)



- (b) On or before July 1, 1991, and every 5th year thereafter, the Department shall provide copies of maps identifying the boundaries of lands classified as state responsibility pursuant to subdivision (a) to the county assessor for every county containing any of those lands.
- The Department shall also notify county assessors of any changes to state responsibility areas within the county resulting from periodic boundary modifications approved by the Board.

PRC 4126 (SRA Definition)



- Lands covered wholly or in part by forests or by trees producing or capable of producing forest products.
- Lands covered wholly or in part by timber, brush, undergrowth, or grass, whether of commercial value or not, which protect the soil from excessive erosion, retard runoff of water or accelerate water percolation, if such lands are sources of water which is available for irrigation or for domestic or industrial use.
- Lands in areas which are principally used or useful for range or forage purposes, which are contiguous to the lands described in subdivisions (a) and (b).

PRC 4127 (Exclusions)



The Board shall not include within SRA any of the following lands:

- Lands owned or controlled by the federal government... (FRA).
- Lands within the exterior boundaries of any city... (LRA, incorporated).
- Any other lands within the state which do not come within any of the classes which are described in Section 4126. (LRA, unincorporated)

PRC 4128 (Lines of Convenience)



...the Board may, for purposes of administrative convenience, designate:

- Roads
- Pipelines
- Streams
- or other recognizable landmarks as arbitrary boundaries



Ongoing SRA Review Schedule



- **This is NOT related to Fire Hazard Severity Zones (FHSZ)**
 - FHSZ SRA has concluded, effective 01 April 2024
 - FHSZ LRA remapping is beginning
- FHSZ remapping occurs independently of SRA 5-year reviews
- Next Statewide SRA 5-year review will be in 2030
- Special SRA Reviews are performed as needed
 - Annual “automatic” reviews:
 - Federal ownership changes
 - City Incorporation changes

Goals of SRA Review

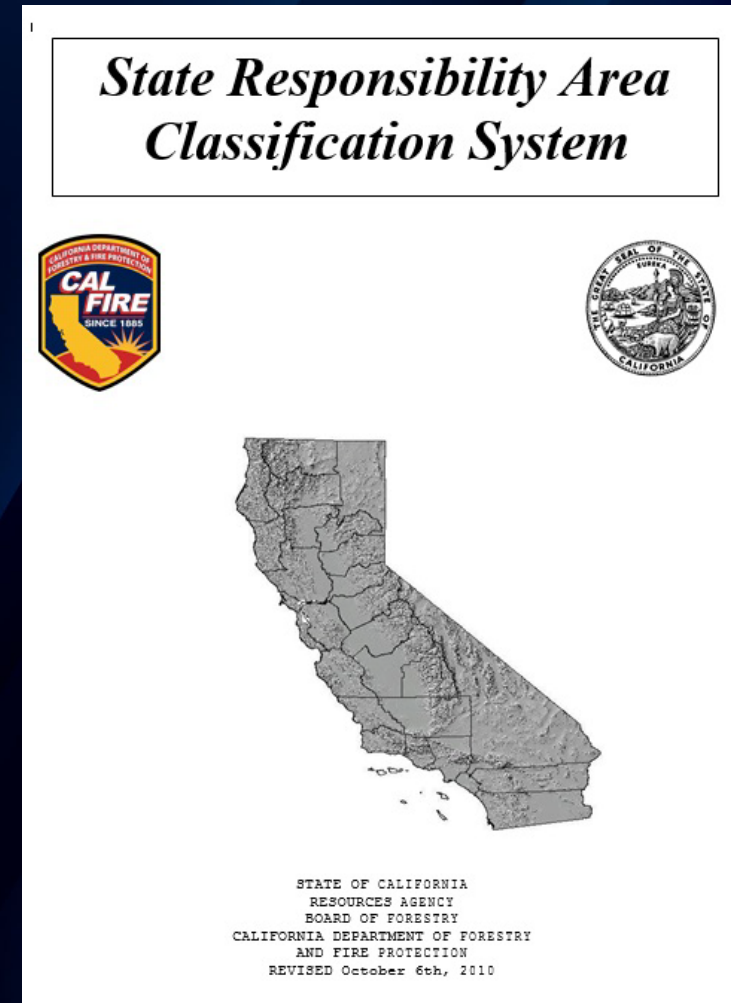


- Statewide consistency in classifying SRA.
- Enable CAL FIRE to respond in a timely manner to land-use changes.
- Sufficient time for local governments to plan for changes in the classification of SRA.
- Public involvement about decisions of classification of SRA.

BOF Classification System



SRA classification follows a specific process using Board guidance, across five distinct levels



What changes are made?



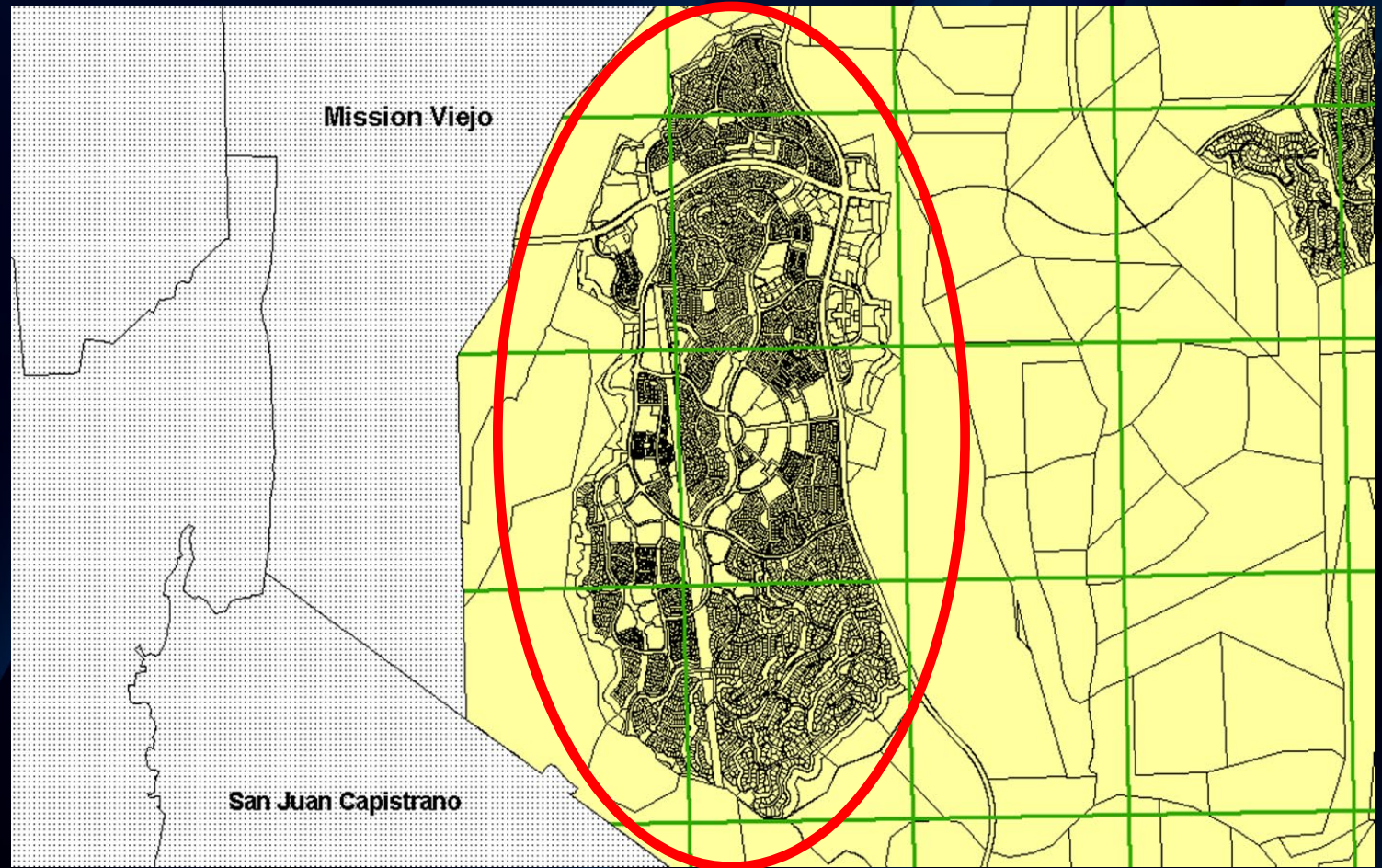
SRA changes can be grouped into 3 categories:

- Cities annexing SRA lands (*automatic*)
- Changes of ownership to and from Federal (*automatic*)
- Land use changes ← / →
 - Development / Densification (generally one-way)
 - Agriculture (back & forth possible)

Development / Densification



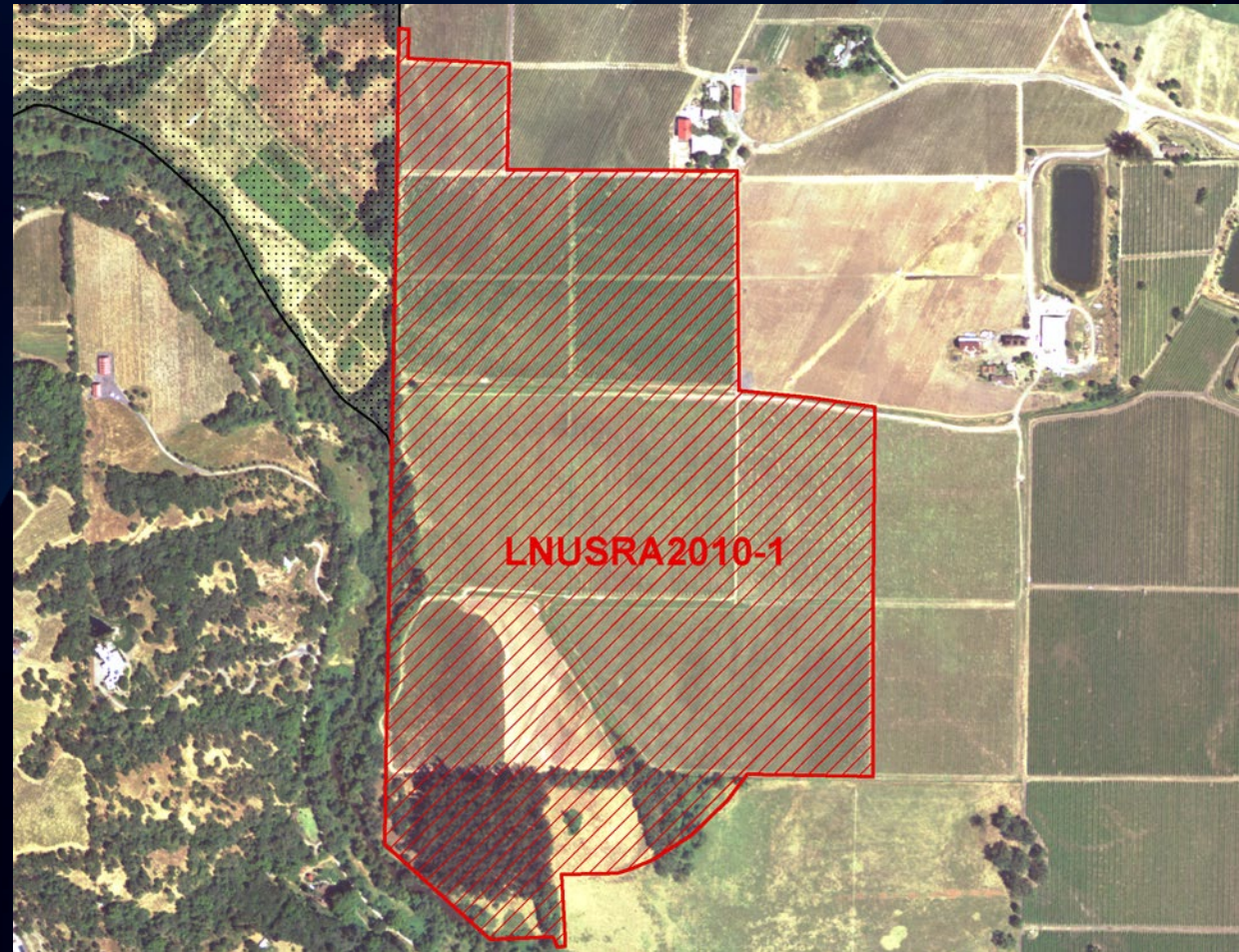
Continuous urbanization averaging more than three residential and/or commercial units per acre over 250 or more acres.



Agricultural



Long term non-flammable crops such as orchards and vineyards which are irrigated and cultivated. (Annuals such as row crops and grain, are not, a long-term modification.)



Levels of SRA Review & Timelines



1. Unit & Contract County review (X)
2. Regional review (X)
3. State review (X)
4. Director's review (X)
5. Board of Forestry review (**Here, now**)
 - Full Board meeting, 22 January 2025
 - Opens 45-day public comment period
 - Public comment @ full Board meeting, 05 March 2025
 - Public comment period closes, 08 March 2025
 - Board action to accept/reject changes, 09 April 2025
 - Effective date, 01 July 2025

Unit / Contract Co. Review (1st)



- When Unit / Contract County staff proposes a SRA to LRA -or- LRA to SRA change, they shall consult with staff from the local fire agencies that will be affected by the change. (**Finished**)

Region Review (2nd)



- The Regional review ensures that the system has been consistently applied at the Unit or Contract County level.
- After completing the review, the Region SRA Coordinator forwards the areas identified for possible reclassification to the State SRA Coordinator. (**Finished**)

State Review (3rd)



- The State Review examines documentation & also conducts on-site inspections as needed.
- The State Review then forwards its recommendations to the Director (**Finished**)

Director Review (4th)



- The Director reviews all proposed changes in classification.
- Those changes that the Director approves are sent to the Board so that public hearings may be scheduled. (**This, now**)
- At this time, the Director notifies affected local government agencies of the proposed changes and their potential impacts. (**Letters have been sent**)

Director Review (4th)



- **Statewide: 67 changes approved & forwarded to the Board**
 - 40,470 acres LRA -> SRA
 - 58,581 acres SRA -> LRA
- **31 changes in North Region**
 - 489 acres LRA -> SRA
 - 29,537 acres SRA -> LRA
- **36 changes in South Region**
 - 39,982 acres LRA -> SRA
 - 29,044 acres SRA -> LRA

Director Review (4th)



- **31 changes in North Region (across 5 CAL FIRE Units)**
 - **AEU - Amador - El Dorado Unit**
 - **CZU - San Mateo - Santa Cruz Unit**
 - **SCU - Santa Clara Unit**
 - **SKU - Siskiyou Unit**
 - **TGU - Tehama - Glenn Unit**

Director Review (4th)



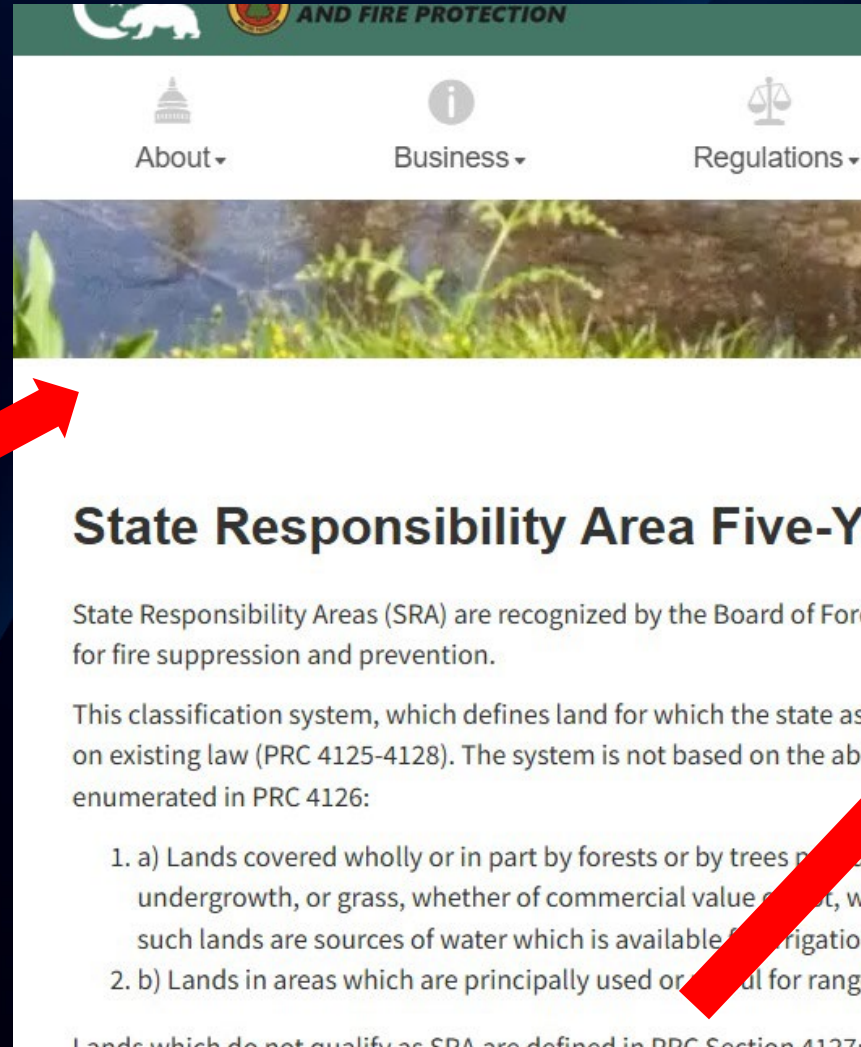
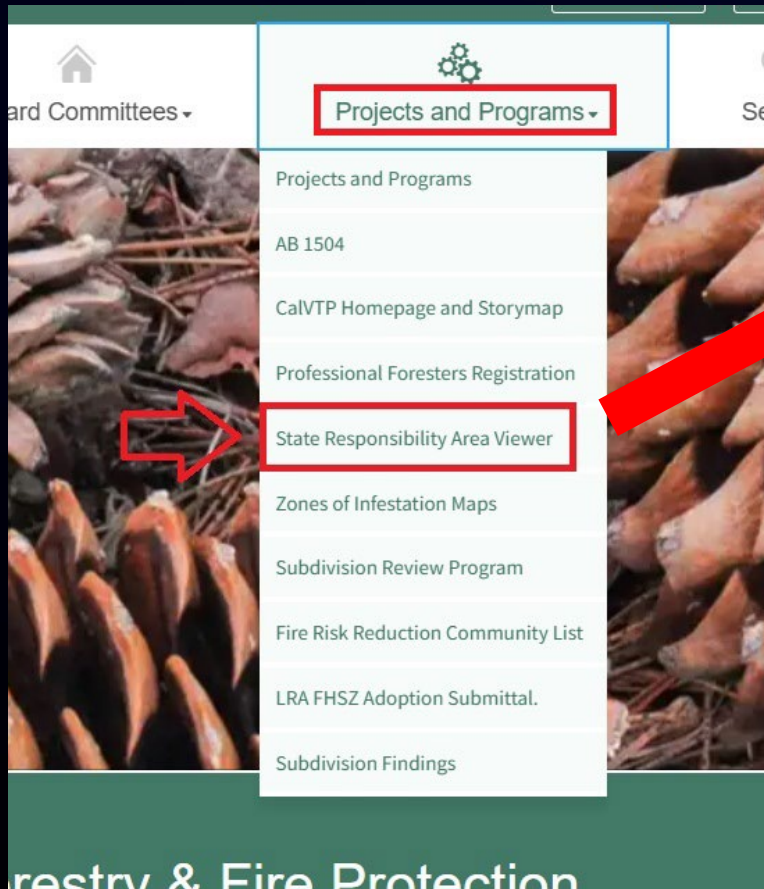
- **36 changes in South Region (across 9 CAL FIRE Units)**
 - **BDU - San Bernardino Unit**
 - **FKU - Fresno - Kings Unit**
 - **KRN - Kern County**
 - **MMU - Madera - Mariposa - Merced Unit**
 - **RRU - Riverside Unit**
 - **SBC - Santa Barbara County**
 - **SLU - San Luis Obispo Unit**
 - **TCU - Tuolumne - Calaveras Unit**
 - **VNC - Ventura County**

Board of Forestry Review (5th)



- Board of Forestry review (**Here, now**)
 - Full Board meeting, 22 January 2025
 - Opens 45-day public comment period
- Public comment @ full Board meeting, 05 March 2025
- Public comment period closes, 09 March 2025
- Board action to accept/reject changes, 09 April 2025
- Effective date, 01 July 2025

BOF Website - SRA Viewer



SRA Viewer

The State Responsibility Area Viewer allows you to view the SRA of the state. It can also be used to search for SRA by address.

Instructions: Enter your complete address in the search box. Use your mouse to move the location of the SRA on the map.

Legend: Lands shaded by a yellow overlay are SRA.

[Click Here to launch SRA Viewer](#)

Public Comment



- Now open
- **This is NOT related to Fire Hazard Severity Zones (FHSZ)**
 - FHSZ SRA & FHSZ LRA are separate from SRA 5-year review
 - FHSZ SRA has concluded; FHSZ LRA is beginning
- Comments may be sent via email or postal mail; only one method of submission is necessary.

Email: publiccomments@bof.ca.gov

Postal: Board of Forestry and Fire Protection
P.O. Box 944246
Sacramento, CA 94244

2025 SRA Review



Questions?

