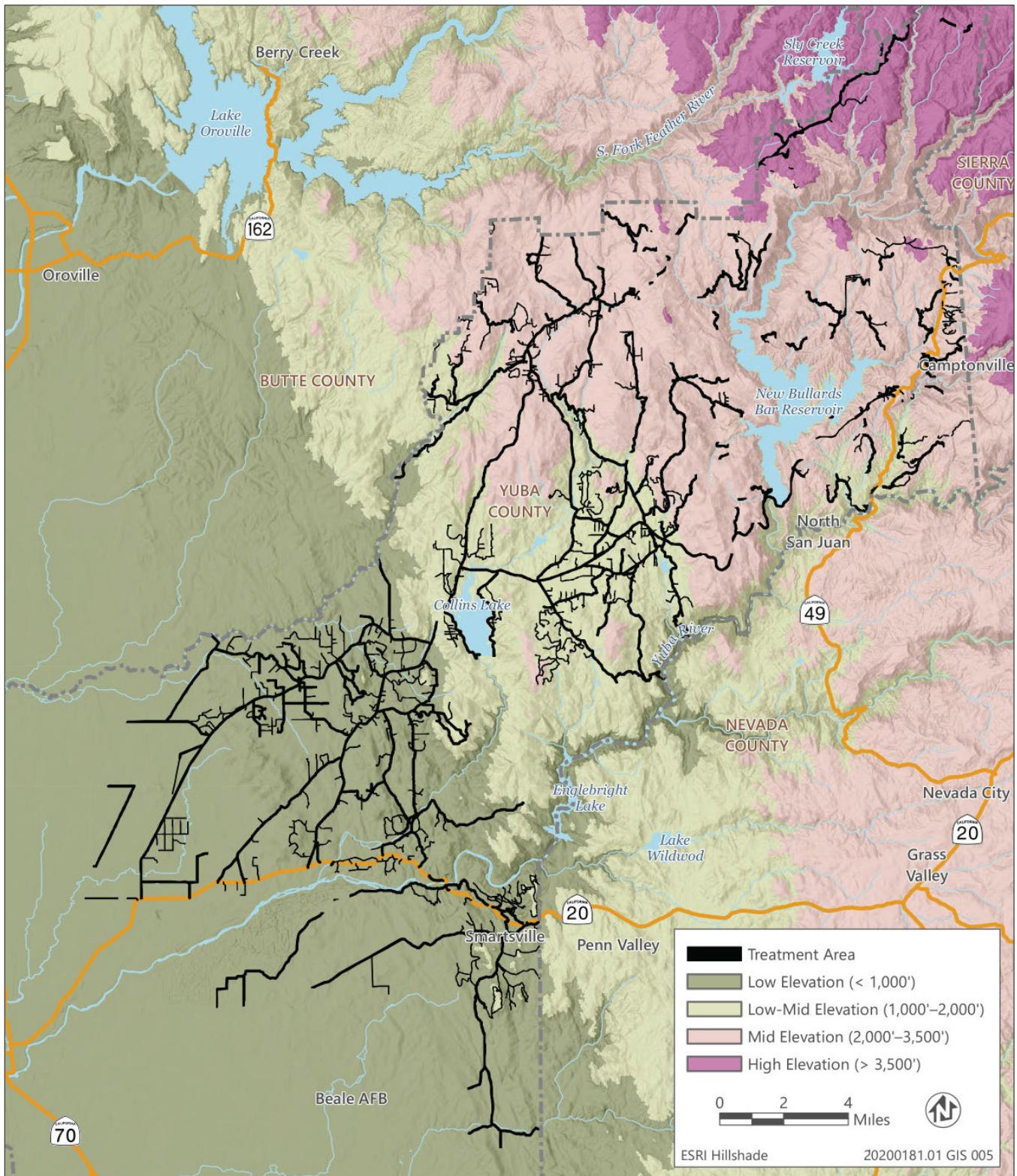


Elevational Zones for Special-Status Plant Species that are Known to Occur or May Occur within Yuba Roadside Fuel Treatment Project Area



Purpose: This example table from the Yuba Roadside Fuel Treatment Project shows how elevational zones may be used to aid in implementation of special-status plant measures on projects that occur across a large elevation range.



Yuba Roadside Fuel Treatment Project Elevation Zones

Elevation Zone ¹	Annual	Geophyte (e.g., perennial rhizomatous herb)	Perennial
Low Elevation (< 1,000')	<ul style="list-style-type: none"> ◆ Ferris' milk-vetch ◆ Mildred's clarkia ◆ Mosquin's clarkia ◆ Dwarf downingia ◆ Ahart's dwarf rush ◆ Legenere ◆ Veiny monardella 	<ul style="list-style-type: none"> ◆ Stebbins' morning-glory ◆ Dissected-leaved toothwort ◆ Inundated bog-clubmoss ◆ Sanford's arrowhead 	<ul style="list-style-type: none"> ◆ Chaparral sedge ◆ Recurved larkspur ◆ Ahart's buckwheat ◆ Minute pocket moss ◆ Layne's ragwort ◆ Brownish beaked-rush ◆ Cylindrical trichodon ◆ Brazilian watermeal
Low-Mid Elevation (1,000'–2,000')	<ul style="list-style-type: none"> ◆ Mildred's clarkia ◆ Mosquin's clarkia ◆ Dwarf downingia ◆ Fern-leaved monkeyflower ◆ Legenere ◆ Veiny monardella 	<ul style="list-style-type: none"> ◆ Stebbins' morning-glory ◆ Dissected-leaved toothwort ◆ Inundated bog-clubmoss ◆ Sierra blue grass ◆ Sanford's arrowhead 	<ul style="list-style-type: none"> ◆ Sierra arching sedge ◆ Chaparral sedge ◆ Recurved larkspur ◆ Clifton's Eremogone ◆ Ahart's buckwheat ◆ Minute pocket moss ◆ Pine Hill flannelbush ◆ Cantelow's lewisia ◆ Layne's ragwort ◆ Brownish beaked-rush ◆ Cylindrical trichodon
Mid Elevation (2,000'–3,500')	<ul style="list-style-type: none"> ◆ Mildred's clarkia ◆ Mosquin's clarkia ◆ Fern-leaved monkeyflower ◆ Legenere 	<ul style="list-style-type: none"> ◆ Stebbins' morning-glory ◆ Dissected-leaved toothwort ◆ Inundated bog-clubmoss ◆ Sierra blue grass ◆ Sanford's arrowhead 	<ul style="list-style-type: none"> ◆ Constance's rockcress ◆ Buxbaumia moss ◆ Sierra arching sedge ◆ Chaparral sedge ◆ Recurved larkspur ◆ Clifton's Eremogone ◆ Ahart's buckwheat ◆ Minute pocket moss ◆ Caribou coffeeberry ◆ Pine Hill flannelbush ◆ Cantelow's lewisia ◆ Layne's ragwort ◆ Flexuose threadmoss ◆ Sticky Pyrrocoma ◆ Brownish beaked-rush ◆ Cylindrical trichodon
High Elevation (> 3,500')	<ul style="list-style-type: none"> ◆ Mildred's clarkia ◆ Mosquin's clarkia ◆ Fern-leaved monkeyflower 	<ul style="list-style-type: none"> ◆ Upswept moonwort ◆ Mingan moonwort ◆ Western goblin ◆ Inundated bog-clubmoss ◆ Sierra blue grass 	<ul style="list-style-type: none"> ◆ Constance's rockcress ◆ Buxbaumia moss ◆ Sierra arching sedge ◆ Clifton's Eremogone ◆ Plumas rayless daisy ◆ Ahart's buckwheat ◆ Caribou coffeeberry ◆ Cantelow's lewisia ◆ Layne's ragwort ◆ Sticky pyrrocoma ◆ Brownish beaked-rush ◆ Cylindrical trichodon

¹ Elevation zones are intended to provide a rough guide regarding plant species distribution in Yuba County. Final determinations regarding species with potential to occur in a treatment area should be verified by a qualified RPF or biologist.