

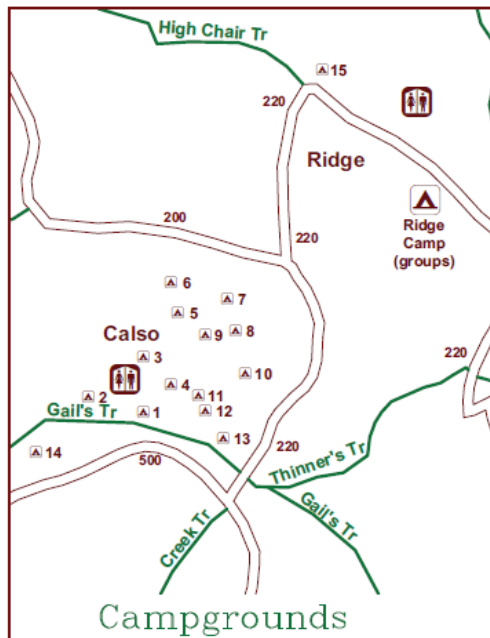
## Demonstration State Forest Public Campground Overview

Forest	# of Camping Areas (Excluding Group Sites)	# of Campsites
Boggs Mountain	1	14
Jackson	22	64
Mountain Home	5	96

### ***Boggs Mountain***

Calso Camp is Boggs Mountain's only non-group campground. It has a total of 14 campsites and one shared pit toilet. Historic campground use was moderate with most use on weekends.

The figure below is the pre-Valley Fire campground map from the 2012 brochure.



### ***Jackson***

Jackson operates 22 general-use campgrounds with 1-17 campsites each, with 64 total campsites. The sites are in two general areas: Camp 1 and Camp 20. The campsites are rustic with most providing a toilet facility but no potable water. Campground usage is high during Memorial Day and summer weekends through the start of school. Most usage occurs on weekends.

A campground map can be viewed below or at the [Jackson Campground Map Link](#):

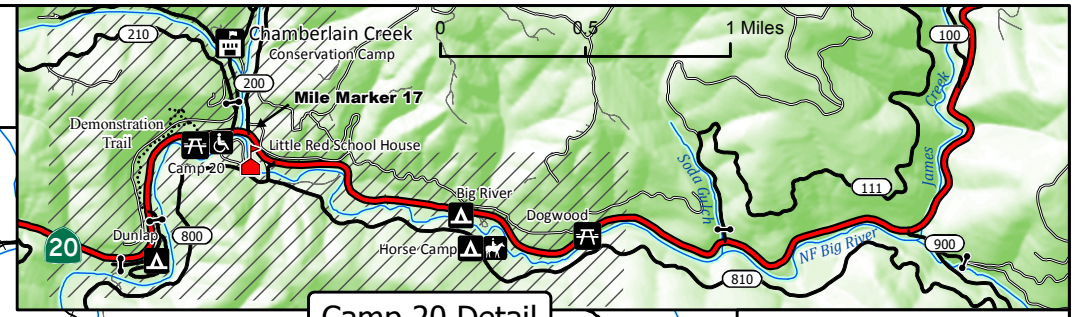


All visitors are responsible for knowing State Forest regulations and fees. Contact office for information.



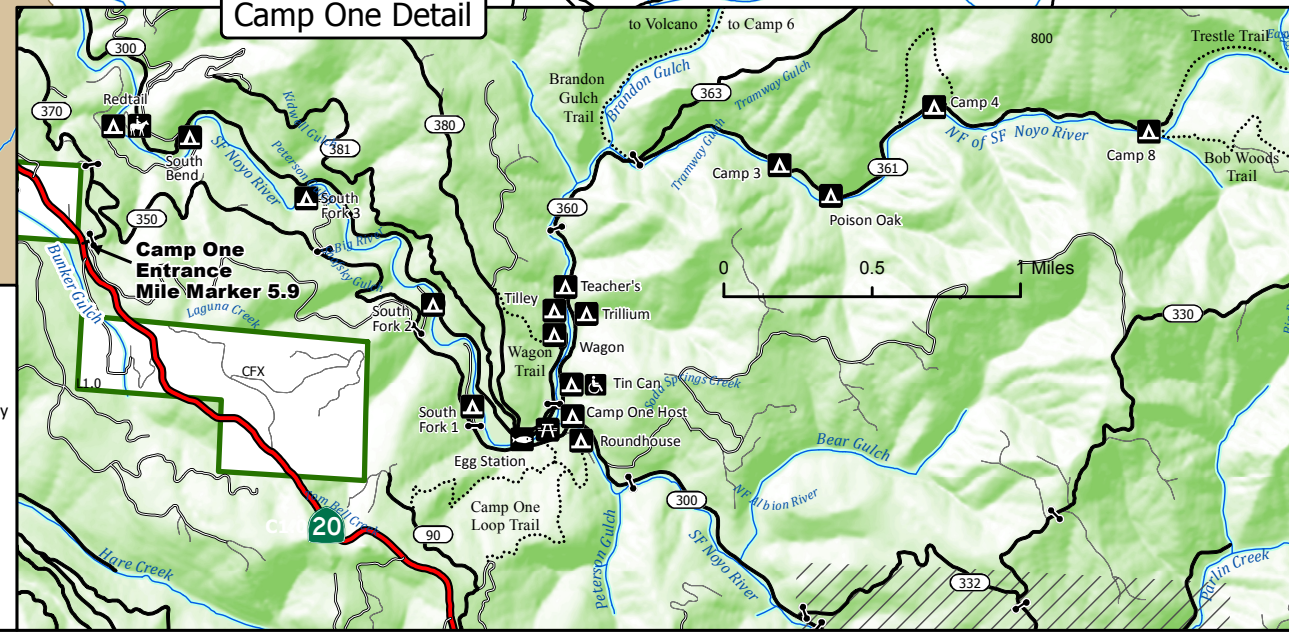
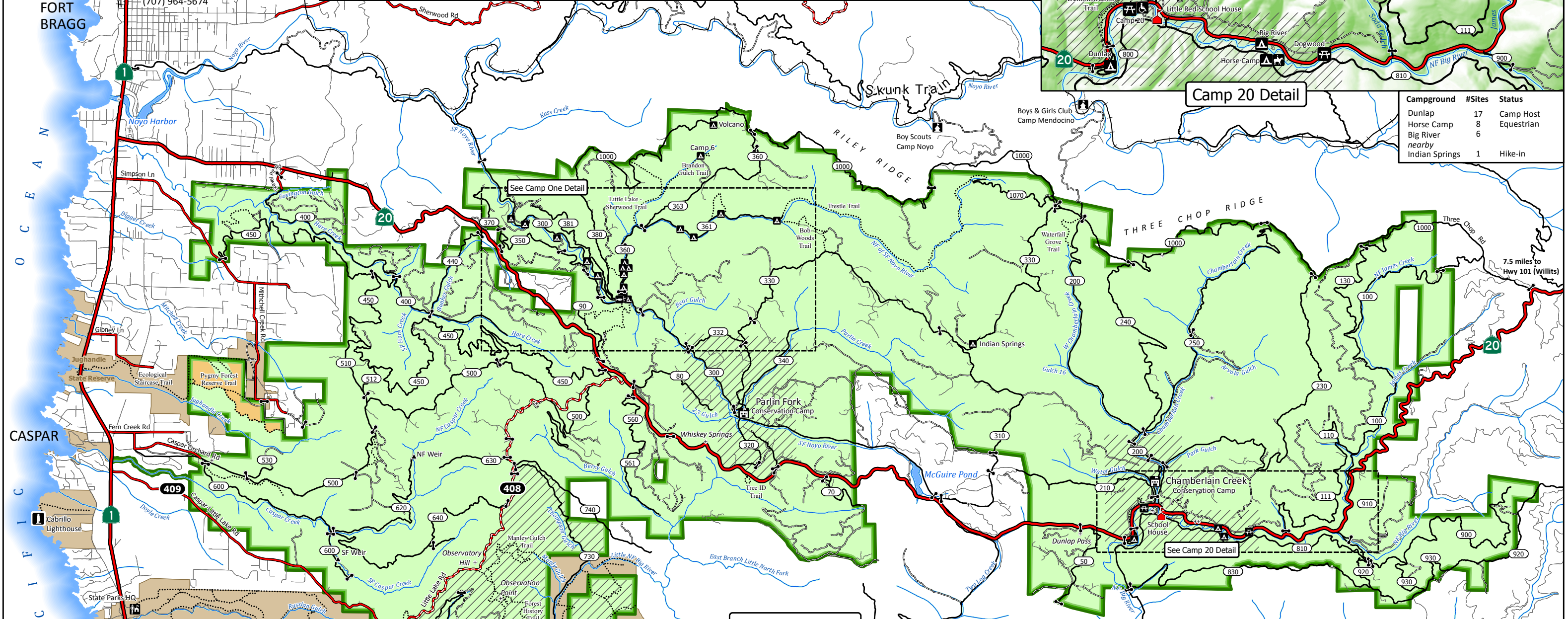
# JACKSON DEMONSTRATION STATE FOREST

CALIFORNIA DEPARTMENT OF FORESTRY AND FIRE PROTECTION - MENDOCINO UNIT



Camp 20 Detail

Campground	#Sites	Status
Dunlap	17	Camp Host
Horse Camp	8	Equestrian
Big River	6	
nearby Indian Springs	1	Hike-in



Camp One Detail

Campground	#Sites	Status
Redtail	10	Equestrian
Wagon	5	
Roundhouse	3	
Tin Can	2	Wheelchair Access
Camp 3	1	Self-Contained Vehicle Only
Camp 4, 8	1	
Poison Oak	1	
South Bend	1	
South Fork 1-3	1	
Teacher's	1	
Tilley	1	Large Groups
Trillium	1	
nearby Camp 6	1	Hike-in, No Outhouse
Volcano	1	Hike-in

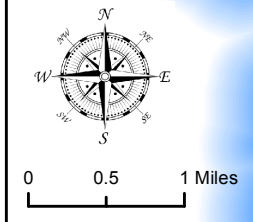
**Legend:**

- State Highway
- Notable County Rd (road dashed where not paved)
- Primary Forest Rd
- Secondary Rd
- Other Rd
- Trail
- Stream
- State Parks
- Pygmy Reserve
- State Forest
- Area closed to the use of fire arms

**Icons:**

- Historic School House
- CAL FIRE Station
- Campground (Fee Required)
- Day Use
- Horses Allowed
- Conservation Camp
- Wheelchair Access
- Egg Station
- Other Camp
- Caspar Weir
- Locked Gate
- No Public Vehicles

JDSF ROADS: are subject to closures  
 GATES: other gates not displayed may be locked for public safety or natural resource protection  
 CAMPGROUNDS: are all seasonal, have no potable water and include access to outhouse, picnic table, and fire ring unless otherwise noted.



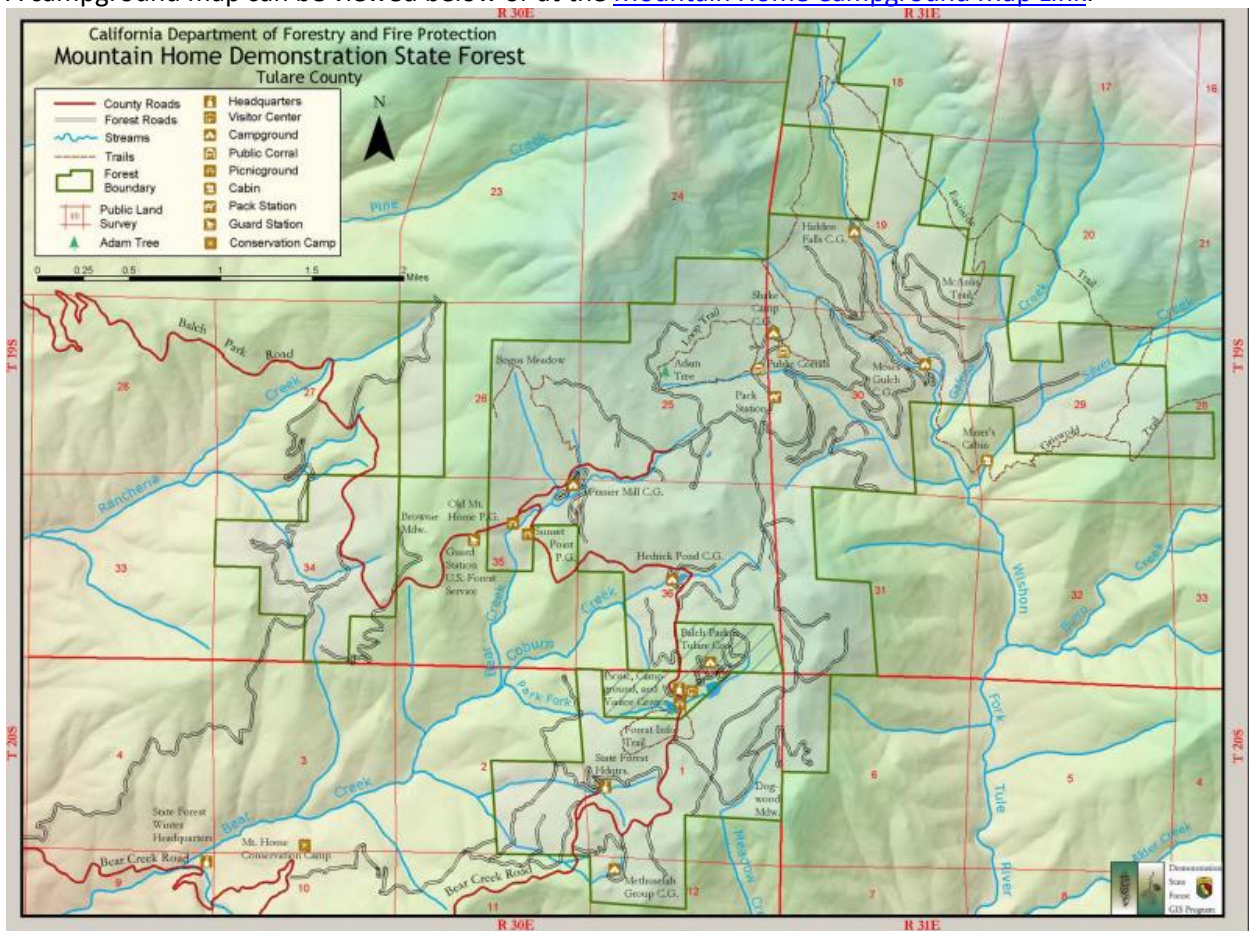
Map Date: 1/20/2015  
 Created for paper size: 11"x17"  
 By: Shawn Headley (JDSF)



## Mountain Home

There are five (5) general-use campgrounds with 8-49 campsites each, with 96 total campsites. Each campground provides vault toilets, potable water, and an RV pad and water hook-up for a camp host. Campground usage is high from Memorial Day through October when temperatures start to fall. Most usage occurs on weekends; it is not unusual for the campgrounds to be at capacity over summer weekends.

A campground map can be viewed below or at the [Mountain Home Campground Map Link](#):



## Discussion of Cost Differential for Mountain Home

Increased costs for campground operation at Mountain Home is primarily tied to the density of the recreation, high occupancy rates of campsites, and maintenance of the potable water system. Frequent maintenance of the toilets, garbage, and facilities is required to maintain the campground to program standards due to the high density of campsites per campground. The high number of user days per campsite due to high occupancy rates has similar impacts to the required maintenance schedule. The potable water system requires opening each season after the snow melt, closing at the end of each season, and water quality monitoring samples periodically through the year. This increased use brings additional revenue, but campsite fees do not cover the cost of operating the camping program. Due to that, the increased use leads to an increased net loss. Charging the proposed \$30 per night campsite fee will help minimize the net loss. This will also bring the Mountain Home campsite fee on par with the adjacent Balch Park Campground operated by the County of Tulare. The

additional \$5 premium over the proposed fees at Jackson and Boggs is justified by the increased costs discussed above, the potable water system available to campers, and a camp host to enhance the visitor experience.