

2. GOALS AND POLICIES

HEALTH AND SAFETY

PART 2: GOALS AND POLICIES

HEALTH AND SAFETY ELEMENT

Planning for growth and development requires the consideration of a wide range of public safety issues. Safety hazards are naturally induced, such as seismic and geologic hazards, flooding, and wildland fire hazards. Some hazards are the result of natural hazards that are exacerbated by human activity and alteration of the natural environment, such as dam failure, wildland and urban fires, and development in sensitive areas such as floodplains and fire hazard zones or areas subject to erosion and landslides. Some hazards are manmade, including aircraft crash hazards, hazardous materials discharge exposure, poor/unhealthy air quality, and criminal activity. Changing conditions occurring in our climate are contributing to more extreme weather, which create hazardous conditions associated with extreme heat days, lengthening periods of drought, and precipitation extremes. In addition to safety issues related to hazardous conditions, the planning process should account for other issues related to community health and safety, such as noise exposure.

On December 1, 2009, the Fresno County Board of Supervisors approved Resolution No. 09-503 to adopt the Fresno County Multi-Jurisdictional Hazard Mitigation Plan (LHMP). The Multi-Hazard Mitigation Plan was developed by several County departments, cities, and special districts with oversight from the Fresno County Office of Emergency Services. The Plan was prepared pursuant to the requirements of the Disaster Mitigation Act of 2000. A Federally-approved hazard mitigation plan enables the County to apply for Federal pre-disaster hazard mitigation grant funds to support mitigation projects. The Plan (Resolution No. 09-503), originally approved by FEMA on January 9, 2009, is incorporated by reference into the Health and Safety Element of the General Plan below. The Plan incorporates a process where hazards are identified and profiled, the people and facilities at risk are analyzed, and mitigation actions are developed to reduce or eliminate hazard risk. The implementation of these mitigation actions, which include both short and long-term strategies, involve planning, policy changes, programs, projects, and other activities. Since its approval, the LHMP has been periodically updated to address change in circumstance, new information or hazards, changes in state law, or the changing needs of the County. As a dynamic document, the LHMP will continue to be incorporated by reference as an important part of the Health and Safety Element of the General Plan. The LHMP

(<https://www.co.fresno.ca.us/home/showpublisheddocument/35154/636958419636600000>) can be found on the County of Fresno Office of Emergency Services page

(<https://www.co.fresno.ca.us/departments/public-health/office-of-emergency-services-oes>). Many of the health and safety risks associated with development can be avoided through locational decisions made at the planning stages of development, while others may be lessened through the use of mitigation measures in the planning and land use regulation process. This element, in conjunction with the Fresno County Multi-Jurisdictional Local Hazard Mitigation Plan, sets out goals and policies for ensuring the maintenance of a healthy and safe physical environment. Specific implementation programs related to Health and Safety Element Goals and Policies can be found in Part 3 of this General Plan.

CLIMATE CHANGE

All communities in California will feel the effects of climate change over the next century. As required by State law, Fresno County completed a local climate change vulnerability assessment which evaluates how



FRESNO COUNTY GENERAL PLAN

climate change may impact key community members, natural resources, agriculture, critical facilities, buildings, services, and infrastructure in unincorporated Fresno County.

Climate change adaptation and resilience goals, policies, and implementation programs to address the identified vulnerabilities are provided in this Element of the General Plan. The Fresno County Climate Change Vulnerability Assessment identified and mapped communities most at risk to climate change hazards in unincorporated Fresno County (see Figure 19 Social Sensitivity in Fresno County in Appendix C). The Health and Safety Element refers to groups that are most sensitive to climate change hazards as vulnerable populations. Vulnerable populations in Fresno County are listed below:

- Low Income
- People experiencing homelessness
- Undocumented immigrants
- Unemployed
- Older adults
- Children
- Military Veterans
- Non-white Communities
- Renters
- Outdoor Workers
- Single female heads of households with kids
- Linguistically Isolated
- American Native and Alaskan Native
- Individuals with disabilities
- Individuals with Asthma
- Individuals with Cardiovascular Disease
- Isolated Individuals
- Individuals with no health insurance
- Individuals with educational attainment less than four years of college
- Pollution Burdened Individuals
- Households without a computer
- Households without broadband internet

See Appendix C, for a detailed description of population groups considered vulnerable and adaptive capacity in the County.

NEIGHBORHOOD ACCESS

Wildfires, flooding, and other hazards can isolate areas of the county by impeding access from emergency services and egress for residents thus creating severe health and safety risks. State law requires identification of neighborhoods that have fewer than two emergency evacuation routes. In unincorporated Fresno County, there are 31 neighborhoods with 25 or more dwelling units that do not have at least two emergency evacuation routes. In addition, the County identified six Disadvantaged Unincorporated Communities with fewer than 25 dwelling units that have limited emergency evacuation access. Disadvantaged Unincorporated Communities are settled places not within city limits where the median household income is 80 percent or less than the statewide median household income (it should be noted that Disadvantaged Unincorporated Communities are a distinct classification from disadvantaged communities, which are described in the Environmental Justice Element). Through coordination with local and state fire law enforcement agencies, the County has identified, and inventoried existing residential developments located within identified hazard areas that do not have at least two identified emergency evacuation routes. The locations of neighborhoods with fewer than two emergency evacuation routes and existing subdivisions with more than 30 dwelling units, as identified by the California Board of Forestry and Fire Protection and the State Fire Marshall as part of the Subdivision Review Program (formed because of Assembly Bill 2911), in unincorporated Fresno County can be found in Figure HS-1,

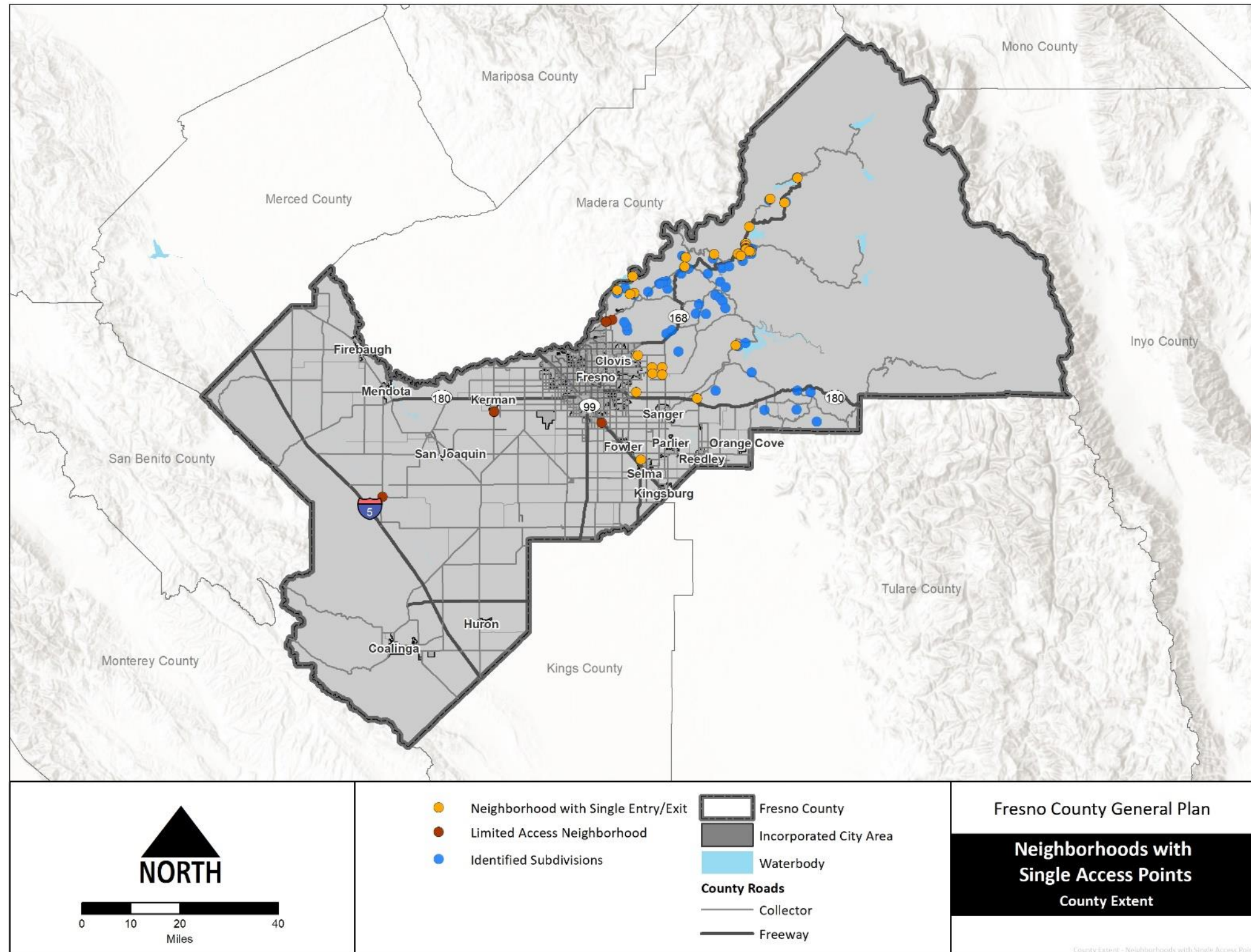
2. GOALS AND POLICIES HEALTH AND SAFETY

Figure HS-2, Figure HS-3, and Figure HS-4 below, and in Appendix D which provides more detailed mapping.



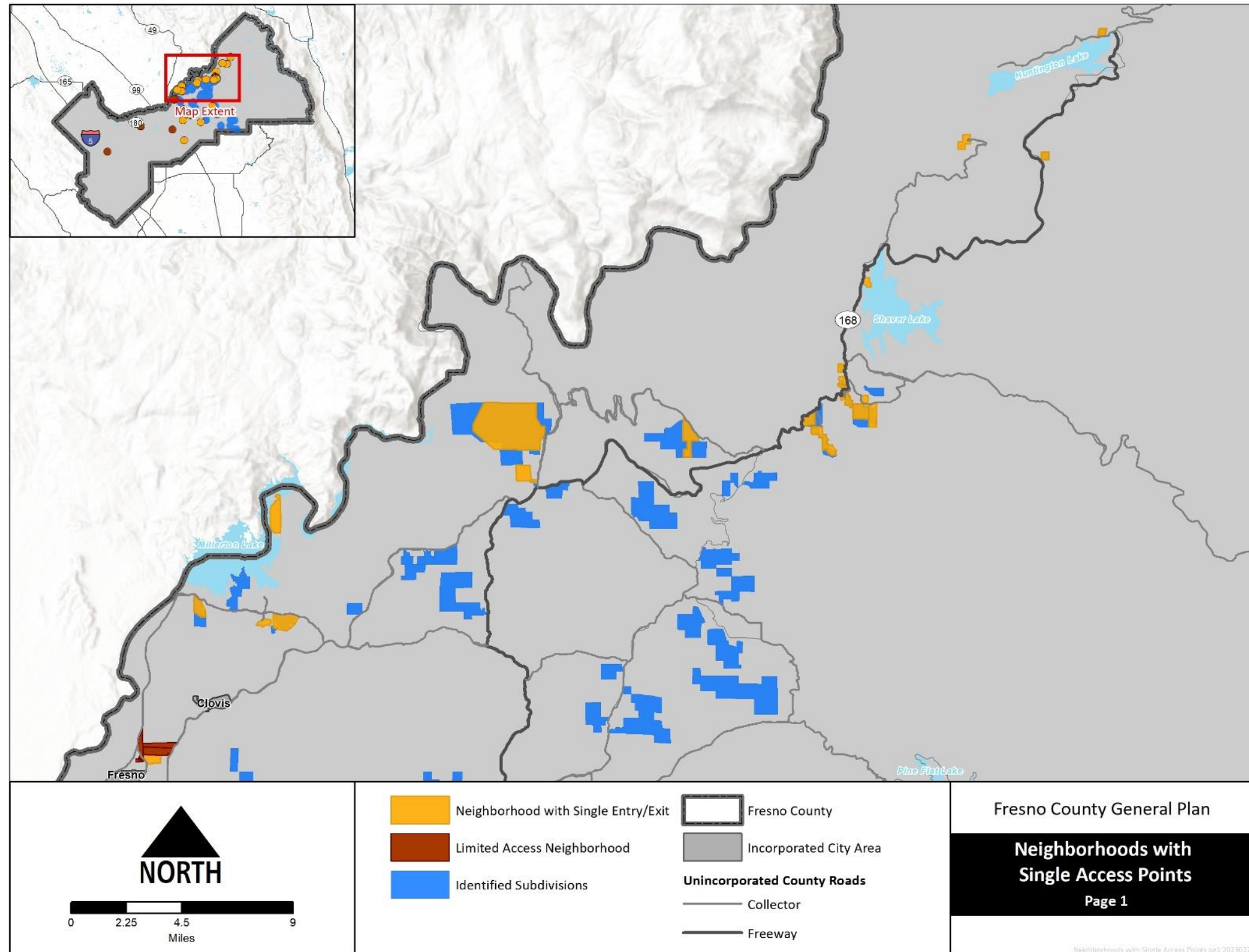
FRESNO COUNTY GENERAL PLAN

Figure HS-1 Neighborhoods with Single Access Points (County Extent)



2. GOALS AND POLICIES HEALTH AND SAFETY

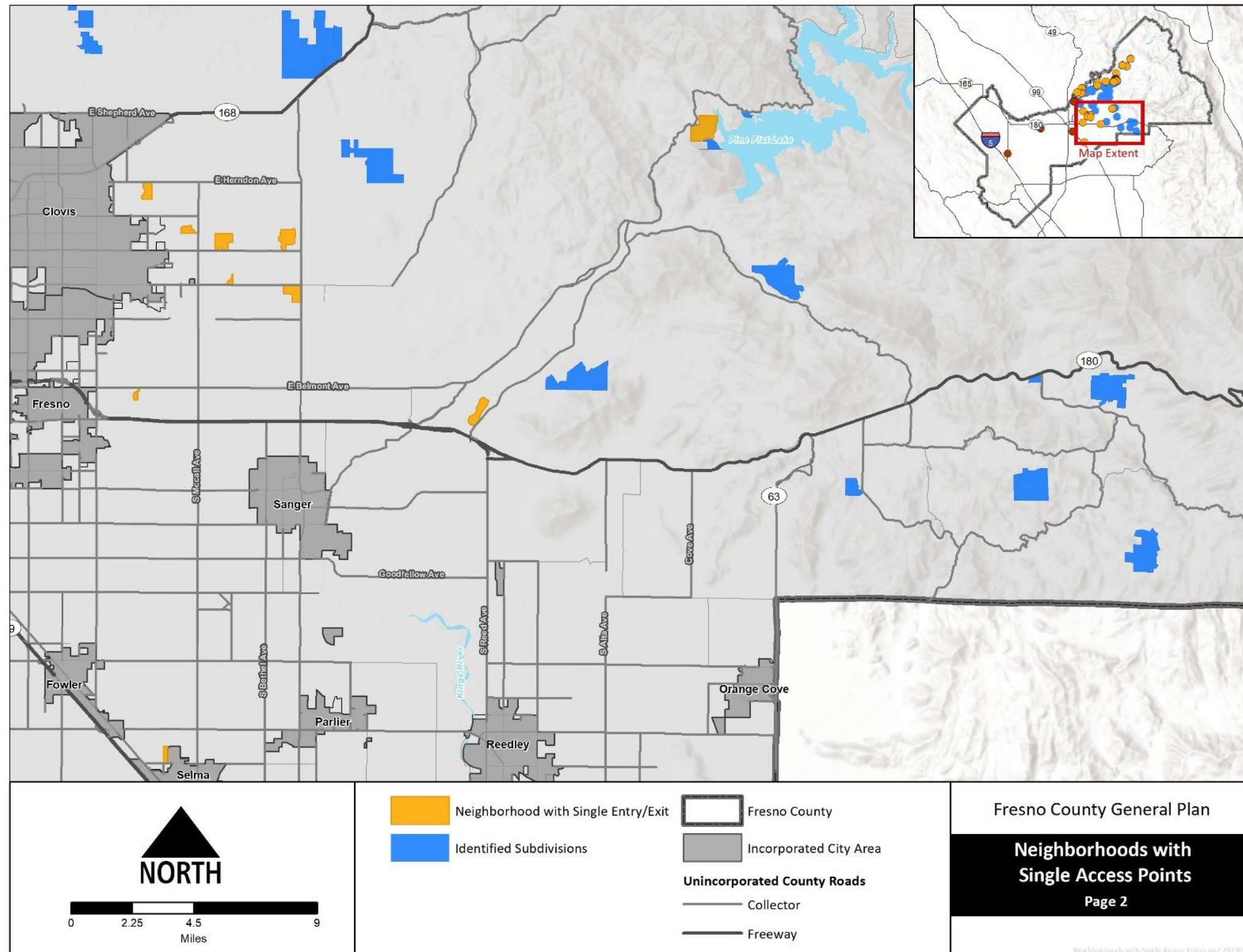
Figure HS-2 Neighborhoods with Single Access Points (Page 1)





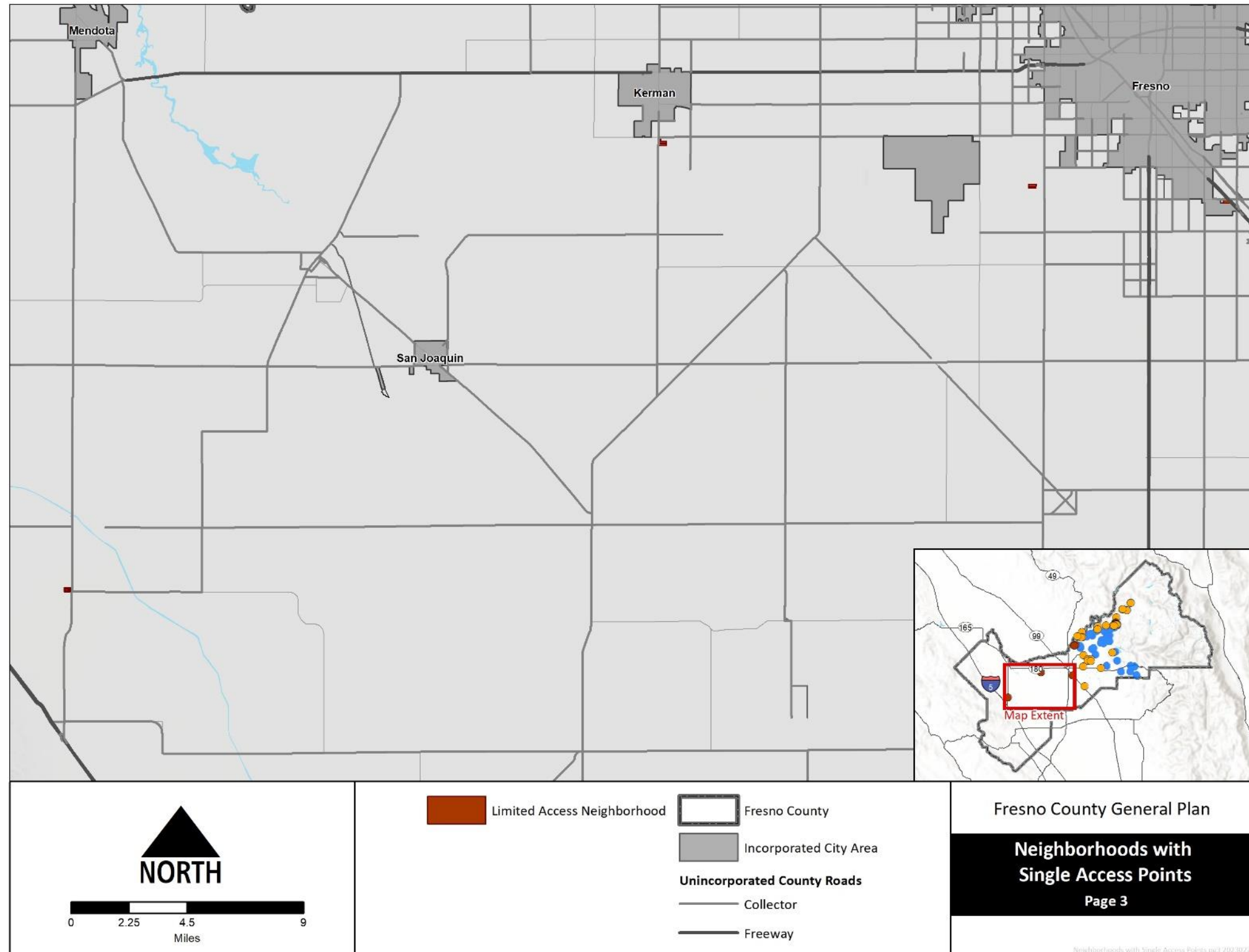
FRESNO COUNTY GENERAL PLAN

Figure HS-3 Neighborhoods with Single Access Points (Page 2)



2. GOALS AND POLICIES HEALTH AND SAFETY

Figure HS-4 Neighborhoods with Single Access Points (Page 3)





FRESNO COUNTY GENERAL PLAN

CLIMATE ADAPTATION

The purpose of the Health and Safety Element is to prepare for, reduce, or eliminate long-term risk to people and property from hazards. State law requires that upon the next revision, beginning January 1, 2017, of the local hazard mitigation plan, the safety element is to be updated as necessary to address climate adaptation and resiliency strategies applicable to the County. Fresno County’s most recent Multi-Jurisdictional Hazard Mitigation Plan was updated in May 2018, which triggered the requirement to address climate adaptation and resiliency in the Health and Safety Element. Many policies that address health and safety risks for residents living in County are already present in other elements of the General Plan. Table HS-1 below provides a list of these policies. The goals, policies, and implementation programs in the Health and Safety Element aim to fill the gaps and ensure the General Plan fully addresses the needs of residents in the County.

**TABLE HS-1
Policies in Other Elements Addressing
Adaptation and Resiliency**

Agriculture and Land Use Element	
AGRICULTURE	
Policy LU-A.13	Agricultural Buffers
Policy LU-A.14	Agricultural Land Conversion Review
Policy LU-A.20	Water Resources
Policy LU-A.21	Public Education Programs
Policy LU-A.22	Drought Impacts
WESTSIDE RANGELANDS	
Policy LU-B.12	Discretionary Project Preliminary Soils Report
RIVER INFLUENCE AREAS	
Policy LU-C.7	Floodplain Development
NONAGRICULTURAL RURAL DEVELOPMENT	
Policy LU-E.6	Planned Residential Development Conditions
Policy LU-E.8	Rural Residential Northeast of the Enterprise Canal
Policy LU-E.10	Onsite Water and Sewer Systems
Policy LU-E.11	Surface Water Entitlements
Policy LU-E.12	Natural Water Channel Protection
Policy LU-E.22	Quail Lakes Planned Rural Community
Public Services and Facilities Element	
WATER SUPPLY AND DELIVERY	
Policy PF-C.1	Retain Existing Water Supplies
Policy PF-C.2	Import Surplus Water
Policy PF-C.3	Surface Water Use
Policy PF-C.4	Water Storage
Policy PF-C.5	Water Banking
Policy PF-C.6	Urban Best Management Practices
Policy PF-C.7	Infrastructure Planning for Water
Policy PF-C.8	Preserve Local Water Rights/Supply
Policy PF-C.10	Ongoing Water Supply
Policy PF-C.11	Adequate Sustainable Water Supply
Policy PF-C.12	Limited Ground Water
Policy PF-C.13	Water Quality Standards
Policy PF-C.15	Water Demand Impact Mitigations
Policy PF-C.16	Water Supply Evaluation
Policy PF-C.17	Surface Water Entitlement
Policy PF-C.21	Agriculture Surface Water

2. GOALS AND POLICIES

HEALTH AND SAFETY

TABLE HS-1
Policies in Other Elements Addressing
Adaptation and Resiliency

Policy PF-C.22	Out-of-County Groundwater Transfers
Policy PF-C.23	Water Conservation Technologies
Policy PF-C.24	Reclaimed Water
Policy PF-C.25	Integrated Regional Water Management Planning
Policy PF-C.26	Agricultural Water Conservation
Policy PF-C.27	Tiered Water Pricing
Policy PF-C.28	Man-made Lakes and Ponds
STORM DRAINAGE AND FLOOD CONTROL	
Policy PF-E.1	Flood Control Coordination
Policy PF-E.2	Multi-use Flood Control Facilities
Policy PF-E.3	Equitable Flood Control Costs
Policy PF-E.4	Storm Drainage System Capacity
Policy PF-E.5	Impacts to Flood Control Facilities
Policy PF-E.6	Drainage Facility Construction
Policy PF-E.7	Fair-share of Cost
Policy PF-E.8	Locating Drainage Facilities
Policy PF-E.9	100-year Flood Protection
Policy PF-E.10	Drainage Facility Design
Policy PF-E.11	Natural Site Drainage Patterns
Policy PF-E.12	Drainage System Discharge Standards
Policy PF-E.13	Natural Storm Water Drainage Systems
Policy PF-E.14	Retention-Recharge Basins
Policy PF-E.15	Basin Landscaping and Open Space
Policy PF-E.16	Minimal Sedimentation and Erosion
Policy PF-E.17	Groundwater Recharge
Policy PF-E.18	Minimum Number of Basins
Policy PF-E.19	Major Courses for Drainage Discharges
Policy PF-E.20	Storm Water Drainage Discharges
Policy PF-E.21	Best Management Practices
Policy PF-E.22	Odor and Vector Control
FIRE PROTECTION AND EMERGENCY MEDICAL SERVICES	
Policy PF-H.1	Provision of Fire/Emergency Medical Service
Policy PF-H.2	Adequate Fire Protection Facilities
Policy PF-H.3	Fire Station Location
Policy PF-H.4	Fire and Emergency Medical Sites
Policy PF-H.5	Minimize Fire Hazard Risk
Policy PF-H.6	Long Response Areas
Policy PF-H.7	Fire Protection Standards
Policy PF-H.8	Minimum Response Time
Policy PF-H.10	California Fire Code
Public Services and Facilities Element	
WATER RESOURCES	
Policy OS-A.1	Water Resource Management Leadership
Policy OS-A.2	Groundwater Management Leadership
Policy OS-A.4	Water Conservation and Quality Awareness
Policy OS-A.5	Groundwater Recharge
Policy OS-A.6	Groundwater Recharge Protection
Policy OS-A.7	Groundwater Recharge Areas
Policy OS-A.8	Groundwater Recharge Sites Inventory
Policy OS-A.9	Water Banking
Policy OS-A.10	Sustainable Groundwater Management
Policy OS-A.11	Over-irrigation of Surface Water



FRESNO COUNTY GENERAL PLAN

**TABLE HS-1
Policies in Other Elements Addressing
Adaptation and Resiliency**

Policy OS-A.12	Aquifer Recharge Program
Policy OS-A.14	Floodplain Protection
Policy OS-A.15	San Joaquin River Protection
Policy OS-A.16	Multi-use Public Lands
WETLAND AND RIPARIAN AREAS	
Policy OS-D.1	No-Net-Loss Wetlands Policy
Policy OS-D.2	Wetlands Loss Mitigation
Policy OS-D.3	Adjacent Wetland Protection
Policy OS-D.4	Riparian Protection Zones
Policy OS-D.7	Wetland and Riparian Plant Management
VEGETATION	
Policy OS-F.1	Terrain and Vegetation Preservation
Policy OS-F.2	Compatible Species
Policy OS-F.6	Hillside Development
Policy OS-F.7	Natural Typography
Policy OS-F.9	Prescribed Burning
PARKS AND RECREATION	
Policy OS-H.11	San Joaquin River Parkway Master Plan
Policy OS-H.12	San Joaquin River Parkway Development
HISTORIC, CULTURAL, AND GEOLOGICAL RESOURCES	
Policy OS-J.1	Preservation of Historic Resources
Policy OS-J.2	Historic Resources Consideration
Policy OS-J.3	Minimize Impacts
Policy OS-J.4	Sites Protection and Mitigation

2. GOALS AND POLICIES

HEALTH AND SAFETY

A. EMERGENCY MANAGEMENT AND RESPONSE

Although Fresno County seeks to minimize hazards and reduce safety risks, in the event of an emergency, quick and effective response is vital. The County's Emergency Response Program is designed to respond to a wide range of emergency situations.

Policies in this section seek to create an effective emergency response and management system for Fresno County through periodic evaluation of the Emergency Response Program, by ensuring that vital public infrastructure is designed to remain operational during and after a major disaster event, by siting critical emergency response facilities as far from potential disaster impact areas as is practical, and through continuing public education and outreach on emergency preparedness and disaster response programs, particularly with the most vulnerable populations. Related policies are included in Section PF-H, Fire Protection and Emergency Medical Services.

The Fresno County Sheriff's Office coordinates with Cal Fire, the Office of Emergency Services, and other key federal, State, and local agencies to develop identified evacuation routes. Routes vary depending on emergency/incident type and location. The incident commanders agree on the routes. Emergency evacuation route information is distributed through an updated public website.

GOAL HS-A

To protect public health and safety by preparing for, responding to, and recovering from the effects of natural or technological disasters.

HS-A.1 Operational Area Master Emergency Service Plan

The County shall, through the Fresno County Operational Area Master Emergency Services Plan and the Fresno County Multi-Hazard Mitigation Plan, maintain the capability to effectively respond to emergency incidents, including maintenance of an emergency operations center. *(PSP/SO)*

HS-A.2 Multi-Jurisdictional Hazard Mitigation Plan

In coordination with cities, special districts, and other State and Federal agencies, the County shall maintain the Fresno County Multi-Jurisdictional Hazard Mitigation Plan to identify and mitigate, to the extent feasible, natural and human-made hazards within the county. *(PSP)*

HS-A.3 Emergency Services During Major Disasters

The County shall, within its authority and to the best of its ability, ensure that emergency dispatch centers, emergency operations centers, communications systems, vital utilities, and other essential public facilities necessary for the continuity of government are designed in a manner that will allow them to remain operational during and following an earthquake or other disaster. *(PSP/SO)*



FRESNO COUNTY GENERAL PLAN

HS-A.4 Critical Emergency Response Facility Siting

The County shall ensure that the siting of critical emergency response facilities such as hospitals, fire stations, sheriff's offices and substations, dispatch centers, emergency operations centers, and other emergency service facilities and utilities are sited and designed to minimize their exposure and susceptibility to flooding, seismic and geological effects, fire, landslides, avalanche, and explosions as required by State regulations. This includes locating new essential public facilities outside of Very High Fire Hazard Severity Zones, if feasible. Exception to this policy shall be allowed on the condition that the only alternative location would be so distant as to jeopardize the safety of the community, given that precautions are taken to protect the facility. *(PSP)*

HS-A.5 Disaster Response Coordination

The County shall maintain coordination with other local, State, and Federal agencies to provide coordinated disaster response, especially to the most impacted populations in the County. *(IGC)*

HS-A.6 Emergency Preparedness Public Awareness Programs

The County shall support local fire agencies through distribution of information during the permit process, through links on County websites, and by providing assistance at public meetings, in promoting the education of County residents concerning emergency preparedness, defensible space, and safety, as described in the Fresno-King Unit Fire-Plan information and public education outreach programs, focusing on the most vulnerable at-risk communities such as those in the Very High Fire Hazard Severity Zone. *(PSP/PI)*

HS-A.7 Building Design

The County shall review the design of all buildings and structures in the Very High Fire Hazard Severity Zones and State Responsibility Areas to ensure they are designed and constructed to State and local regulations and standards as part of the building permit plan check process. *(RDR)*

HS-A.8 Transportation Corridors and Evacuation Routes

The County shall continue to improve community transportation corridors to allow for effective evacuation routes for the public and effective access for emergency responders, including in areas that lack more than two emergency access routes. *(PSP/SP/PI)*

HS-A.9 Vector-Borne Disease Control

The County shall prevent and control the spread of vector-borne diseases through best practice vector control techniques on County properties and will encourage use of these practices on other properties. *(PSP/SO/IGC/PI)*

HS-A.10 Retrofit Existing Critical Facilities and Related Infrastructure

The County, as part of its five-year Capital Improvement Plan, shall conduct an evaluation of all County facilities including those operated by County first responders to determine retrofits that may be needed for long-term resilience to climate change hazards including wildfire and drought. *(PSP/SO/IGC)*

HS-A.11 Improve Resilience in Critical Facilities

The County shall invest in sustainable backup power sources as funding becomes available to provide redundancy and continued services for critical facilities in the event of a power outage triggered by a climate event. *(FB/SO)*

2. GOALS AND POLICIES

HEALTH AND SAFETY

HS-A.12 Access/Evacuation Routes

Establish minimum standards for evacuation, including in the Very High Fire Hazard Severity areas, in the Emergency Operations Plan and continuously reassess access and evacuation route capacity and put mitigation measures and improvement plans in place if needed.

HS-A.13 Future Emergency Service Needs

The County shall periodically evaluate the ability of County facilities to function after a major disaster as well as project and assess future emergency needs.

B. FIRE HAZARDS

Structural and wildland fire hazards can threaten life and property in Fresno County. Wildland fires resulting from either natural or manmade causes occur in forests, brush, grasslands, fallow agricultural areas, and vacant lots. Such fires are capable of causing widespread damage to Fresno County’s valuable range and forest lands, in addition to threatening the lives and personal property of persons residing in wildfire-prone areas. Wildfires can exacerbate air quality problems, particularly during the summer months when ambient air quality is already low. Individuals with high outdoor exposure and individuals with chronic health conditions are particularly vulnerable to poor air quality. These populations are directly exposed to outdoor air pollutants and may have underlying respiratory and/or cardiovascular conditions. In addition, post wildfire debris flows can pose a risk to life and property especially in areas where landslide susceptibility for the County overlaps with wildfire hazard zones. Structural fires generally result from manmade causes and can easily spread through densely-settled urban areas, causing large-scale loss of personal property, personal injury, and, occasionally, fatalities. Figure HS-5 shows the wildfire hazard severity zones (Federal Responsibility Areas and State Responsibility Areas), and Figure HS-6 shows critical facilities and wildfire hazard severity zones.

The following First Responder Agencies and special districts provide fire protection services and/or medical aid services to the unincorporated and incorporated areas of Fresno County: Auberry Volunteer Fire, Bald Mountain Volunteer Fire, Clovis City Fire Department, Coalinga City Fire Department, Firebaugh Volunteer Fire Department, Fowler Fire Department, Fresno City Fire Department, CalFire/Fresno Co. Fire District., Hume Lake Volunteer Fire and Rescue Co., Huntington Lake Volunteer Fire, Kingsburg City Fire, Laton Volunteer Fire, Mountain Valley Volunteer Fire, Orange Cove Fire District, Reedley City Fire Department, Riverdale Volunteer Fire Department, Sanger City Fire Department, Selma City Fire Department, Shaver Lake Volunteer Fire, the United States Forest Service and the Bureau of Land Management. CalFire undertakes defensible space inspections, consistent with California’s Public Resources Code Section 4291, and utilize social media and flyers to reach the public on the importance of defensible space. County also continues to coordinate with CalFire, Cal OES, and the Sheriff’s Office on outreach when needed.

Policies in this section are designed to ensure that new development is constructed to minimize potential fire hazards, minimize the risk of fire in already developed areas, and to provide public education concerning fire prevention. Related policies are included in Section PF-H, Fire Protection and Emergency Medical Services.

GOAL HS-B

To minimize the risk of loss of life, injury, and damage to property and natural resources resulting from fire hazards.

HS-B.1 Fire Hazards Review

The County shall review project proposals to identify potential fire hazards and to evaluate the effectiveness of preventive measures to reduce the risk to life and property. (RDR)



FRESNO COUNTY GENERAL PLAN

HS-B.2 Minimize Fire Hazard Risk Design

The County shall ensure that development in high fire hazard areas is designed and constructed in a manner that minimizes the risk from fire hazards by increasing resistance of structures to heat, flames, and embers. The County shall review current building code standards and other applicable statutes, regulations, requirements, and guidelines regarding construction, and specifically the use and maintenance of non-flammable materials (both residential and commercial) and consider adopting amendments to Title 15 of the County Ordinance Code (Building and Construction) to implement appropriate standards. Special consideration shall be given to the use of fire-resistant construction in the underside of eaves, balconies, unenclosed roofs and floors, and other similar horizontal surfaces in areas of steep slopes. *(RDR)*

HS-B.3 Telecommunications

The County shall coordinate with telecommunication service entities to fire-harden communications.

HS-B.4 Fire Risk Management

The County shall require that new discretionary development including residential subdivisions and large commercial proposals in high-fire-hazard areas have fire-resistant vegetation, cleared fire breaks separating communities or clusters of structures from native vegetation, or a long-term comprehensive vegetation and fuel management program. Fire hazard reduction measures shall be incorporated into the design of development projects in fire hazard areas. *(RDR/PSP)*

HS-B.5 Landscape Features

In consultation with the local fire agency and CalFire, the County shall require structures to be sited to maximize low-flammability landscape features to buffer against wildfire spread. Consultation with the local fire agency will be necessary to make this determination.

HS-B.6 Foothill and Mountain Fire and Emergency Service Access

The County shall require that new foothill and mountain subdivisions and residential areas in Very High Fire Hazard Severity Zones provide for safe and ready access for fire and other emergency equipment, for routes of escape that will safely handle evacuations, and for roads and streets designed to be compatible with topography while meeting fire safety needs. *(RDR)*

HS-B.7 Fire and Emergency Vehicle Access

The County shall require new discretionary development projects to have adequate access for fire and emergency vehicles and equipment. All major subdivisions shall have a minimum of two (2) points of ingress and egress. The County shall implement feasible recommendations in AB2911 Office of the State Fire Marshall Subdivision Survey Reports, which survey subdivisions without a secondary means of egress routes for evacuation and other fire safety factors *(RDR)*

HS-B.8 Fire Risk Management Coordination

The County shall work with local fire protection agencies, local wildfire mitigation groups, the California Department of Forestry and Fire Protection, and the U.S. Forest Service to promote the maintenance of existing fuel breaks and emergency access routes for effective fire suppression and in managing wildland fire hazards. *(RDR/PSP/IGC)*

HS-B.9 Community Fire Breaks Coordination

The County shall require that community fire breaks be coordinated with overall fire break plans developed by CalFire and local foothill and mountain fire agencies for Very High Fire Hazard Severity Zones and State Responsibility Areas. Firebreak easements in subdivisions of more than four parcels or in built-up areas shall include access for firefighting personnel and

2. GOALS AND POLICIES

HEALTH AND SAFETY

motorized equipment. Easements shall be dedicated for this purpose. *(RDR/PSP/IGC)*

HS-B.10 Fire Agency Review of Development Proposals

The County shall refer development proposals in the Very High Fire Hazard Severity Zones and State Responsibility Areas of the unincorporated county to the appropriate local fire agencies for review of compliance with fire safety standards. If dual responsibility exists, both agencies shall review and comment relative to their area of responsibility. If standards are different or conflicting, the more stringent standards shall apply. *(RDR/IGC)*

HS-B.11 Foothill and Mountain Year-round Fire Protection

The County shall work with Cal Fire and local fire agencies to establish development requirements for year-round fire protection in foothill and mountain areas having existing or proposed population concentrations that need structural fire protection, and for agricultural land uses located in and bordering fire hazard zones. *(RDR/PSP)*

HS-B.12 Public Assembly Building Fire Safety Measures

The County shall work to design new and modify existing County buildings of public assembly to incorporate adequate fire protection measures to reduce potential loss of life and property in accordance with State and local codes and ordinances and include consideration for filtration systems that improve air quality. *(RDR)*

HS-B.13 Water Storage

The County shall permit development only within areas that have adequate water resources available, to include water pressure, onsite water storage, or fire flows.

HS-B.14 Minimum Fire Flow Water Systems

The County shall require new discretionary development to have water systems that meet fire flow requirements as determined by applicable California Fire Code requirements and/or National Fire Protection Association (NFPA) standards under the authority of the Chief Fire Code Official and as referenced in County Ordinance Code. Where minimum fire flow is not available to meet these standards, alternate fire protection measures, including sprinkler systems and on-site water supply or storage, shall be identified, and may be incorporated into development if approved by the appropriate fire protection agency. The County shall require that all public water providers maintain the long-term integrity of adequate water supplies and flow to meet fire suppression needs. *(RDR)*

HS-B.15 Fire Protection

The County shall ensure that any new development will have adequate fire protection, including proximity to adequate emergency services, adequate provisions for fire flow and emergency vehicle access and fire hardened communication, including high speed internet service.

HS-B.16 Location of New Developments

The County shall restrict or require mitigation for new discretionary development along steep slopes and amidst rugged terrain to limit rapid fire spread and increase accessibility for firefighting.

HS-B.17 Smoke Detectors

The County shall promote installation and maintenance of smoke detectors in existing residences and commercial facilities that were constructed prior to the requirement for their installation. *(PSP)*



FRESNO COUNTY GENERAL PLAN

HS-B.18 High-visibility Fire Prevention Programs

The County shall work with local fire agencies to develop high-visibility fire prevention programs, including education programs and voluntary home inspections. (*PSP/IGC*)

HS-B.19 Site Specific Fire Management Plans

The County shall require all new discretionary development consisting of major residential subdivisions and large commercial projects in the Very High Fire Hazard Severity Zone and State Responsibility Areas to develop site-specific fire management plans to maintain adequate access for emergency vehicles, including two points of access for subdivisions and multifamily developments, address fuel modification and/or incorporation of open space or other defensible space areas, maintain vegetation clearance on public and private roads, and include disclosure requirements to future property owners or residents as required by state law. Require ongoing maintenance and upkeep to be incorporated or recorded as part of building covenants or homeowner covenants, conditions, and restrictions.

HS-B.20 Route Capacity, Safety and Visibility

As part of the next update to the Fresno County Multi-Hazard Mitigation Plan, the County, working with emergency service agencies, shall evaluate evacuation route capacity, safety, and viability under a range of emergency scenarios to facilitate fire, law enforcement, and ambulance access and resident egress, consistent with the existing goals and objective of the Fresno County Multi-Hazard Mitigation Plan.

HS-B.21 Fuel Loads on Federal Lands

The County shall collaborate with federal agencies to better manage fuel loads and hazards that could impact County owned/operated infrastructure on federally owned or managed lands.

HS-B.22 Defensible Space

The County shall make available and promote educational materials for defensible space standards, or vegetation “clear zones,” and vegetation compliance for all existing and new structures in areas that are designated by the California Department of Forestry and Fire Protection and Local Ordinance 15.60. as State Responsibility Areas or Very High Fire Hazard Severity Zones.

HS-B.23 Non-conforming Developments

The County, working with applicable fire agencies, shall make reasonable effort to minimize the risk to existing developments in Very High Fire Hazard Severity Zones and State Responsibility Areas by educating property owners and responsible entities of the benefits of improving such developments to contemporary fire safe standards, in terms of road standards and vegetative hazard, and require all development to meet or exceed the County’s Title 15 – Building and Construction, Chapter 15.60 State Responsibility Area Fire Safe Regulations of the County under the County’s Code of Ordinances and applicable updates.

HS-B.24 Emergency Vehicle Access

The County shall require all new discretionary development consisting of major residential subdivisions and large commercial projects to provide, and existing development to maintain, adequate access for emergency vehicles, including two points of access for subdivisions and multifamily developments.

HS-B.25 State Responsibility Areas Fire Safe Regulation

Require development to adhere to standards that meet or exceed Title 14, CCR, Division 1.5, Chapter 7, Subchapter 2, Articles 1-5 (commencing with Section 1299.01) (Fire Hazard Reduction Around Buildings and Structures Regulations) for State Responsibility Areas and/or Very High Fire Hazard Severity Zones.

2. GOALS AND POLICIES

HEALTH AND SAFETY

HS-B.26 Master Emergency Services Plan

The County shall maintain and update its Master Emergency Services Plan, as necessary, to include an assessment of current emergency service and projected emergency service needs, and goals or standards for emergency service training for County staff and volunteers.

HS-B.27 Post Fire Re-development

In the event of a large fire, the County shall evaluate re-development within the impacted fire zone to conform to contemporary fire safe standards and require all development to meet or exceed the County's Title 15 - Building and Construction, Chapter 15.60 State Responsibility Area Fire Safe Regulations of the County under the County's Code of Ordinances and applicable updates.

HS-B.28 Fire Safe New Construction and Re-Construction

The County shall coordinate with local and state fire agencies to ensure that all new developments and applicable re-constructions (as defined by state law) in the very high fire hazard severity zone and State Responsibility Areas, comply with defensible space regulations, home and street addressing and signage, the latest fire-safe standards, Board of Forestry and Fire Protection fire safe regulations and the most current version of the California Building Code and California Fire Code.

HS-B.29 Underground Power Lines

Coordinate with Southern California Edison and Pacifica Gas and Electric Company to implement an electrical undergrounding plan with a focus on critical evacuation roadways and areas with highest wildfire risk.

HS-B.30 Hazard Mitigation Plan

The County shall, if necessary, revise the Health and Safety Element upon each revision of the Housing Element or Fresno County Multi-Hazard Mitigation Plan, but not less than once every eight years, to identify new information

relating to flood and fire hazards and climate adaptation and resiliency strategies applicable to the county.

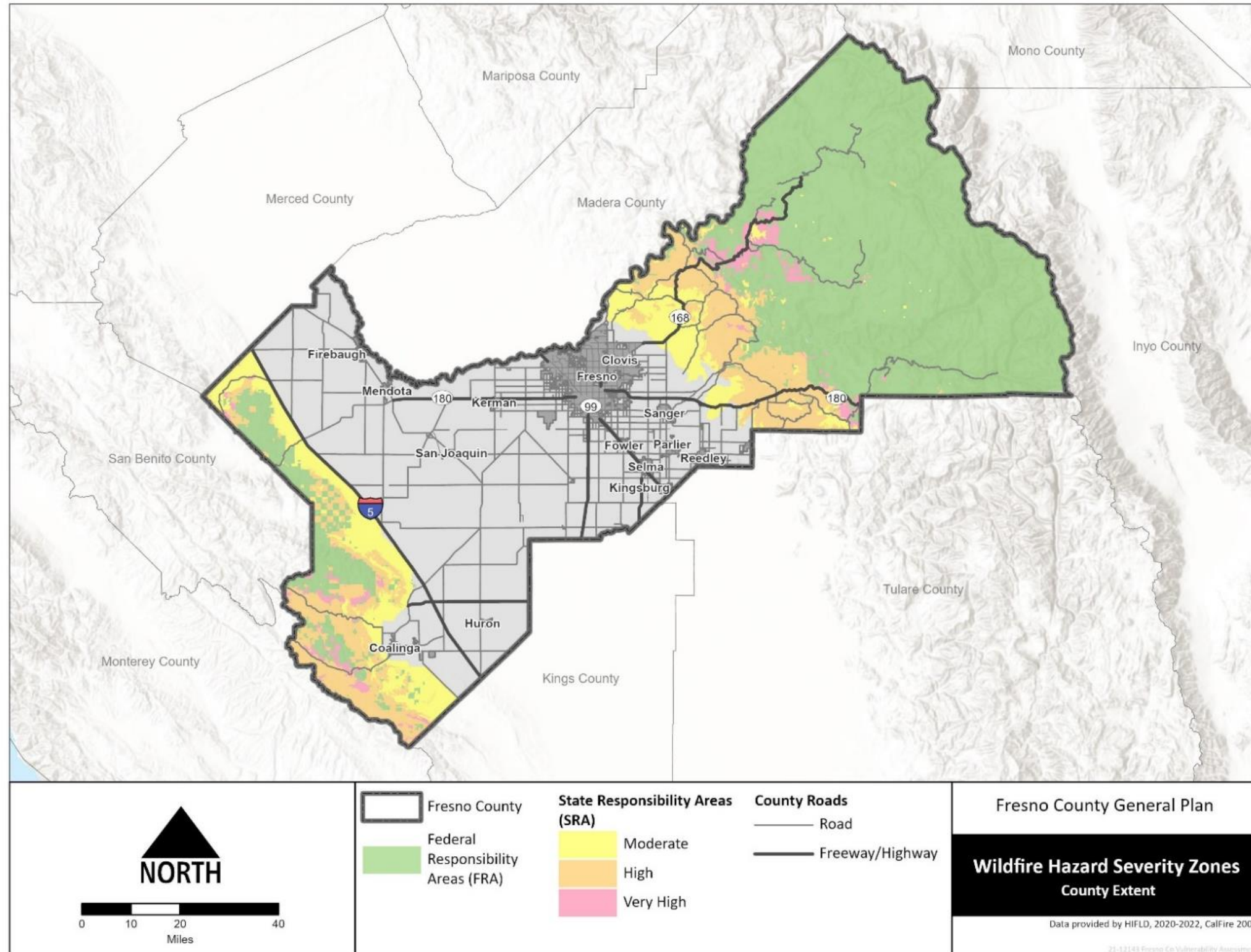
HS-B.31 Restrict Parking

The County shall work with relevant agencies such as CAL FIRE, Fresno County Sheriff's Office, Caltrans, Fresno County Public Works and Planning, and private Home Owners Associations, to restrict parking periodically (e.g., on red flag days) along critical evacuation routes.



FRESNO COUNTY GENERAL PLAN

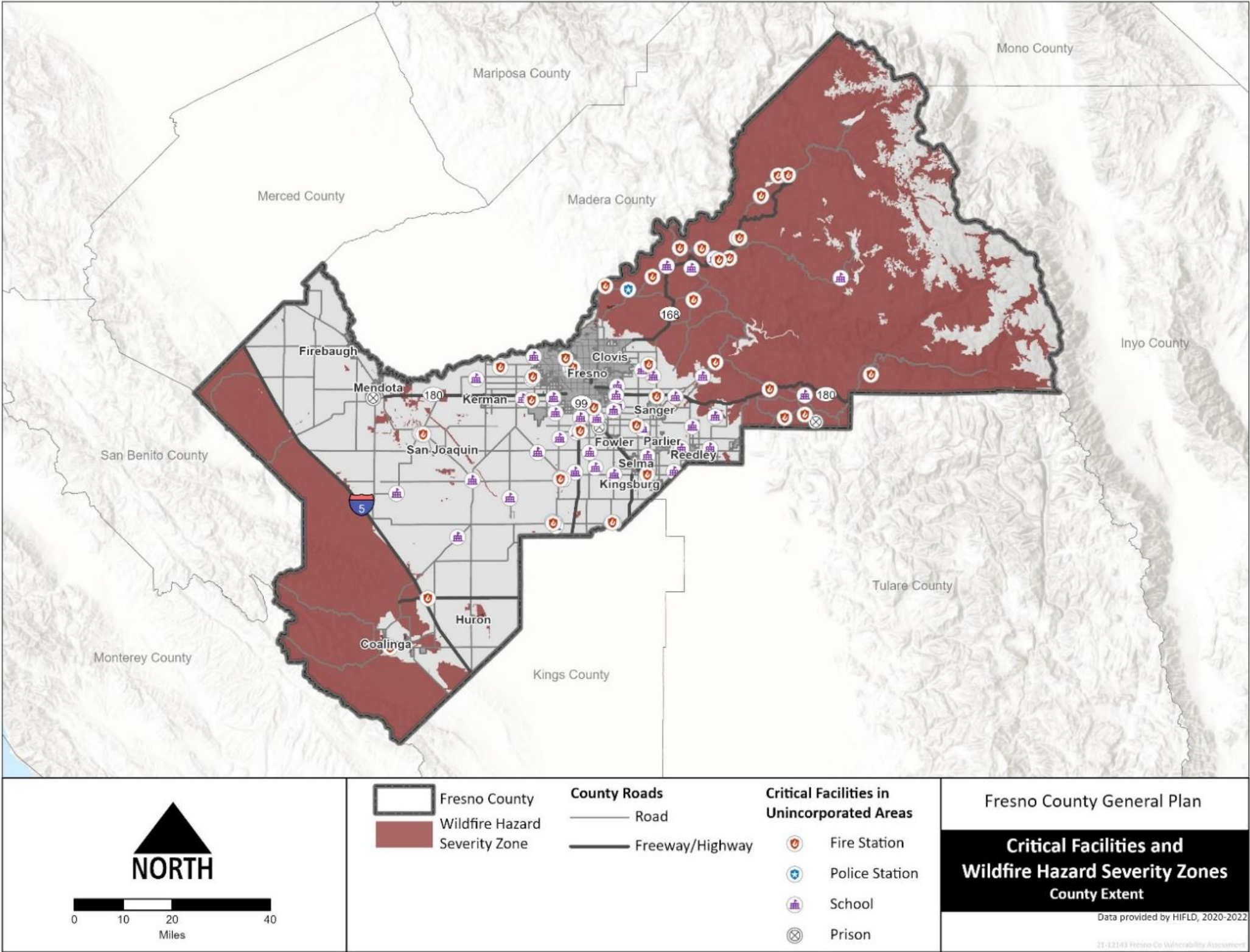
Figure HS-5 Wildfire Hazard Severity Zones



2. GOALS AND POLICIES

HEALTH AND SAFETY

Figure HS-6 Critical Facilities and Wildfire Hazard Severity Zones





FRESNO COUNTY GENERAL PLAN

C. FLOOD HAZARDS

Flooding is a natural occurrence in the Central Valley because it is the drainage basin for thousands of watershed acres of Sierra Nevada and Coast Range foothills and mountains. Flooding in Fresno County occurs primarily along the Kings River in the central-eastern portion of the county, some sections of the San Joaquin River, and many of the foothill streams along the east and west sides of the valley. Flooding can also occur in the event of a failure of a dam. Figure HS-7 shows dam inundation hazards in Fresno County. A variety of mechanisms are currently employed to reduce flood damage in flood prone areas, including flood control reservoirs, levee systems, and watershed treatment.

The Legislature in 2007 passed a package of new laws that significantly strengthened flood protection regulations in California. SB 5 requires the California Department of Water Resources and Central Valley Flood Protection Board to prepare and adopt a Central Valley Flood Protection Plan (CVFPP) by 2012. The legislation also establishes certain flood protection requirements for local land use decision-making based on the CVFPP. This law sets new standards for flood protection for the San Joaquin Valley area. It requires an urban level of flood protection necessary to withstand a 1 in 200 chance of a flood event occurring in any given year (200-year flood) for areas developed or planned to have a population of at least 10,000. It also requires the County to collaborate with cities to develop a flood emergency response plan. AB 162 strengthened and expanded existing requirements for general plans to address flooding issues.

Policies in this section are designed to minimize flood hazards by restricting development in flood-prone areas, requiring development that does occur in floodplains to be designed to avoid flood damage, and through public education about flood hazards. Related policies are included in Section PF-E, Storm Drainage and Flood Control, and Section LU-C, River Influence Areas.

GOAL HS-C

To minimize the risk of loss of life, injury, and damage resulting from flood hazards.

HS-C.1 Countywide Flood Emergency Plan

The County shall coordinate with the cities in Fresno County to develop and maintain a countywide flood emergency plan that is consistent with the Fresno County General Plan and city general plans. (RDR)

HS-C.2 Flood Risk Consideration

The County shall prohibit new development in existing undeveloped areas (i.e., areas devoted to agriculture or open space that are not designated for development) protected by a State flood control project without appropriately considering significant known flooding risks and taking reasonable and feasible action to mitigate the potential property damage to the new development resulting from a flood. (RDR)

HS-C.3 Finding of Flood Protection for New Development

The County shall not enter into a development agreement, approve any building permit or entitlement, or approve a tentative or parcel map unless it finds one of the following:

- a. The flood control facilities provides 200-year level of protection in urban and non-urban areas consistent with the current Central Valley Flood Protection Plan;

2. GOALS AND POLICIES

HEALTH AND SAFETY

- b. Conditions imposed on the development will protect the property at a 200-year level of protection in urban and non-urban areas consistent with the current Central Valley Flood Protection Plan; or
- c. The local flood management agency has made “adequate progress” on the construction of a flood protection system which will result in protection equal or greater than the 200-year flood event in urban and non-urban areas consistent with the current Central Valley Flood Protection Plan. *(RDR)*

HS-C.4 Floodwater Diversion

The County shall require new flood control projects or developments within areas subject to 100- and 200-year frequency floods are designed and constructed in a manner that will not cause floodwaters to be diverted onto adjacent property or increase flood hazards to property located elsewhere. *(RDR)*

HS-C.5 Minimize Public Facility Impacts

The County shall encourage all agencies that operate public facilities, such as wastewater treatment plants, gas, electrical, and water systems, located within areas subject to 100- and 200-year frequency floods to locate and construct facilities to minimize or eliminate potential flood damage. *(RDR)*

HS-C.6 Adapting Infrastructure to Climate Change

The County shall encourage expansion of stormwater and flood protection infrastructure capacity in order to accommodate changes in precipitation and extreme weather events including the establishment or expansion of recharge basins. *(RDR)*

HS-C.7 Relocation Assistance

The County shall support State and local flood management agencies to provide relocation assistance or other cost-effective strategies for reducing flood risk to existing economically-disadvantaged communities located in non-urbanized areas. *(IGC)*

HS-C.8 Flood Risk Information Base

The County shall work with local, regional, State, and Federal agencies to maintain an adequate information base, prepare risk assessments, and identify strategies to mitigate flooding impacts. *(PSP/PSR/IGC)*

HS-C.9 Stormwater Flow Control

The County shall encourage the Fresno Metropolitan Flood Control District to control stormwater flows originating in the streams of the Fresno County Stream Group and the stormwater resulting from urban development by means of construction of dams or joint-use flood control and recharge facilities at appropriate locations. *(PSP/IGC)*

HS-C.10 Dam and Levee Design

The County shall require that the design and location of dams and levees be in accordance with applicable design standards and specifications and accepted design and construction practices. *(RDR/PSP)*

HS-C.11 Land Use Regulation for Flood Risk Management

The County shall promote a floodplain management approach in flood hazard areas that are presently undeveloped by giving priority to regulation of land uses over development of structural controls as a method of reducing flood damage. *(RDR/PSP)*



FRESNO COUNTY GENERAL PLAN

HS-C.12 200-Year Water Surface Elevation Investigations

The County shall encourage the performance of appropriate investigations to determine the 200-year water surface elevations for the San Joaquin River, taking into account recent storm events and existing channel conditions, to identify the potential extent and risk of flooding. New development, including public infrastructure projects, shall not be allowed along the river until the risk of flooding at the site has been determined and appropriate flood risk reduction measures identified. *(RDR/PSR)*

HS-C.13 Flood Control Facility Planning

Where existing development is located in a flood hazard area, the County shall require that construction of flood control facilities proceed only after a complete review of the environmental effects and a project cost/benefit analysis. *(RDR/PSR)*

HS-C.14 200-Year Floodplain Protection

The County shall promote flood control measures that maintain natural conditions within the 200-year floodplain of rivers and streams and, to the extent possible, combine flood control, recreation, water quality, and open space functions. Existing irrigation canals shall be used to the extent possible to remove excess stormwater. Retention-recharge basins should be located to best utilize natural drainage patterns. *(PSP)*

HS-C.15 Federal Flood Insurance Program

The County shall continue to participate in the Federal Flood Insurance Program by ensuring compliance with applicable requirements. *(PSP)*

HS-C.16 Floodplain Management Ordinance

The County shall continue to implement and enforce its Floodplain Management Ordinance. During the building permit review process, the County shall ensure project compliance with applicable Federal Emergency Management Agency (FEMA) standards pertaining to

residential and non-residential development in the floodplain, floodway, or floodway fringe. *(RDR)*

HS-C.17 Essential Facilities Siting

The County shall prohibit the construction of essential facilities (e.g., hospitals, police and fire facilities) in the 100- and 200-year floodplains, unless it can be demonstrated that the facility can be safely operated and accessed during flood events. *(RDR/PSP)*

HS-C.18 Flood Hazard Area Open Space

The County shall encourage open space uses in all flood hazard areas. Land Conservation contracts and open space and scenic easements should be made available to property owners. *(PSP)*

HS-C.19 Dam Inundation Review

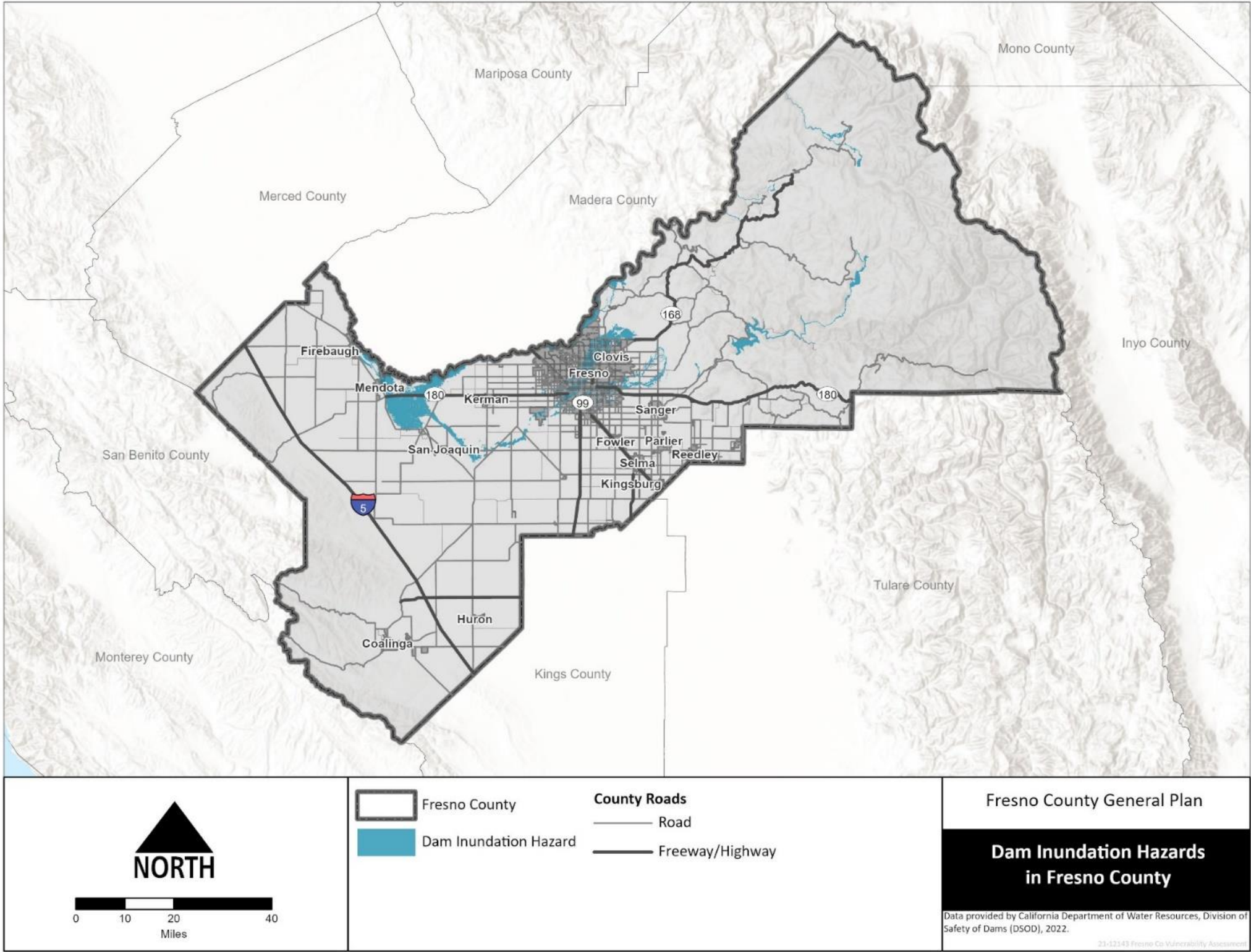
The County shall consider dam failure inundation maps of all reservoirs in making land use and related decisions. *(RDR)*

HS-C.20 Flood Risk Public Awareness

The County shall continue public awareness programs to inform the general public and potentially affected property owners of flood hazards and potential dam failure inundation. *(PSP/PI)*

2. GOALS AND POLICIES HEALTH AND SAFETY

Figure HS-7 Dam Inundation Hazards





FRESNO COUNTY GENERAL PLAN

D. SEISMIC AND GEOLOGICAL HAZARDS

There are a number of active and potentially-active faults within and adjacent to Fresno County. Although most of Fresno County is situated within an area of relatively low seismic activity by comparison to other areas of the state, the faults and fault systems that lie along the eastern and western boundaries of the county, as well as other regional faults, have the potential to produce high-magnitude earthquakes throughout the county. The principle earthquake hazard is groundshaking. Older buildings constructed before building codes were established and newer buildings constructed before earthquake-resistant provisions were included in the building codes are the most likely to be damaged during an earthquake. Other geologic hazards in Fresno County include landslides, subsidence, expansive soils and erosion, and volcanic hazards. Figure HS-8 shows seismic hazards and landslide susceptibility in the County.

Policies in this section seek to ensure that new buildings and facilities are designed to withstand seismic and geologic hazards.

GOAL HS-D

To minimize the loss of life, injury, and property damage due to seismic and geologic hazards.

HS-D.1 Geologic Investigations and Knowledge

The County shall continue to support scientific geologic investigations that refine, enlarge, and improve the body of knowledge on active fault zones, unstable areas, severe groundshaking, avalanche potential, and other hazardous geologic conditions in Fresno County. (PSR)

HS-D.2 Geologic Hazard Mitigation Planning

The County shall ensure that the General Plan and/or County Ordinance Code is revised, as necessary, to incorporate geologic hazard areas

formally designated by the State Geologist (e.g., Earthquake Fault Zones and Seismic Hazard Zones). Development in such areas, including public infrastructure projects, shall not be allowed until compliance with the investigation and mitigation requirements established by the State Geologist can be demonstrated. (RDR)

HS-D.3 Soils and Geologic-Seismic Analysis

The County shall require that a soils engineering and geologic-seismic analysis be prepared by a California-registered engineer or engineering geologist prior to permitting development, including public infrastructure projects, in areas prone to geologic or seismic hazards (i.e., fault rupture, groundshaking, lateral spreading, lurchcracking, fault creep, liquefaction, subsidence, settlement, landslides, mudslides, unstable slopes, or avalanche). (RDR/PSR)

HS-D.4 Soils and Geologic-seismic Structure Design

The County shall require all proposed structures, additions to structures, utilities, or public facilities situated within areas subject to geologic-seismic hazards as identified in the soils engineering and geologic-seismic analysis to be sited, designed, and constructed in accordance with applicable provisions of the California Building Code (Title 24 of the California Code of Regulations) and other relevant professional standards to minimize or prevent damage or loss and to minimize the risk to public safety. (RDR)

HS-D.5 Alquist-Priolo Earthquake Fault Act

Pursuant to the Alquist-Priolo Earthquake Fault Zoning Act (Public Resources Code, Chapter 7.5), the County shall not permit any structure for human occupancy to be placed within designated Earthquake Fault Zones unless the specific provisions of the Act and Title 14 of the California Code of Regulations have been satisfied. (RDR)

2. GOALS AND POLICIES

HEALTH AND SAFETY

HS-D.6 Seismic Standards for Critical Facilities

The County shall ensure compliance with State seismic and building standards in the evaluation, design, and siting of critical facilities, including police and fire stations, school facilities, hospitals, hazardous material manufacture and storage facilities, bridges, large public assembly halls, and other structures subject to special seismic safety design requirements. *(RDR)*

HS-D.7 Soils Report

The County shall require a soils report by a California-registered engineer or engineering geologist for any proposed development, including public infrastructure projects, that requires a County permit and is located in an area containing soils with high “expansive” or “shrink-swell” properties. Development in such areas shall be prohibited unless suitable design and construction measures are incorporated to reduce the potential risks associated with these conditions. *(RDR/PSR)*

HS-D.8 Minimize Soil Erosion

The County shall seek to minimize soil erosion by maintaining compatible land uses, suitable building designs, and appropriate construction techniques. Contour grading, where feasible, and revegetation shall be required to mitigate the appearance of engineered slopes and to control erosion. *(RDR)*

HS-D.9 Drainage Plans

The County shall require the preparation of drainage plans for development or public infrastructure projects in hillside areas to direct runoff and drainage away from unstable slopes. *(RDR/PSP)*

HS-D.10 Maximum Slope Requirements

The County shall not approve a County permit for new development, including public infrastructure projects where slopes are over thirty (30) percent unless it can be demonstrated by a California-registered civil engineer or engineering geologist that hazards to public safety will be reduced to acceptable levels. *(RDR)*

HS-D.11 Landslide Hazard Areas

In known or potential landslide hazard areas, the County shall prohibit avoidable alteration of land in a manner that could increase the hazard, including concentration of water through drainage, irrigation, or septic systems, undercutting the bases of slopes, removal of vegetative cover, and steepening of slopes. *(RDR)*

HS-D.12 Avalanche Hazard Areas

The County shall not approve a County permit for new development, including public infrastructure projects, in known or potential avalanche hazard areas unless it can be demonstrated by a California-registered engineer or engineering geologist that the structures will be safe under anticipated snow loads and avalanche conditions. *(RDR)*

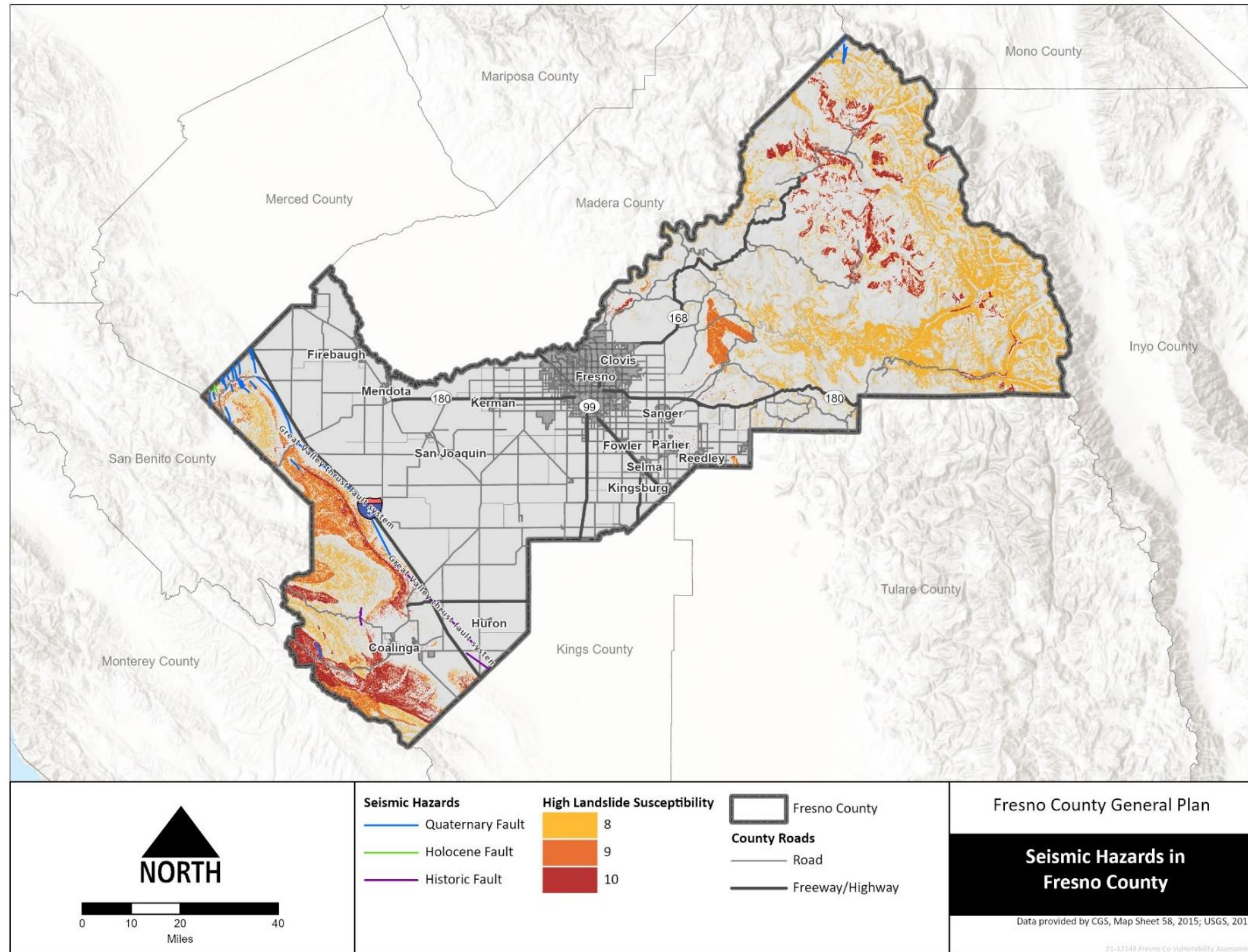
HS-D.13 Geologic Hazard Areas Designations

Whenever zoning is employed to restrict the use of land subject to severe geologic hazards (e.g., landslides), the County shall designate parcels so restricted for open space uses. *(RDR)*



FRESNO COUNTY GENERAL PLAN

Figure HS-8 Seismic Hazards





FRESNO COUNTY GENERAL PLAN

E. AIRPORT HAZARDS

Airport safety hazards include hazards posed to aircraft and hazards posed by aircraft to people and property on the ground. With proper land use planning, aircraft safety risks can be reduced, primarily by avoiding incompatible land uses.

Policies in this section are designed to minimize public exposure to risks associated with airport operations and to minimize the siting of land uses near airports that might interfere with airport operations. Related policies are included in Section HS-F, Hazardous Materials, and Section HS-G, Noise.

GOAL HS-E	To minimize the exposure of the public to high noise levels and safety hazards through land use controls and policies for property in the vicinity of airports, and to limit urban encroachment around airports in order to preserve the safety of flight operations and the continued viability of airport facilities.
----------------------	---

HS-E.1 Airport Land Use Policy Plans

The County shall limit land uses in airport safety zones to those uses listed in the applicable CLUPPs as compatible uses. Exceptions shall be made only as provided for in the CLUPPs. Such uses shall also be regulated to ensure compatibility in terms of location, height, and noise. (RDR)

HS-E.2 Airport Safety Hazards

The County shall ensure that new development, including public infrastructure projects, does not create safety hazards such as glare from direct or reflective sources, smoke, electrical interference, hazardous chemicals, or fuel storage in violation of adopted safety standards. (RDR)

HS-E.3 Federal Airport Safety Zones

The County shall ensure that development, including public infrastructure projects, within the airport approach and departure zones complies with Part 77 of the Federal Aviation Administration Regulations (Objects Affecting Navigable Airspace). (RDR)

F. HAZARDOUS MATERIALS

Hazardous waste handlers and generators in Fresno County include industries, businesses, public and private institutions, and households. The transport, storage, use, and disposal of toxic or hazardous materials poses potential safety hazards in the event of unintentional exposure, leak, fire, or accident.

Policies in this section are designed to ensure that development projects minimize public risks associated with both intended and unintended exposure to hazardous materials and wastes. Related policies are included in Section HS-A, Emergency Management and Response.

GOAL HS-F	To minimize the risk of loss of life, injury, serious illness, and damage to property resulting from the use, transport, treatment, and disposal of hazardous materials and hazardous wastes.
----------------------	---

HS-F.1 Hazardous Materials Facilities

The County shall require that facilities that handle hazardous materials or hazardous wastes be designed, constructed, and operated in accordance with applicable hazardous materials and waste management laws and regulations. (RDR)

HS-F.2 Hazardous Waste Applications

The County shall require that applications for discretionary development projects that will use hazardous materials or generate hazardous waste in large quantities include detailed information concerning hazardous waste reduction, recycling, and storage. (RDR)



FRESNO COUNTY GENERAL PLAN

HS-F.3 Hazardous Materials Incident Response Plan

The County, through its Hazardous Materials Incident Response Plan, shall coordinate and cooperate with emergency response agencies to ensure adequate countywide response to hazardous materials incidents. *(PSP/IGC)*

HS-F.4 Soil and Groundwater Contamination Reports

For redevelopment or infill projects or where past site uses suggest environmental impairment, the County shall require that an investigation be performed to identify the potential for soil or groundwater contamination. In the event soil or groundwater contamination is identified or could be encountered during site development, the County shall require a plan that identifies potential risks and actions to mitigate those risks prior to, during, and after construction. *(RDR/PSR)*

HS-F.5 Demolition Standards

The County shall require that demolition of structures where friable asbestos or other hazardous materials could be released into the environment comply with applicable regulations and standards. *(RDR)*

HS-F.6 Timely Site Cleanup

The County shall work cooperatively with the State Department of Toxic Substances Control and Regional Water Quality Control Board to promote the timely and efficient cleanup of contaminated sites under the regulatory oversight of these agencies. *(RDR/IGC)*

HS-F.7 Mining and Mineral Processing Standards

The County shall ensure that the mining and processing of minerals in the county is conducted in compliance with applicable environmental protection standards. *(RDR)*

HS-F.8 Household Hazardous Waste Collection Programs

The County shall encourage and promote household hazardous waste information and collection programs. *(PSP/PI)*

G. ADAPTATION AND RESILIENCY

The growing effects of climate change have increased the frequency and severity of natural disasters. The Fresno County Climate Change Vulnerability Assessment (Appendix C) evaluates how climate change may impact vulnerable populations, natural resources, agriculture, critical facilities, buildings, services, and infrastructure in unincorporated Fresno County. In Fresno County, average annual temperatures are expected to increase along with an increasing intensity of precipitation events and longer dry periods. These changes in temperature and precipitation patterns are expected to influence the frequency, duration, and magnitude of a variety of climate hazards including extreme heat, warm nights, chill hours, drought, wildfire, landslides, tule fog, riverine and stormwater flooding, and air quality. While the effects of these events pose great risks to life and property, implementation of adaptation and resiliency strategies and practices can increase the community’s resiliency.

Goals and policies in this Element are based on the findings of the Fresno County Climate Change Vulnerability Assessment (Appendix C). Policies to address climate change impacts related to previous sections of the Health and Safety Element (Emergency Management and Response, Fire Hazards, Flood Hazards, Seismic and Geological Hazard) can be found in those sections. Goals and policies to address climate change-specific hazards including extreme heat, drought, air quality, chill hours, and tule fog, are addressed in this section. The climate change adaptation and resiliency goals and policies provide resiliency benefits to the population groups and assets in Fresno County most at risk to the effects of climate change

GOAL HS-G	To improve the sustainability and resiliency of the County through continued efforts to reduce the causes of and adapt to climate change.
----------------------	---

2. GOALS AND POLICIES

HEALTH AND SAFETY

HS-G.1 Reduce Impacts of Climate Change

When based on sound science, the County shall support plans, standards, regulation, incentives, and investments to reduce the impacts of climate change. *(IGC/MPSP/ RDR/PSR)*

HS-G.2 Monitor Risks from the Effects of Climate Change.

The County shall regularly (at minimum every eight years) update the Fresno County Climate Change Vulnerability Assessment to reflect the best available information from Federal, State, and regional agencies on the effects of climate change to determine if the County should implement additional adaptation strategies. *(IGC/CSO)*

HS-G.3 Collaborate on Climate Adaptation

The County shall continue to collaborate with Federal, State, regional, and local agencies, business and property owners, and residents to reduce generation of GHG and other emissions that contribute to climate change and effectively implement climate change adaptation policies and programs. *(IGC/JP)*

HS-G.4 Climate Pollution Reduction Practices for Income-Qualified Homes

The County shall support programs to provide financial assistance for the retrofitting of homes whose property owners are income qualified (such as water and energy efficiency upgrades, improved insulation, renewable energy upgrades, use of electric appliances, consideration of air quality, access to indoor cooling, structure hardening if the homes are in wildfire zones and elevating if homes are in flood zones). *(PSP/FB)*

HS-G.5 Cooling Centers

The County shall continue to work with cities and unincorporated community service districts to open cooling centers during extreme heat events, advertise the availability of these centers to unincorporated communities, and confirm that

there is convenient access to these centers for unincorporated communities. *(PSP/SO/IGC)*

HS-G.6 Immediate Assistance and Emergency Shelters

The County shall work with community-based organizations to provide immediate assistance locations and emergency shelters in unincorporated areas of the County areas of the during extreme heat events, poor air quality, severe weather events, drought, and other highly hazardous conditions. The County shall focus outreach and education of resources to vulnerable communities. *(PSP/SO/IGC/JP)*

HS-G.7 Climate Adaptation on Urban Lands

The County shall utilize drought-tolerant plantings and shade structures for applicable County projects as part of cooling strategies in areas with impermeable surfaces to help reduce heat islands and energy demand during extreme heat events. Project implementation shall be prioritized in disadvantaged unincorporated communities. *(PSP)*

HS-G.8 Climate Adaptation on Agricultural Lands

The County shall work with groups such as the University of California Cooperative Extension and the Fresno County Farm Bureau to increase field observation and monitoring, develop a climate information services/early warning system and estimates of weather and climate impact (e.g., extreme heat, warm nights, chill hours, drought, and tule fog) on crop and livestock operations. *(PSP/JP)*

HS-G.9 Climate Adaptation on Natural Lands

The County shall identify and protect locations where native species may shift or lose habitat due to climate change impacts (e.g., extreme heat, wildfire and landslides) and consider ecosystem shift when updating conservation and land use plans. *(PSP/PSR)*



FRESNO COUNTY GENERAL PLAN

HS-G.10 Evacuation Awareness

The County shall identify and communicate safe and viable evacuation routes in multiple languages and across various communication platforms, as appropriate, to reach vulnerable populations. (PSP/PI)

HS-G.11 Safety Zones

The County shall identify appropriate temporary areas of refuge to provide for shelter-in-place when evacuation routes become blocked. (PSP)

H. NOISE

Noise is subjectively defined as unwanted sound. Noise can result from many sources, including traffic on freeways and other roads, railroad operations, aircraft, and industrial activities. Exposure to excessive noise is often cited as a health problem, primarily in terms of its contribution to undue stress and annoyance. The Background Report includes an analysis of major noise sources in the county and noise contours along major traffic corridors.

Policies in this section set noise standards and seek to protect noise-sensitive uses from excessive noise either through noise-reducing project design features or by allowing noise-sensitive land uses to only locate in areas with ambient noise levels below specific thresholds. Related policies are included in Section LU-D, Westside Freeway Corridor, and Section LU-F, Urban Development Patterns.

GOAL HS-H

To protect residential and other noise-sensitive uses from exposure to harmful or annoying noise levels; to identify maximum acceptable noise levels compatible with various land use designations; and to develop a policy framework necessary to achieve and maintain a healthful noise environment.

HS-H.1 Minimize Noise Impacts

The County shall require that all proposed development incorporate design elements

necessary to minimize adverse noise impacts on surrounding land uses. (RDR)

HS-H.2 Acceptable Road Noise Levels

The County shall require new roadway improvement projects to achieve and maintain the normally acceptable noise levels shown in Figure HS-9: “Land Use Compatibility for Community Noise Environments.” (RDR)

HS-H.3 Noise-sensitive Land Uses

The County shall allow the development of new noise-sensitive land uses (which include, but are not limited to, residential neighborhoods, schools, and hospitals) only in areas where existing or projected noise levels are “acceptable” according to the Figure HS-9: “Land Use Compatibility for Community Noise Environments.” Noise mitigation measures may be required to reduce noise in outdoor activity areas and interior spaces to these levels. (RDR)

HS-H.4 Noise Mitigation Design and Acoustical Analysis

So that noise mitigation may be considered in the design of new projects, the County shall require an acoustical analysis as part of the environmental review process where:

- a. Noise sensitive land uses are proposed in areas exposed to existing or projected noise levels that are “generally unacceptable” or higher according to the Figure HS-9: “Land Use Compatibility for Community Noise Environments;”
- b. Proposed projects are likely to produce noise levels exceeding the levels shown in the County’s Noise Control Ordinance at existing or planned noise-sensitive uses. (RDR/PSR)

HS-H.5 Noise Mitigation Measures

Where noise mitigation measures are required to achieve acceptable levels according to land use compatibility or the Noise Control Ordinance, the County shall place emphasis of such measures upon site planning and project design. These measures may include, but are not limited to, building orientation, setbacks, earthen berms, and building construction practices. The County

2. GOALS AND POLICIES

HEALTH AND SAFETY

shall consider the use of noise barriers, such as soundwalls, as a means of achieving the noise standards after other design-related noise mitigation measures have been evaluated or integrated into the project. (RDR)

HS-H.6 Construction-related Noise

The County shall regulate construction-related noise to reduce impacts on adjacent uses in accordance with the County's Noise Control Ordinance. (RDR)

HS-H.7 Noise impacts to Sensitive Uses

Where existing noise-sensitive uses may be exposed to increased noise levels due to roadway improvement projects, the County shall apply the following criteria to determine the significance of the impact:

- a. Where existing noise levels are less than 60 dBLdn at outdoor activity areas of noise-sensitive uses, a 5 dBLdn increase in noise levels will be considered significant;
- b. Where existing noise levels are between 60 and 65 dBLdn at outdoor activity areas of noise-sensitive uses, a 3 dBLdn increase in noise levels will be considered significant; and
- c. Where existing noise levels are greater than 65 dBLdn at outdoor activity areas of noise-sensitive uses, a 1.5 dBLdn increase in noise levels will be considered significant. (RDR)

HS-H.8 Noise Levels Compatibility

The County shall evaluate the compatibility of proposed projects with existing and future noise levels through a comparison to Chart HS-1, "Land Use Compatibility for Community Noise Environments." (PSR)

HS-H.9 Noise Impacts Adjacent to Airports

The County shall not allow the development of new residential land uses in areas exposed to existing or projected levels of noise from aircraft operations at any airport or air base which exceed 60 dBLdn or CNEL. (RDR)

HS-H.10 Funding for a Greenhouse Gas Inventory and Preparation of a Climate Action Plan

The County shall seek a variety of sources including, but not limited to, grants, state funding, and or impact fees to fund the preparation and implementation of a Fresno County specific Climate Action Plan. Once funding is available, the County shall proceed to prepare a Climate Action Plan.

HS-H.11 Preparation and Implementation of a Climate Action Plan

The County shall undertake a countywide Climate Action Plan (CAP) within two years of the adoption of General Plan Amendment No. 529 (General Plan Review) with the objective of meeting a GHG emissions reduction trajectory consistent with State law (currently codified in Health and Safety Code Section 38566 et seq. [Senate Bill 32] and Executive Order B-55-18).

HS-H.12 Construction Vibration Control Measures

The following measures to minimize exposure to construction vibration shall be included as standard conditions of approval for projects involving construction vibration within 50 feet of historic buildings or nearby sensitive receivers shall:


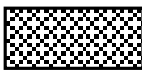


- a. Avoid the use of vibratory rollers within 50 feet of historic buildings or residential buildings with plastered walls that are susceptible to damage from vibration and;
- b. Schedule construction activities with the highest potential to produce vibration to hours with the least potential to affect nearby institutional, educational, and office uses that are identified as sensitive to daytime vibration by the Federal Transit Administration in Noise and Vibration Impact Assessment (FTA 2018)



FRESNO COUNTY GENERAL PLAN

Figure HS-9 Land Use Compatibility for Community Noise Environments

Land Use Category	Community Noise Exposure (Outdoor) Ldn or CNEL, dB							
	50	55	60	65	70	75	80	85
Residential: Low-Density Single-Family, Duplex, Mobile Homes	Normally Acceptable	Conditionally Acceptable	Conditionally Acceptable	Conditionally Acceptable	Generally Unacceptable	Generally Unacceptable	Land Use Discouraged	Land Use Discouraged
Residential: Multiple Family	Normally Acceptable	Conditionally Acceptable	Conditionally Acceptable	Conditionally Acceptable	Generally Unacceptable	Generally Unacceptable	Land Use Discouraged	Land Use Discouraged
Transient Lodging: Motels, Hotels	Normally Acceptable	Normally Acceptable	Conditionally Acceptable	Conditionally Acceptable	Conditionally Acceptable	Conditionally Acceptable	Land Use Discouraged	Land Use Discouraged
Schools, Libraries, Churches, Hospitals, Nursing Homes	Normally Acceptable	Conditionally Acceptable	Conditionally Acceptable	Conditionally Acceptable	Conditionally Acceptable	Conditionally Acceptable	Land Use Discouraged	Land Use Discouraged
Auditoriums, Concert Halls, Amphitheaters	Conditionally Acceptable	Conditionally Acceptable	Conditionally Acceptable	Conditionally Acceptable	Conditionally Acceptable	Land Use Discouraged	Land Use Discouraged	Land Use Discouraged
Sports Arena, Outdoor Spectator Sports	Conditionally Acceptable	Conditionally Acceptable	Conditionally Acceptable	Conditionally Acceptable	Conditionally Acceptable	Conditionally Acceptable	Land Use Discouraged	Land Use Discouraged
Playgrounds, Neighborhood Parks	Normally Acceptable	Normally Acceptable	Normally Acceptable	Normally Acceptable	Conditionally Acceptable	Conditionally Acceptable	Land Use Discouraged	Land Use Discouraged
Golf Courses, Riding Stables, Water Recreation, Cemeteries	Normally Acceptable	Normally Acceptable	Normally Acceptable	Normally Acceptable	Normally Acceptable	Conditionally Acceptable	Conditionally Acceptable	Land Use Discouraged
Office Buildings, Business Commercial and Professional	Normally Acceptable	Normally Acceptable	Normally Acceptable	Normally Acceptable	Conditionally Acceptable	Conditionally Acceptable	Conditionally Acceptable	Land Use Discouraged
Industrial, Manufacturing, Utilities, Agriculture	Normally Acceptable	Normally Acceptable	Normally Acceptable	Normally Acceptable	Normally Acceptable	Conditionally Acceptable	Conditionally Acceptable	Land Use Discouraged

<p> Normally Acceptable</p> <p> Conditionally Acceptable</p> <p> Generally Unacceptable</p> <p> Land Use Discouraged</p>	<p>Specified land use is satisfactory, based upon the assumption that any buildings involved are of normal conventional construction, without any special noise insulation requirements.</p> <p>New construction or development should be undertaken only after a detailed analysis of the noise reduction requirement is made and needed noise insulation features included in the design. Conventional construction, but with closed windows and fresh air supply systems or air conditioning will normally suffice.</p> <p>New construction or development should generally be discouraged. If new construction or development does proceed, a detailed analysis of the noise reduction requirements must be made and needed noise insulation features included in the design.</p> <p>New construction or development should generally not be undertaken.</p>
--	--

2. GOALS AND POLICIES

HEALTH AND SAFETY

Economic Development Implementation Programs		2021 -2025	2025-2030	Annual	Ongoing
ED-A.A The County shall allocate resources to support the County’s economic development implementation programs. <i>(SO)</i>					
Implements Which Policy(ies)	ED-A.2 and ED-A.3				✓
Responsible Department(s)	Board of Supervisors County Administrative Officer				
ED-A.B The County shall collaborate with the Fresno Council of Governments and existing food, fiber, and agricultural product processing firms to assess the current state of regional and intermodal transportation infrastructure, the needs for the future, and the role of the County and other agencies in facilitating infrastructure development. <i>(PSR/IGC/JP)</i>		✓			
Implements Which Policy(ies)	ED-A.18				
Responsible Department(s)	Board of Supervisors County Administrative Officer Department of Public Works and Planning				
ED-C.A The County shall continue to work with regional workforce training organizations, community colleges, vocational centers, and others to promote and maintain the existing countywide workforce preparation system. <i>(IGC/JP)</i>					✓
Implements Which Policy(ies)	ED-C.1, ED-C.3, and ED-C.4				
Responsible Department(s)	Workforce Investment Board Department of Employment & Temporary Assistance/Adult Services				
ED-C.B The County shall provide skills inventory information on the CalWORKs labor pool, upon request, for local expansion and new businesses seeking employees. <i>(PI)</i>					✓
Implements Which Policy(ies)	ED-C.1 and ED-C.4				
Responsible Department(s)	Department of Employment & Temporary Assistance/Adult Services				
ED-C.C The County shall continue to improve and maintain tracking systems for employment and retention for CalWORKs recipients. <i>(SO/PSR)</i>					✓
Implements Which Policy(ies)	ED-C.1 and ED-C.4				
Responsible Department(s)	Department of Employment & Temporary Assistance/Adult Services				
ED-C.D The County shall continue efforts to assist placement agencies and businesses in hiring CalWORKs recipients who match required skill sets and are in need of employment. <i>(SO/IGC/JP)</i>					✓



FRESNO COUNTY GENERAL PLAN

Economic Development Implementation Programs		2021 -2025	2025-2030	Annual	Ongoing
Implements Which Policy(ies)	ED-C.1 and ED-C.4				
Responsible Department(s)	Department of Employment & Temporary Assistance/Adult Services				
ED-C.E	The County shall continue its collaborative planning and funding efforts with agencies such as the Fresno County Office of Education, State Economic Development Department (EDD), local school districts, post secondary educational institutions, training agencies, vocational centers, and the cities. Such efforts may include education management services, employment placement services, retention services, youth employment programs, Jobs 2000 services, and career information. <i>(SO/FB/IGC/JP/PI)</i>				✓
Implements Which Policy(ies)	ED-C.1 and ED-C.2				
Responsible Department(s)	Department of Social Services				
ED-C.F	The County shall continue to work with regional workforce training organizations to provide the necessary training in the skills required by the clusters and industries targeted for expansion, attraction, and new enterprise development. <i>(IGC/JP/SO)</i>				✓
Implements Which Policy(ies)	ED-C.3				
Responsible Department(s)	Workforce Investment Board				

Agriculture and Land Use Implementation Programs		2021-2025	2025-2030	Annual	Ongoing
LU-A.A	The County shall review and amend its Zoning and Subdivision Ordinances to ensure consistency with policies and standards of this section.	✓			
Implements Which Policy(ies)	LUA.1 through LU-A.21				
Responsible Department(s)	Department of Public Works and Planning				
LU-A.B	<p>During the develop review process, the County shall evaluate and incorporate all practical buffers for new non-agricultural uses proposed in agricultural areas of the county. Buffer design and maintenance guidelines shall include, but not be limited to, the following:</p> <ul style="list-style-type: none"> a) Buffers shall be physically and biologically designed to avoid conflicts between agriculture and non-agricultural uses. b) Buffers shall be located on the parcel for which a permit is sought and shall protect the maximum amount of farmable land. c) Buffers generally shall consist of a physical separation between agricultural and non-agricultural uses. The appropriate width shall be determined on a site-by-site basis taking into account the type of existing agricultural uses, the nature of the proposed development, the natural features of the site, and any other factors that affect the specific situation. d) Appropriate types of land uses for buffers include compatible agriculture, open space and recreational uses such as parks and golf courses, industrial uses, and cemeteries. e) The County may condition its approval of a project on the ongoing maintenance of buffers. f) A homeowners association or other appropriate entity shall be required to maintain buffers to control litter, fire hazards, pests, and other maintenance problems. g) Buffer restrictions may be removed if agricultural uses on all adjacent parcels have permanently ceased. <i>(RDR/PSP)</i> 				✓
Implements Which Policy(ies)	LU-A.13				
Responsible Department(s)	Department of Public Works and Planning				



FRESNO COUNTY GENERAL PLAN

Agriculture and Land Use Implementation Programs		2021-2025	2025-2030	Annual	Ongoing
LU-A.C The County shall continue to implement the County’s Right-to-Farm Ordinance, and provide information to the local real estate industry to help make the public aware of the right-to-farm provisions in their area. <i>(RDR/JP/PI)</i>					✓
Implements Which Policy(ies)	LU-A.15				
Responsible Department(s)	Department of Agriculture				
LU-A.D The County shall periodically review agricultural land preservation programs and assess their effectiveness in furthering the County's agricultural goals and policies. <i>(PSP)</i>					✓
Implements Which Policy(ies)	LU-A.16				
Responsible Department(s)	Department of Public Works and Planning				
LU-A.E The County should assist interested farmers and ranchers in obtaining grants under provisions of the California Farmland Conservancy Program for conservation easements. <i>(PSP/FB)</i>					✓
Implements Which Policy(ies)	LU-A.16				
Responsible Department(s)	Department of Public Works and Planning				
LU-A.F The County, in cooperation with UC Cooperative Extension, resource conservation districts, and other industry agencies, should develop and implement a public outreach program to inform agriculturalists and the public of the advantages of participation in land trust agreements, conservation easements, dedication incentives, Williamson Act contracts, Farmland Security Act contracts, and the California Farmland Conservancy. <i>(IGC/JP/PI)</i>			✓		✓
Implements Which Policy(ies)	LU-A.16 and LU-A.17				
Responsible Department(s)	Department of Public Works and Planning				
LU-A.G The County shall maintain an inventory of lot size exceptions granted by discretionary permit. This inventory, including number of exceptions, size of the lots, and their location, shall be presented to the Board of Supervisors during the annual review of the General Plan. <i>(PSR)</i>		✓		✓	✓

Agriculture and Land Use Implementation Programs		2021-2025	2025-2030	Annual	Ongoing
Implements Which Policy(ies)	LU-A.9, LU-A.10, LU-A.11, LU-B.8, and LU-B.7, LU-B.9, and LU-B.10				
Responsible Department(s)	Department of Public Works and Planning				
LU-C.A	As funding become available, the County will update and maintain the Kings River Regional Plan to guide County decision-making concerning land use and environmental quality within the Kings River influence area. (<i>PSP</i>)				✓
Implements Which Policy(ies)	LU-C.1, LU-C.11, LU-C.12, and OS-H.9				
Responsible Department(s)	Board of Supervisors Department of Public Works and Planning				
LU-C.B	The County shall continue to work with the San Joaquin River Parkway and Conservation Trust, San Joaquin River Conservancy, City of Fresno, and other interested agencies and organizations to implement the San Joaquin River Parkway Master Plan. (<i>RDR/IGC</i>)				✓
Implements Which Policy(ies)	LU-C.2, LU-C.6, LU-C.8, LU-C.9, LU-C.10, OS-H.10, OS-H.11, and OS-H.12				
Responsible Department(s)	Board of Supervisors Department of Public Works and Planning				
LU-F.A	The County shall work with the Cities of Clovis and Fresno and other cities as appropriate to encourage adoption of incentives and disincentives that lead to compact urban development and infill of vacant and under-utilized land. (<i>RDR/IGC</i>)				✓
Implements Which Policy(ies)	LU-F.1 through LU-F.11 and LU-F.14				
Responsible Department(s)	Board of Supervisors				
LU-F.B	The County shall review its Zoning Ordinance and Subdivision Ordinance to incorporate amendments that will implement the policies for pedestrian and transit-oriented development. (<i>RDR</i>)				✓
Implements Which Policy(ies)	LU-F.1 through LU-F.11				
Responsible Department(s)	Board of Supervisors				
LU-G.A	The County shall review and revise, as appropriate, its Zoning Ordinance to facilitate moderate increases in density of housing in unincorporated urban communities. (<i>RDR</i>)				✓
Implements Which Policy(ies)	LU-G.19 through LU-G.21 and LU-F.14				
Responsible Department(s)	Department of Public Works and Planning				
LU-G.B	The County shall review all annexation proposals submitted to the Local Agency Formation Commission (LAFCO) and prepare a				✓



FRESNO COUNTY GENERAL PLAN

Agriculture and Land Use Implementation Programs		2021-2025	2025-2030	Annual	Ongoing
<p>recommendation to LAFCO for each proposal. The County shall formally protest when the annexation is inconsistent with a city’s adopted general plan or with the County’s General Plan, or with the standards of annexation which is included in the memorandum of understanding between the County and the cities within the county. (RDR/SO/IGC)</p>					
Implements Which Policy(ies)	LU-G.1 through LU-G. 16				
Responsible Department(s)	Department of Public Works and Planning Board of Supervisors				
LU-H.A	<p>The Planning Commission shall review the General Plan annually, focusing principally on actions undertaken in the previous year to carry out the implementation programs of the plan. The Planning Commission’s report to the Board of Supervisors shall include, as the Commission deems appropriate, recommendations for amendments to the General Plan. (RDR/PSR)</p>			✓	✓
Implements Which Policy(ies)	LU-H.14				
Responsible Department(s)	Planning Commission Board of Supervisors Department of Public Works and Planning				

Transportation and Circulation Implementation Programs		2021-2025	2025-2030	Annual	Ongoing
TR-A.A	The County shall update and maintain the Improvement Standards for other County development improvements, including private roads dedicated to public use. <i>(RDR)</i>	✓			
Implements Which Policy(ies)	TR-A.1				
Responsible Department(s)	Department of Public Works and Planning				
TR-A.B	The County shall prepare and adopt a priority list of street and highway improvements for the Road Improvement Program (RIP) based on a horizon of at least five (5) years. The Board of Supervisors shall update the RIP every year based on the recommendation of the Department of Public Works and Planning. The RIP shall program maintenance and rehabilitation, reconstruction, capacity, operational, safety improvements, and specific plan lines on a prioritized basis. <i>(PSP)</i>			✓	
Implements Which Policy(ies)	TR-A.4 and TR-A.13				
Responsible Department(s)	Department of Public Works and Planning Board of Supervisors				
TR-A.C	The County shall coordinate its transportation planning with the Fresno Council of Governments, Caltrans, cities within the county, and adjacent jurisdictions. <i>(IGC)</i>				✓
Implements Which Policy(ies)	TR-A.7 and TR-A.8				
Responsible Department(s)	Department of Public Works and Planning				
TR-A.D	The County shall consider adopting a traffic impact fee ordinance for areas outside the spheres of influence of cities in the county. The traffic fees should be designed to achieve the adopted LOS and preserve structural integrity based on a twenty (20) year time horizon. The traffic mitigation fees should be updated at least every five years, or concurrently with the approval of any significant modification of the land use allocation used to develop the fees. The County shall require new development within the spheres of influence of cities in the county to pay the traffic impact fees of those cities. <i>(RDR/FB)</i>		✓		✓
Implements Which Policy(ies)	TR-A.9				
Responsible Department(s)	Department of Public Works and Planning Board of Supervisors				



FRESNO COUNTY GENERAL PLAN

Transportation and Circulation Implementation Programs		2021-2025	2025-2030	Annual	Ongoing
TR-A.E	The County shall continue to identify and pursue appropriate new funding sources for transportation improvements. Grant funds from regional, State, and Federal agencies should be pursued and utilized when compatible with the General Plan policies and long-term local funding capabilities. <i>(FB)</i>				✓
Implements Which Policy(ies)	TR-A.11, TR-A.12, and TR-A.13				
Responsible Department(s)	Department of Public Works and Planning				
TR-A.F	The County shall prepare Complete Streets Design Guidelines and update the them every five years. <i>(RDR)</i>		✓		✓
Implements Which Policy(ies)	TR-A.14 and TR-A.15				
Responsible Department(s)	Department of Public Works and Planning				
TR-B.A	The County shall work with the Fresno Council of Governments (FCOG) and transit providers in the county to periodically review and update the short-range transit plans in the county. <i>(IGC)</i>				✓
Implements Which Policy(ies)	TR-B.1				
Responsible Department(s)	Department of Public Works and Planning				
TR-B.B	The County shall encourage transit providers and FCOG to prepare, adopt, and implement a long-range strategic transit master plan for the county or subareas of the county. The master plan shall review the transit corridors in this Policy Document and designate a set of transit corridors so that appropriate planning can be concentrated on these corridors. The plan(s) shall be reviewed and updated on a regular basis. <i>(IGC)</i>				✓
Implements Which Policy(ies)	TR-B.1				
Responsible Department(s)	Department of Public Works and Planning				
TR-B.C	The County shall work with Caltrans and other agencies to determine the need for additional or expanded park-and-ride lots and to identify additional sites for such lots. <i>(PSR/IGC)</i>				✓
Implements Which Policy(ies)	TR-B.2				
Responsible Department(s)	Department of Public Works and Planning				
TR-B.D	The County shall work with the FCOG and other agencies to identify right-of-way needs within designated transit corridors and to acquire needed rights-of-way, including abandoned rights-of-way and track structures. <i>(PSR/IGC)</i>				✓
Implements Which Policy(ies)	TR-B.3				
Responsible Department(s)	Department of Public Works and Planning				

Transportation and Circulation Implementation Programs		2021-2025	2025-2030	Annual	Ongoing
TR-B.E	The County shall work with the cities in the county to prepare and adopt land use and design standards for areas within designated urban transit corridors to promote transit accessibility and use. <i>(RDR/IGC)</i>	✓			
Implements Which Policy(ies)	TR-B.3				
Responsible Department(s)	Department of Public Works and Planning				
TR-B.F	The County shall work with FCOG and FCRTA (a joint powers agency) to identify and pursue funding for transit. <i>(FB/IGC)</i>				✓
Implements Which Policy(ies)	TR-B.4				
Responsible Department(s)	Department of Public Works and Planning				
TR-D.A	The County shall continue to identify and pursue appropriate new funding sources for bikeway implementation. Grant funds from regional, State, and Federal agencies should be pursued and used when compatible with the General Plan policies and long-term local funding capabilities. <i>(FB)</i>				✓
Implements Which Policy(ies)	TR-D.1				
Responsible Department(s)	Department of Public Works and Planning				
TR-D.B	The County shall require that sufficient pavement width for bikeways shown on the Regional Bikeway Plan be constructed in conjunction with road construction projects, and that adequate right-of-way and/or pavement width for bicycle facilities be included in frontage improvements required of new development. Implementation through signing and striping is an operational decision, and may not coincide with initial construction. <i>(RDR)</i>				✓
Implements Which Policy(ies)	TR-D.4 and TR-D.5				
Responsible Department(s)	Department of Public Works and Planning				
TR-D.C	The County shall use California Department of Transportation (Caltrans) or American Association of State Highway and Transportation Officials (AASHTO) standards as guidelines for construction of Class I, II, III bicycle facilities. <i>(RDR/SO)</i>				✓
Implements Which Policy(ies)	TR-D.1, TR-D.3, TR-D.4, and TR-D.5				
Responsible Department(s)	Department of Public Works and Planning				
TR-D.D	The County shall work with other agencies to provide facilities that help link bicycles to other modes of transportation, including provision of bike racks or space on buses and parking or lockers for bicycles at transportation terminals. <i>(RDR/IGC)</i>				✓



FRESNO COUNTY GENERAL PLAN

Transportation and Circulation Implementation Programs		2021-2025	2025-2030	Annual	Ongoing
Implements Which Policy(ies)	TR-D.8				
Responsible Department(s)	Department of Public Works and Planning				
TR-D.E	The County shall periodically review and update the Regional Bicycle and Recreational Trails Master Plan. <i>(RDR)</i>				✓
Implements Which Policy(ies)	TR-D.9				
Responsible Department(s)	Department of Public Works and Planning				
TR-E.A	The County shall use appropriate zoning and work with other agencies to plan line-designated railroad corridors to facilitate the preservation of important railroad rights-of-way for future rail expansion or other appropriate transportation facilities. <i>(RDR)</i>				✓
Implements Which Policy(ies)	TR-E.3 and TR-E.4				
Responsible Department(s)	Department of Public Works and Planning				
TR-E.B	The County shall participate in the Council of Fresno County Governments Rail Committee to support improvement, development, and expansion of rail service in Fresno County. <i>(IGC)</i>				✓
Implements Which Policy(ies)	TR-E.1 through TR-E.6				
Responsible Department(s)	Department of Public Works and Planning				

Public Facilities and Service Implementation Programs		2021-2025	2025-2030	Annual	Ongoing
PF-C.A	The County shall participate in Inter-Regional Water Management Plan (IRWMP) efforts with other regional partners to identify and implement projects and programs to improve water supply reliability and quality. <i>(IGC)</i>				✓
Implements Which Policy(ies)	PF-C.1 through PF-C.16				
Responsible Department(s)	County Office of Emergency Services Public Works and Planning				
PF-C.B	The County shall work with service providers to prepare or cause to be prepared water master plans for water delivery systems for development proposed in unincorporated communities. The County shall approve such plans prior to, or concurrently with, approval of the proposed development. <i>(RDR)</i>				✓
Implements Which Policy(ies)	PF-C.7				
Responsible Department(s)	Department of Public Works and Planning				
PF-C.C	The County shall prepare a Water Conservation Ordinance that includes water conservation technologies, methods, and practices to maximize the beneficial use of water resources. The County shall review and update the ordinance periodically to eliminate practices that no longer prove beneficial and add new technologies that become available. <i>(RDR)</i>	✓			✓
Implements Which Policy(ies)	PF-C.23 through PF-C.28				
Responsible Department(s)	Department of Public Works and Planning				
PF-C.D	The County shall assess the need for, and suitability of, a tiered water pricing structure for specific County Service Areas and Waterworks Districts on an as needed basis. <i>(FB/SO)</i>		✓		
Implements Which Policy(ies)	PF-C.27				
Responsible Department(s)	Department of Public Works and Planning				
PF-C.E	The County shall adopt cost-effective urban best water conservation management practices, consistent with the intent of the California Urban Water Agencies, advisories, California Department of Water Resources, or similar authoritative agencies or organizations. <i>(PSP)</i>		✓		✓
Implements Which Policy(ies)	PF-C.28				
Responsible Department(s)	Department of Public Works and Planning				



FRESNO COUNTY GENERAL PLAN

Public Facilities and Service Implementation Programs		2021-2025	2025-2030	Annual	Ongoing
PF-D.A	The County shall work with service providers to prepare, or cause to be prepared, sewer master plans for wastewater treatment facilities for development proposed in unincorporated communities. The County shall approve such plans prior to or concurrently with approval of the proposed development. <i>(PSP)</i>				✓
Implements Which Policy(ies)	PF-D.7				
Responsible Department(s)	Department of Public Works and Planning				
PF-E.A	The County shall work with responsible flood control agencies to pursue adoption of appropriate regulations and programs as necessary and appropriate to implement required actions under State and Federal stormwater quality programs. <i>(RDR/PSP/IGC)</i>				✓
Implements Which Policy(ies)	PF-E.1				
Responsible Department(s)	Department of Public Works and Planning Board of Supervisors				
PF-F.A	The County shall require new commercial, industrial, and multi-family residential uses to provide adequate areas on-site to accommodate the collection and storage of recyclable materials.				✓
Implements Which Policy(ies)	PF-F.1 and PF-F.2				
Responsible Department(s)	Department of Public Works and Planning				
PF-H.A	The County shall work with the California Department of Forestry and Fire Protection, local fire protection agencies, and city fire departments to maximize the use of resources to develop functional and/or operational consolidations and standardization of services and to maximize the efficient use of fire protection resources. <i>(IGC)</i>				✓
Implements Which Policy(ies)	PF-H.1 and PF-H.2				
Responsible Department(s)	County Administrative Officer				
PF-I.A	The County shall coordinate the updating of regional, community, and specific plans necessitated by the General Plan with applicable school districts to identify the need for and potential location of new or expanded school facilities. <i>(PSP/IGC)</i>				✓
Implements Which Policy(ies)	PF-I.3, PF-I.4, and PF-I.5				
Responsible Department(s)	Department of Public Works and Planning				

Public Facilities and Service Implementation Programs		2021-2025	2025-2030	Annual	Ongoing
PF-I.B	The County shall coordinate the updating of regional, community, and specific plans with applicable library districts and library interest groups to identify the need for and potential location of new or expanded library facilities. The Library Master Facility Plan shall be used as part of this process. <i>(PSP/IGC)</i>				✓
Implements Which Policy(ies)	PF-I.9				
Responsible Department(s)	Department of Public Works and Planning County Library				



FRESNO COUNTY GENERAL PLAN

Open Space and Conservation Implementation Programs		2021-2025	2025-2030	Annual	Ongoing
OS-A.A	The County shall coordinate with Groundwater Sustainability Agencies and other water resource management agencies to identify and protect lands sustainable for groundwater recharge. <i>(PSP)</i>	✓			✓
Implements Which Policy(ies)	OS-A.6, OS-A.7, OS-A.8, and OS-A.10				
Responsible Department(s)	Department of Public Works and Planning				
OS-B.A	The County, in consultation with the California Department of Forestry and Fire Protection, shall conduct an evaluation of the Forest Practice Rules with regard to: clearcutting and other forest management practices with potential visual impacts; use of prescribed burning; protection of biological, soil, and water resources; and protection of old growth forest in Fresno County. If the Forest Practice Rules are determined to be inadequate, a compilation of Special Forest Practice Rules for Fresno County shall be proposed to the Board of Forestry to address those inadequacies. <i>(IGC)</i>		✓		
Implements Which Policy(ies)	OS-B.2 OS-B.3, OS-B.3, OS-B.4, and OS-B.6				
Responsible Department(s)	Department of Public Works and Planning				
OS-B.B	The County shall encourage the California Department of Forestry and Fire Protection to complete an inventory, including the condition, of existing and residual stands of ancient and old growth forest on private timberlands in Fresno County. The results of this inventory shall be incorporated into the County’s biological resources database for use in future land use planning decisions. <i>(PSR/IGC)</i>	✓			✓
Implements Which Policy(ies)	OS-B.2				
Responsible Department(s)	Department of Public Works and Planning				
OS-B.C	The County shall participate in U.S. Forest Service management plan development and encourage the U.S. Forest Service and the California Department of Forestry and Fire Protection to address multiple forest management goals supporting healthy forests, habitat, watershed, fuels reduction, special management of old growth forest and other unique biotic or geologic features, and economic and recreational uses of forest resources. <i>(IGC)</i>				✓
Implements Which Policy(ies)	OS-B.2				
Responsible Department(s)	Department of Public Works and Planning				

Open Space and Conservation Implementation Programs		2021-2025	2025-2030	Annual	Ongoing
OS-B.D	The County shall encourage the California Department of Forestry and Fire Protection to include educational materials for residents in its Notice of Intent to Harvest Timber. Such materials should include information concerning the Forest Practice Act, Forest Practice Rules, and Department of Forestry and Fire Protection Timber Harvest Plan review process. <i>(IGC)</i>				✓
Implements Which Policy(ies)	OS-B.2 and OS-B.3				
Responsible Department(s)	Department of Public Works and Planning				
OS-D.A	The County shall work toward the acquisition by public agencies or private non-profit conservation organizations of creek corridors, wetlands, and areas rich in wildlife or of a fragile ecological nature as public open space where such areas cannot be effectively preserved through the regulatory process. Such protection may take the form of fee acquisition or protective easements and may be carried out in cooperation with other local, State, and Federal agencies and private entities. Acquisition shall include provisions for maintenance and management in perpetuity. <i>(IGC/JP)</i>				✓
Implements Which Policy(ies)	OS-D.2 and OS-D.8				
Responsible Department(s)	Department of Public Works and Planning				
OS-F.A	The County shall make the Fresno County Oak Management Guidelines and other educational resources available to landowners located in oak woodland habitat. <i>(PI)</i>				✓
Implements Which Policy(ies)	OS-F.11				
Responsible Department(s)	Department of Public Works and Planning				
OS-G.A	The County shall work cooperatively with the SJVAPCD to review their published Guide for Assessing and Mitigating Air Quality Impacts and consider the feasibility to adopt procedures for performing air quality impact analysis and mitigation measures with any modifications deemed appropriate. <i>(RDR/PSP)</i>	✓			
Implements Which Policy(ies)	OS-G.1				
Responsible Department(s)	Department of Public Works and Planning				
OS-G.B	The County shall continue to implement programs to reduce its employees' work-related vehicular trips. <i>(PSP/SO)</i>				✓
Implements Which Policy(ies)	OS-G.6 and OS-G.7				



FRESNO COUNTY GENERAL PLAN

Open Space and Conservation Implementation Programs		2021-2025	2025-2030	Annual	Ongoing
Responsible Department(s)	County Administrative Officers Department of Public Works and Planning				
OS-G.C	The County shall amend its Subdivision and Grading Ordinances and Development Standards to address dust control measures for new development, access roads, and parking areas. <i>(RDR)</i>	✓			
Implements Which Policy(ies)	OS-G.12 and OS-G.14				
Responsible Department(s)	Department of Public Works and Planning				
OS-H.A	The County shall work with local, State, and Federal agencies to complete a comprehensive inventory of all County owned parks and recreation areas and services in the county and to identify other areas suitable for potential park acquisition and development as funds permit. The County shall consider preparation of a County park and recreation master plan to provide a policy framework for independent implementation by the cooperating agencies. <i>(PSR)</i>	✓	✓		
Implements Which Policy(ies)	OS-H.1 through OS-H.3				
Responsible Department(s)	Department of Public Works and Planning				
OS-H.B	As new development occurs, the County shall consider contracting with existing entities that have the authority to receive dedications or grants of land or funds, plus the ability to charge fees for acquisition, development, and maintenance of parks, open space, and riding, hiking, and bicycle trails. <i>(FB/SO)</i>				✓
Implements Which Policy(ies)	OS-H.4				
Responsible Department(s)	Department of Public Works and Planning				
OS-J.A	The County shall prepare and maintain, using a GIS database, an inventory of historical sites, buildings, and landmarks. <i>(PSR)</i>		✓		
Implements Which Policy(ies)	OS-J.7				
Responsible Department(s)	Fresno County Historic Landmarks and Records Commission				
OS-L.A	The County shall work with Caltrans to apply for scenic highway designation for the State highway segments eligible for such designation, and take necessary steps for approval, including adoption of scenic corridor protection programs for eligible segments. <i>(PSP/IGC)</i>				✓
Implements Which Policy(ies)	OS-L.9				

Open Space and Conservation Implementation Programs		2021-2025	2025-2030	Annual	Ongoing
Responsible Department(s)	Department of Public Works and Planning				



FRESNO COUNTY GENERAL PLAN

Health and Safety Implementation Programs		2021 - 2025	2025 - 2030	Annual	Ongoing
HS-A.A In coordination with cities, special districts, and State and Federal agencies, the County shall review and update regularly the Fresno County Multi-Jurisdictional Hazard Mitigation Plan. (<i>IGC</i>)					
Implements Which Policy(ies)	HS-A.1 and HS-A.2				
Responsible Department(s)	County Office of Emergency Services Sheriff's Office County Administrative Officer Public Works and Planning Department CalFire/Fresno Co. Fire District Local Fire Agencies and Special Districts				✓
HS-A.B The County shall continue to monitor and periodically evaluate County emergency planning, operations, and training capabilities. The County shall support post disaster response efforts that are targeted toward the most vulnerable populations by developing culturally sensitive responses, including language access services, communications, and other support services. (<i>PSP</i>)					
Implements Which Policy(ies)	HS-A.1, HS-A.5				
Responsible Department(s)	County Office of Emergency Services				✓
HS-A.C The County shall continue to review actions in the Fresno County Multi-Jurisdictional Hazard Mitigation Plan on an annual basis to be considered for annual FEMA Pre-Disaster Mitigation grant allocations or after a presidential disaster declaration in California for Hazard Mitigation Grant Program funding as well as for other local, state, and federal funding opportunities.					
Implements Which Policy(ies)	HS-A.2			✓	
Responsible Department(s)	County Office of Emergency Services Sheriff's Office County Administrative Officer Public Works and Planning Department County Fire District				
HS-A.D The County shall continue to periodically evaluate County-owned safety and emergency management facilities and public utility systems for susceptibility to damage due to flood inundation, seismic or geologic hazards, or wildfire hazards and implement corrective actions should problems be identified. (<i>SO</i>)					
Implements Which Policy(ies)	HS-A.3, HS-A.5, HS-A.6, and HS-A.8				
Responsible Department(s)	Department of Public Works and Planning County Office of Emergency Services				✓

Health and Safety Implementation Programs		2021 - 2025	2025 - 2030	Annual	Ongoing
HS-A.E	The County shall research available funding sources to provide sustainable backup power sources for critical facilities in the event of a power outage triggered by a climate event.				
Implements Which Policy(ies)	HS-A.11				
Responsible Department(s)	Department of Public Works and Planning				
HS-A.F	The County shall continue to conduct programs to inform the general public of emergency preparedness and disaster response procedures. Programs shall be developed to reach the most vulnerable populations in the County. (PI)				✓
Implements Which Policy(ies)	HS-A.6, HS-G.10, and HS-G.11				
Responsible Department(s)	County Office of Emergency Services				
HS-A.F	The County shall continue to support standardized informational and telecommunications systems among local, regional, State and Federal agencies to provide for better interoperability.				
Implements Which Policy(ies)	HS-A.5, HS-A.6, and HS-B.24				✓
Responsible Department(s)	County Office of Emergency Services Sheriff's Office County Administrative Officer Public Works Department County Fire District				
HS-A.G	The County shall identify residential developments in hazard areas that do not have at least two emergency evacuation routes and work with affected residents to help prepare them to anticipate their evacuation alternatives. As part of development review process, fire responders should evaluate applications for compliance with the Attorney General Wildfire Guidance from October 22, 2022, which states that new development should have adequate fire protection, including proximity to adequate emergency services, adequate provisions for fire flow and emergency vehicle access and fire hardened communication, including high speed internet service.				✓
Implements Which Policy(ies)	HS-A.8				
Responsible Department(s)	Department of Public Works and Planning County Office of Emergency Services Sherriff's Office				
HS-A.H	The County shall seek and secure funding to conduct near-term and long-term climate hazard assessment (such as for flooding and wildfire) for at- risk County facilities. The assessment shall identify adaptation or	✓	✓		



FRESNO COUNTY GENERAL PLAN

Health and Safety Implementation Programs		2021 - 2025	2025 - 2030	Annual	Ongoing
retirement plans for at-risk buildings and facilities, and prioritize necessary retrofits or upgrades based on the age, criticality, and vulnerability and need of the County facility.					
Implements Which Policy(ies)	HS-A.10 and HS-A.11				
Responsible Department(s)	County Fire District, Department of Public Works and Planning				
HS-B.A	In partnership with neighborhood- and community-based organizations, the County shall seek funding to establish a climate change education program that would inform residents and businesses about climate change preparedness and the benefits of improving homes and businesses to contemporary fire safe standards.	✓			
Implements Which Policy(ies)	HS-B.2				
Responsible Department(s)	County Fire District				
HS-B.B	To promote consistency with changing State Fire Code requirements, the County will update its County Code in accordance with State Fire Code revisions.				✓
Implements Which Policy(ies)	B.10, B.12				
Responsible Departments	Department of Public Works and Planning, County Fire District				
HS-B.C	The County shall update emergency planning documents, such as the Emergency Operations Plan, and procedures every 8 years in tandem with required Safety Element updates to minimize emergency response and evacuation challenges county-wide.				✓
Implements Which Policy(ies)	HS-B.20, HS-B.26, and HS-B.30				
Responsible Departments	Office of Emergency Services, Department of Public Works and Planning, County Fire District, Sheriff's Office				
HS-B.D	The County shall seek federal and/or state funding to support enforcement of defensible space and hardening standards to mitigate structure ignitions and reduce losses.				✓

Health and Safety Implementation Programs		2021 - 2025	2025 - 2030	Annual	Ongoing
Implements Which Policy(ies)	HS-B.2, HS-B.9, HS-B.10, HS-B.12, HS-B.17, HS-B.18, HS-B.21, HS-B.22, HS-B.23, HS-B.25, and HS-B.28				
Responsible Departments	County Fire District				
HS-B.E	As part of the application process, the County shall review proposed new and existing developments and ensure they have adequate emergency access, water supplies and provisions for fire suppression.				
Implements Which Policy(ies)	HS-B.6, HS-B.13, HS-B.14, HS-B.15, HS-B.17, HS-B.24, and HS-B.31				✓
Responsible Departments	Department of Public Works and Planning, County Fire District				
HS-B.F	The County shall continue to coordinate with CAL FIRE, the U.S. Forest Service, and neighboring jurisdictions on wildfire risk reduction activities in fire hazard severity zones in, wildland urban interface areas, and open spaces.				
Implements Which Policy(ies)	HS-B.3, HS-B.4, HS-B.8, HS-B.11, HS-B.16, HS-B.19, and HS-B.21				✓
Responsible Department(s)	County Fire District				
HS-C.A	The County shall prepare, maintain, and implement a Countywide Flood Emergency Plan that is consistent with the Fresno General Plan and city adopted general plans. The plan should be prepared in coordination with cities in Fresno County and address the requirements of Senate Bill 5. (PSR)			✓	
Implements Which Policy(ies)	HS-C.1				
Responsible Department(s)	Department of Public Works and Planning				
HS-C.B	The County shall with each revision of its Housing Element review and update as necessary the General Plan to include new flooding information not previously available, as required by with AB 162 (2007). (PSP)			✓	
Implements Which Policy(ies)	HS-C.8, HS-C.11, HS-C.12, and HS-C.14				
Responsible Department(s)	Department of Public Works and Planning				
HS-C.C	The County shall update and periodically review the Special Flood Hazard Areas provisions contained in the County Code to ensure				✓



FRESNO COUNTY GENERAL PLAN

Health and Safety Implementation Programs		2021 - 2025	2025 - 2030	Annual	Ongoing
adequate protection for structures located within identified flood zones. (PSR)					
Implements Which Policy(ies)	HS-C.2, HS-C.3, HS-C.5, HS-C-11, and HS-C.16				
Responsible Department(s)	Department of Public Works and Planning				
HS-C.D	The County shall establish development standards for new construction to reduce flooding. Standards should include minimizing paved areas or impervious surfaces, retaining large areas of undisturbed, naturally vegetated habitat to allow for water infiltration, and intermix areas of pavement with naturally vegetated infiltration sites to reduce the concentration of stormwater runoff from pavement and buildings.				
Implements Which Policy(ies)	HS-C.4				
Responsible Department(s)	Department of Public Works and Planning				
HS-C.E	The County shall, as part of the development review process, require that the design and location of dams and levees be in accordance with applicable design standards and specifications and accepted design and construction practices. The County shall ensure development applications are routed to the proper review agencies and departments to confirm design standards are met. (RDR/PSP)				
Implements Which Policy(ies)	HS-C.10				
Responsible Department(s)	Department of Public Works and Planning				
HS-C.E	The County shall develop, implement, and maintain a monitoring program to assess overall system capabilities.				✓
Implements Which Policy(ies)	HS-C.3, HS-C.8, and HS-C.9				
Responsible Department(s)	Department of Public Works and Planning				
HS-C.F	The County shall participate in the investigation and support the construction of water storage and banking facilities by other entities for the upper San Joaquin River Basin.				✓
Implements Which Policy(ies)	HS-C.6 and HS-C.7				
Responsible Department(s)	Department of Public Works and Planning				
HS-C.G	The County shall maintain flood hazard maps and other relevant floodplain data and shall revise or update this information as new information becomes available. In the County's review of applications for building permits and discretionary permits and proposals for capital				✓

Health and Safety Implementation Programs		2021 - 2025	2025 - 2030	Annual	Ongoing
improvement projects, the County shall determine whether the proposed project is within the 100-year floodplain based on these maps and shall encourage open space uses in flood zones. <i>(PSP/RDR)</i>					
Implements Which Policy(ies)	HS-C.17, HS-C.18, HS-C.15				
Responsible Department(s)	Department of Public Works and Planning				
HS-C.H	The County shall continue to develop and review relevant dam failure evacuation plans and continue to provide public information on dam failure preparedness. <i>(PSP)</i>				✓
Implements Which Policy(ies)	HS-C.19 and HS-C.20				
Responsible Department(s)	Office of Emergency Services Department of Public Works and Planning				
HS-D.A	The County shall regularly review readily available information published by the California Division of Mines and Geology and other agencies and use the information to update County maps and the General Plan Background Report. <i>(PSP/PSR)</i>				✓
Implements Which Policy(ies)	HS-D.1 and HS-D.2				
Responsible Department(s)	Department of Public Works and Planning				
HS-D.B	The County shall create and adopt a Geologic Hazards Checklist to be utilized during the development review process. <i>(PSP/PSR)</i>				
Implements Which Policy(ies)	HS-D.3, HS-D.4, HS-D.5, HS-D.6, HS-D.7, HS-D.8, HS-D.9, HS-D.10, HS-D.11, and HS-D.12				
Responsible Department(s)	Department of Public Works and Planning				
HS-E.A	The County shall refer to the Fresno County Airport Land Use Commission for review projects within the Airport Review Area requiring amendments of general plans, community and specific plans, airport master plans, rezoning applications, zoning ordinance text amendments, and building code amendments for consistency with the appropriate Airport Land Use Policy Plan. <i>(RDR/IGC)</i>				✓
Implements Which Policy(ies)	HS-E.1 and HS-E.3				
Responsible Department(s)	Department of Public Works and Planning Fresno County Airport Land Use Commission				
HS-E.B	The County shall, as part of the development review process, ensure that new development, including public infrastructure projects, does not create manmade safety hazards such as glare from direct or reflective				



FRESNO COUNTY GENERAL PLAN

Health and Safety Implementation Programs		2021 - 2025	2025 - 2030	Annual	Ongoing
sources, smoke, electrical interference, hazardous chemicals, or fuel storage in violation of adopted safety standards.					
Implements Which Policy(ies)	HS-E.2				
Responsible Department(s)	Department of Public Works and Planning				
HS-F.A The County shall continue to review discretionary uses which involve use of hazardous materials or generate hazardous wastes in regulated quantities. <i>(RDR)</i>					✓
Implements Which Policy(ies)	HS-F.1 and HS-F.2				
Responsible Department(s)	Department of Public Works and Planning Department of Public Health				
HS-F.B The County shall coordinate with the Regional Water Quality Control Board to review plans to mitigate soil or groundwater contamination for redevelopment or infill projects. <i>(IGC/RDR)</i>					✓
Implements Which Policy(ies)	HS-F.4 and HS-F.6				
Responsible Department(s)	Department of Public Works and Planning Department of Public Health				
HS-G.B The County shall support property owners in applying for and accessing financial assistance for eligible low-income individuals for constructing and retrofitting buildings to be more energy efficient and for the purchasing of low-carbon-emitting appliances. <i>(PSP/SO/PI)</i>			✓		
Implements Which Policy(ies)	HS-G.4				
Responsible Department(s)	Board of Supervisors County Administrative Officer				
HS-G.C The County shall coordinate with Cities to identify and map cooling centers in locations accessible to vulnerable populations and establish standardized temperature triggers for when they will be opened. <i>(PSP/SO/PI)</i>		✓			
Implements Which Policy(ies)	HS-G.5				
Responsible Department(s)	Department of Public Health				

Health and Safety Implementation Programs		2021 - 2025	2025 - 2030	Annual	Ongoing
HS-G.D	The County shall work with community based organizations to site immediate assistance and emergency shelter hubs in areas with high numbers of vulnerable populations and establish climate related triggers for opening the Immediate Assistance and Emergency Shelter Hubs (such as temperature thresholds and air quality thresholds). The following essential resources shall be made available at Immediate Assistance and Emergency Shelter Hubs: health programming and resources, food and water, refrigeration, charging stations, basic medical supplies, and other emergency supplies.				✓
Implements Which Policy(ies)	HS-G.6				
Responsible Department(s)	Department of Public Works and Planning Department of Public Health				
HS-G.E	The County shall identify corridors, particularly pedestrian pathways and bikeways that connect transit stations to nearby residential areas and public spaces, with the greatest need for shade and impermeable surfaces. Project implementation shall be prioritized in disadvantaged unincorporated communities.				
Implements Which Policy(ies)	HS-G.7				
Responsible Department(s)	Department of Public Works and Planning				
HS-G.F	The County shall work with the University of California Cooperative Extension and the Farm Bureau to develop an education and outreach campaign best suited to agricultural producers in the county, that increases field observation and monitoring and provides climate information services to agricultural producers in the County. Climate information services shall include early warnings systems for extreme weather events and estimates weather and climate impacts on crop and livestock operations.				
Implements Which Policy(ies)	HS-G.8				
Responsible Department(s)	Agricultural Commissioner				
HS-H.A	The County shall amend and enforce the Fresno County Noise Ordinance as necessary consistent with the policies and standards within this element. (RDR)		✓		
Implements Which Policy(ies)	HS-H.1 through HS-H.9				
Responsible Department(s)	Department of Public Health Sheriff's Department				
HS-H.B	The County shall develop an effective noise control program that includes:		✓		



FRESNO COUNTY GENERAL PLAN

Health and Safety Implementation Programs		2021 - 2025	2025 - 2030	Annual	Ongoing
<ul style="list-style-type: none"> a. An ordinance (1) defining acceptable noise levels based on land use, (2) setting forth monitoring methodology and determination of violations, (3) defining exemptions and variance procedures, and (4) delineating enforcement and abatement procedures; and b. A public information program to inform county residents of the impact of noise on their lives. <i>(RDR)</i> 					
Implements Which Policy(ies)	HS-H.5				
Responsible Department(s)	Department of Public Works and Planning Department of Public Health				

Environmental Justice Implementation Programs		2021 - 2025	2025 - 2030	Annual	Ongoing
EJ-A.A	During review of discretionary projects, the County shall ensure that adequate measures such as landscaping, buffers, and setbacks are in place to minimize project impacts on disadvantaged community residents. <i>(RDR)</i>				✓
Implements Which Policy(ies)	EJ-A.2				
Responsible Department(s)	Department of Public Works and Planning				
EJ -B.A	As part of review of proposed development projects in disadvantaged communities, the County shall work with developers of commercial outlets to locate such facilities near residential areas and provide bicycle parking racks on-site. <i>(RDR)</i>				✓
Implements Which Policy(ies)	EJ-B.1, EJ-B.2, and EJ-B.4				
Responsible Department(s)	Department of Public Works and Planning				
EJ -B.B	The County shall work with school districts and the Fresno Council and Governments (FCOG) to apply for Active Transportation grants where determined necessary. <i>(IGC)</i>				✓
Implements Which Policy(ies)	EJ-B.3				
Responsible Department(s)	Department of Public Works and Planning				
EJ-C.A	The County shall collaborate with Fresno County Rural Transit to maintain and/or identify new routes to healthcare facilities and shopping outlets that provide access to healthy foods, including fresh produce and proteins. <i>(IGC)</i>				✓
Implements Which Policy(ies)	EJ-C.1				
Responsible Department(s)	Department of Public Works and Planning				
EJ-D.A	The County shall utilize available notification techniques to convey information to community residents on projects that may affect their community and encourage their participation in the planning process and expressing their concerns to the decision makers. <i>(RDR, PI)</i>				✓
Implements Which Policy(ies)	EJ-D.1				
Responsible Department(s)	Department of Public Works and Planning				