

BATTALION 2:

OVERVIEW

The Desert Battalion boundary starts at the San Bernardino Unit/ Riverside County line in Morongo Valley, and runs north and west to the Los Angeles County Line in Pinon Hills along east/north side of the mountain range separating the High Desert from the Inland Empire. The battalion includes State Responsibility Area land (SRA) in and around the communities of Morongo Valley, Yucca Valley, Joshua Tree, Pioneertown, Flamingo Heights, Landers, Johnson Valley, Lucerne Valley, Apple Valley, Victorville, Hesperia, Summit Valley, Wrightwood, Phelan, and Pinon Hills. The Battalion extends from Highway 18 in the north, to the San Bernardino National Forest boundary in the south. The Battalion covers an approximate area of 600 square miles. In addition to CAL FIRE resources other fire departments providing mutual aid include the San Bernardino County Fire Department, Victorville Fire Department, United States Forest Service from the San Bernardino and Angeles National Forest, California Desert District of the Bureau of Land Management, Apple Valley Fire Protection District, National Park Service, and the Morongo Valley Community Services District Fire Department. During times of major fires in the Morongo Valley mutual aid has also been received from the 29-Palms Fire Department and the Marine Corps Air Ground Combat Center in Twenty-Nine Palms. It is also noteworthy that the City of Victorville is in the process of forming their own City run Fire Department that will about the SRA on its South and West borders.

The elevations in the battalion range from 2700 feet to 5700 feet, and is considered the “High Desert” with the presence of Joshua trees generally defining the boundaries of the Mojave Desert. Climatic temperatures range from the low teens to single digits in the winter with temperatures exceeding 105 during the summer months. Annual rainfall is less than 13 inches a year. Vegetation fuel types include annual grass, a variety of brush, juniper, Joshua trees, manzanita, timber and other drought resistant vegetation with low fuel moisture content making these species highly susceptible to, and capable of carrying fire, especially when fanned by the high winds typical to the desert.

There is a common boundary between California Department of Forestry & Fire Protection, San Bernardino Unit (CAL FIRE/BDU) and Los Angeles County Fire (LAC) which has developed the LABER Operating Plan. The purpose of this LABER Operating Plan is to enhance coordination of wildland fire ground operations, pre-designate areas, create a Unified Ordering Point, and radio frequencies. This plan creates a Unified Command Structure, dependent upon DPA and greatest threat to those agencies for all fire that fall with the affected areas.

Notable fires during the last decade include the North Fire in 2015 burning 4250 acres near I-15 and south of Oak Hills. In 2016, the Pilot Fire burned 8110 acres in the Summit Valley area and the Blue Cut Fire burned 36,274 acres in the West Cajon Valley, Phelan and Oak Hills communities.

During peak staffing levels the Desert Battalion staffs five fire engines at four fire stations spread across the battalion with locations in Yucca Valley, Lucerne Valley, Apple Valley and Phelan. The United States Forest Service also staffs one fire engine at CAL FIRE’s Lucerne fire station. The total CAL FIRE personnel vary from 40 fire suppression personnel during peak staffing to 11 personnel during the low fire danger period of the winter months when typically, only the Phelan fire station remains open. The urban interface areas spanning across the battalion presents a major concern and challenge to fire personnel when defending structures from wildland fire. An active program for conducting inspections by company officers helps the home and business owners to be compliant with the requirements set forth in section 4291 of the Public Resources Code

Communities at Risk listed by the California Fire Alliance (*see reference below) within the desert battalion include Morongo Valley, Pioneertown, Joshua Tree and Yucca Valley in the southern half of the battalion, and Pinon Hills, Phelan Wrightwood, Cajon (west Cajon Valley) and Summit Valley at the north end of the battalion.

* Reference http://www.cafirealliance.org/communities_at_risk

PRIORITIES:

A. 4291 Public Resources Code Inspections

1. Identify high risk areas based on fuel load, road access, and inspection compliance history to identify areas of focused inspections for each Battalion.
 - Conduct inspections
 - Provide educational material to stakeholders and property owners.
 - Non-compliance on 3rd inspection results in legal action (citation).

This on-going project will hold stakeholders responsible for meeting the requirements of 4291 as defined in the Public Resources Code. It will also increase the chance of a favorable outcome in the event of wildfire, and provide defensible space for fire suppression personnel to work, while increasing the margin of safety for firefighters and equipment.

B. Public Education –

1. Debris Burning
 - Provide education material to permit holders for debris burning.
 - All project areas will be pre-inspected prior to issuance of a burn permit.
 - Aggressive law enforcement (citation) for burning without a permit.
 - Aggressively seek cost recovery when fire has escaped the project area requiring fire suppression action.
2. Use of Equipment
 - Reduce fires caused using equipment.
 - 1) Provide Public Education and information.
 - 2) Aggressively seek cost recovery when fire has escaped the project area requiring fire suppression action.

Lack of knowledge of the specific laws related to open burning and Use of Equipment is often cited by violators as the reason for debris burning violations. Fire Safety and Disaster Preparedness Public Venues for educating the public will be utilized at every opportunity

3. Juvenile Fire Safety
 - Reduce fires caused by juveniles
 - Provide fire prevention educational material to school classrooms.
4. Organized Venues for Public Education within the Desert Battalion.
 - Wrightwood Wildfire and Disaster Awareness Day
 - San Bernardino County Fair, Victorville
 - Grubstakes Day, Yucca Valley

increase its output of PSA's and news releases regarding the laws regarding campfires, debris burning and proper equipment use in fire prone areas. Educational and informational efforts will also continue with a focus on reducing fires resulting from electrical causes and youth involved fires.

- B. Another priority will be the continuation of Operation Santa Ana. This program is done with the cooperation and participation of Southern California Edison. This major cooperative program has been responsible for reducing to nearly zero the number of fires caused by faulty power equipment, power lines, and improperly cleared areas around the base of power poles see PRC sections 4292 and 4293. The San Bernardino County Fair is the largest single prevention and education event that the Unit participates in on an annual basis. For the last 15 years, this Unit has been the coordinator for the

Public Service area. This area is provided by the Fair at no cost to CAL FIRE San Bernardino Unit and the other governmental and non-profit organizations that participate there. Over the years, CAL FIRE has had a vested interest in making this area an important place for the public to visit.

- C. Another major effort of the San Bernardino Unit is to provide fire safety information and education to the news media. The News Media Fire Safety program has been ongoing since its creation by the Unit in 2001. The continuing goal of this program is to educate members of the print and electronic news media not only in wildland fire safety, but wildland fire behavior as well. The Section annually provides reminders to the varied news organizations in the Los Angeles and Inland Empire areas about the continued need for this important safety education training.

- D. SPECIAL TREATMENT AREAS 9051.5

(No. 7 September 1991)

Risk Rating Areas (RRAs) may contain smaller geographical areas of significance that a Unit may wish to pre-designate as a special treatment area. This area may be unique in comparison to surrounding areas and requires a separate prescription either through public education, vegetation management, law enforcement, engineering activities, or even political treatment.

Special Treatment Areas should be identified and assigned a numerical value for integration into the Fire Prevention Plan and handled as a separate planning area. Where several Special Treatment Areas are present, they should be categorized based on three separate scores: the values at risk, risk of fire starts, and difficulty of control. Apply a rating of 1-3 to each category and total all three ratings. The highest score becomes the top priority Special Treatment Area. Lower scores may receive less emphasis, less resources, or will be addressed at a later time.

- E. For the Owens Valley and northern reaches of the San Bernardino Unit, the work to provide information and education will continue. These efforts include;
1. Increasing the placement of roadside Fire Prevention Signs.
 2. Increase public education regarding illegal burning and campfires.
 3. Maintain CAL FIRE's participation in Smokey Bear team teaching in local area schools, fire safety displays at the Tri County Fair Grounds during the annual Home Show and

Mule Days, and Fire Prevention Week participation in the local communities of Inyo and Mono counties.

4. Establish a partnership and participate in the Los Angeles County Fair to provide CAL FIRE's mission of fire prevention through information and education.

COLLABORATION:

COMMUNITY / AGENCIES / FIRE SAFE COUNCILS

Representatives involved in the development of the Unit Strategic Fire Plan are included in the following table. Their organization and title are indicated below:

Organization	Title
San Bernardino County Fire	Public Information Officer
San Bernardino National Forest	Public Information Officer
San Bernardino Co. Sheriff's Dept.	Public Information Officer
San Bernardino Co. Fair	Public Information Officer
Southern California Edison	Public Information Officer

RESOURCE MANAGEMENT:

Overview

Consistent with the Department's mission, the Resource Management Division of the San Bernardino Unit (BDU) is committed to serving and safeguarding the people and protecting the property and resources of California. This is accomplished using a variety of tools including manipulation of fuels, resource protection, education, enforcement, and fire protection. Manipulation of fuels is accomplished by reducing the density and continuity of fuels while increasing overall health of the vegetation community. Supporting healthy vegetation communities must also address impacts associated with pests, diseases, and mortality. Resource protection provides this support through identification of vegetation pest and disease issues, implementation of pest and disease control efforts, and reforestation activities. Every contact that's made with the public is an opportunity to inform them about the benefits of creating healthy, fire resistant vegetation communities in and around their neighborhoods. It's also an opportunity to assist them in that endeavor by showing them how to do so, or by offering technical or financial assistance to accomplish the work. Enforcement of State regulations, particularly in the forest practice arena, helps ensure that the many natural resources in the wildland environment are protected now and into the future. As the need arises, Resource Management personnel are committed to supporting the fire protection and all risk mission of the Department in a role commensurate with their training and experience.

The BDU Resource Management Division is comprised of a Forester I (battalion chief rank equivalent), a Forestry Assistant II (captain rank equivalent), an Environmental Scientist, and a Pre-Fire Engineer (captain rank). Currently, all positions report directly to the Unit Chief. A Fire Captain assists Resource Management throughout the winter season to help coordinate the implementation of fuels reduction projects.

Resource Management covers all State Responsibility Area (SRA) lands within San Bernardino, Inyo, and Mono counties. While some SRA lands within the Unit are not under State Direct Protection Area (DPA) for fire, Resource Management does have a responsibility to exercise its function in all SRA lands regardless of the direct protection status.



Big Bear Lake, taken from the south side of Delamar Mountain.

Much of the work done by Resource Management is in the San Bernardino mountains, the eastern end of the San Gabriel mountains, and the Owens Valley. Elevations range from approximately 1200 feet at the San Bernardino valley floor to over 10,000 feet. Owens Valley is located in east-central California, between the Sierra Nevada on the west and the White Mountains on the east, and includes the area drained by Owens River and its tributaries. The Owens Valley bottom comprises the bulk of the SRA land in Inyo County, with an average elevation of 3,700 feet. The San Bernardino and San Gabriel Mountains are transverse ranges lying north of the San Bernardino and Los Angeles basins. They are characterized by a typical Mediterranean climate which can be very dry during the summer months with the bulk of precipitation coming during the winter months. The Unit was dramatically affected by five consecutive years of drought prior to the winter of 2017. 2017 through 2019 brought variable winter weather, with 2019 drought maps showing southern California out of drought conditions.

Southern California's Mediterranean climate makes it chronically susceptible to drought conditions. The drought experienced from 2014 - 2018, as well as droughts prior to 2011, played a significant role in the large wildfires that occurred in the San Bernardino mountains over the past 20 years – the Willow Fire in 1999, Old Fire in 2003, Grand Prix Fire in 2003, Grass Valley & Slide Fires in 2007, the Lake Fire in 2015 and most recently the Pilot and Blue Cut Fires, in 2016, which burned approximately 25,000 acres in less than 24 hours.

Communities at Risk in the mountain areas include:

Angelus Oaks
Forest Falls
Oak Glen
Arrowbear

Fawnskin
Rim Forest
Baldwin Lake
Green Valley Lake

Running Springs
Big Bear City
Lake Arrowhead
Sugar Loaf

Big Bear Lake
Lytle Creek
Twin Peaks
Blue Jay
Mount Baldy Village
Valley of Enchantment
Cedar Pines Park
Mountain Home Village
Wrightwood
Crestline

Resource Management Programs

Grants

In 2014 CAL FIRE introduced two new grant funding sources: State Responsibility Area (SRA) Fire Prevention Fee (FPF) Fund and the Greenhouse Gas Reduction Fund. In fiscal year 2017-2018, the Fire Prevention Fee was suspended until 2030 and the FPF Grant Program ended. The Greenhouse Gas Reduction Fund, now known as California Climate Investments (CCI), provides funding for the following CAL FIRE grant programs: Fire Prevention, Forest Health, Forest Legacy, California Forest Improvement (CFIP), and Urban Forestry. Ongoing CAL FIRE awarded grant projects within the Unit include:

2016 – 2017 Forest Legacy Grants:

- San Bernardino Mountains Land Trust – Arrowhead Ridge

2017 – 2018 Fire Prevention Grants

- Big Bear Fire Authority – SRA Hazardous Tree Mitigation Program
- Arrowhead Communities Fire Safe Council – Community Hazardous Fuels Reduction Projects
- Mountain Rim Fire Safe Council – Hazardous Tree Removal
- Mountain Rim Fire Safe Council – Community Chipping Program
- Mountain Rim Fire Safe Council – Living with Wildfire
- Transformation Ministries – Thousand Pines Shaded Fuel Break

2018 - 2019

- Regents of the University of California – Valentine Reserve Fuel Reduction
- Mountain Rim Fire Safe Council – Smokey Bear Prevention Education

2019 - 2020

- Mountain Rim Fire Safe Council – Abatement Assistance 2020
- Wheeler Crest Fire Protection District – Swall Meadows Fuel Reduction

Projects

Funding for Unit implemented fuel reduction, forest health, reforestation, and education projects also comes from CCI. In 2019, the Unit received a skid steer with masticator, brush rake, bucket, and grapple attachments, and a track chipper from South Region. These pieces of equipment have been put to work on several Unit projects. Current Unit projects include:

- Sawmill Fuels Reduction Project
- Hubert Eaton Scout Reservation Fuels Reduction Project
- Camp Whittle Fuels Reduction Project
- High Desert Chipping Project
- Insect Control Program (dead tree removal)
- Center VMP
- Calvert VMP
- Artesian VMP
- Dearborn Springs VMP
- Upper Little Bear Fuel Reduction Project

- Hubert Eaton VTP Prescribed Burn
- Lone Pine Fuel Reduction Project
- Smiley Park and Camp Whittle Reforestation Project
- Smokey Bear Park at County Fair



Crews completed the Winterton VMP prescribed burn in November 2019

Since 2007 Unit Resource Management staff has worked cooperatively with the Mountain Communities Wildfire Re-Leaf Program, administered by the Mojave Desert Resource Conservation District, reforesting burn areas or areas denuded by bark beetle infestations. Resource staff provides technical expertise to the working group for reforestation and directs crews on the ground at the time of planting. This effort is ongoing and additional work is planned for 2020 and 2021. Approximately 10,000 trees will be planted in the spring of 2020 at Camp Whittle.



CAL FIRE crews planting seedlings at Smiley Park.

Unit Resource Management assists with implementation of the California Forest Improvement Program (CFIP) program. The program scope includes the improvement of all forest resources, including fish and wildlife habitat, soil, water quality, and hazardous fuels reduction. CFIP provides technical assistance to private forest landowners, contractors, and governments agencies. Cost share assistance is provided to private forest landowners, Resource Conservation Districts, and non-profit organizations with SRA within their jurisdiction. Cost-share activities include forest management planning, tree planting site preparation, timber stand improvement, fish and wildlife habitat improvement, fuels reduction, and land conservation. Currently, the source of CFIP Fuels Reduction funds comes from the Greenhouse Gas Reduction Funds (GGRF) and the Timber Regulation and Forest Restoration Fund. The Hubert Eaton Scout Reservation, near Lake Arrowhead, received CFIP funding for the maintenance and construction of fuel breaks within the property.

The Natural Resource Conservation Service (NRCS) uses the same CFIP management plan template to meet management plan requirements for grant agreements and submits forest management plans (FMPs) to CAL FIRE for review of compliance with state laws and Forest Practice Rules. CAL FIRE provides technical expertise and FMP review for NRCS on an as needed basis.

Wildland Fire Response

In the event of a wildland fire, on DPA land within the Unit, Resource Management staff is mobilized to evaluate potential damage that may result from suppression activity. Work is then performed to mitigate any short or long term harm to the environment or to man-made features. Items of concern that the Department does not have authority to address are passed on to the most appropriate local, state or federal agency for further evaluation, and or action. Items of concern on private land that cannot be addressed during suppression repair efforts and are not the jurisdiction of another governmental agency are referred to the landowner. In 2019, Unit Resource Management staff performed suppression repair activities on the Milpas, Star, and Taboose fires within the Unit and the Saddleridge, Tick, and Getty fires in LA County.

Forest Health

The Gold Spotted Oak Borer (GSOB) is an introduced pest that was first discovered outside its native

range in San Diego County in 2008. It has since been identified in Riverside, Orange, and Los Angeles Counties. In 2017, Los Angeles County Fire Department received a Forest Health grant to remove GSOB infested trees in the SRA community of Green Valley. GSOB was found in Oak Glen in San Bernardino County in 2018 and in Big Bear and Wrightwood in San Bernardino County in 2019. It is believed to have been transported into and throughout southern California via movement of infested firewood. The infested trees identified in Big Bear and Wrightwood were removed in 2019 by the Pilot Rock hazard tree crew. Stakeholders representing local, state, and federal governments, non-profits, academia, and the public met to develop a GSOB response plan focusing on surveying, monitoring, outreach, and education. Several workshops were held throughout the San Bernardino mountains to educate the public about the history of the beetle in southern California, the life cycle of the beetle, and identification and management of infested trees. Additionally, numerous GSOB trainings were provided to tree professionals and other outdoor workers in the mountains focused on identification and reporting of infested trees. The group will continue to meet throughout 2020 and into the future, addressing the evolving GSOB situation in San Bernardino County.



Pilot Rock hazard tree crew removing and treating GSOB infested trees in Big Bear

The Polyphagous Shot Hole Borer (PHSB) is another introduced pest that has invaded southern California. So far it's known presence in San Bernardino County is limited to the western part of the County (Ontario and Chino) with a single find in Loma Linda.

The United States Forest Service's June 2019 aerial tree mortality survey of the San Bernardino National Forest estimates there are approximately 13,500 acres of the 800,000-acre Forest experiencing some level of tree mortality. That mortality is mostly less than 5 trees per acre and is occurring in the form of single trees or small clusters of trees. The largest concentration of tree mortality is in the Crestline area. California Climate Investments is helping fund the Unit's Insect Control Program and projects such as the Mountain Rim Fire Safe Council's Hazardous Tree Removal grant to address tree mortality within the Unit. The Unit continues to work with Caltrans and other agencies to assist in the removal of dead trees along highways and infrastructure. Tree mortality due to native forest pests like the western pine, Jeffrey pine, and fir engraver beetles will continue to fluctuate as forest health and environmental conditions impact pest populations. Unit Resource Management will continue to identify, implement, and support efforts to address impacts associated with these pests.

Since 2012, coast live oak trees have been observed dying in several southern California counties including Orange, Riverside and Los Angeles. Much of the coast live oak tree mortality is attributed to foamy bark canker, a fungal disease spread by the western oak bark beetle (WOBB). WOBB attacks

trees weakened by drought, disease, injuries, or other factors that may stress a tree. It was discovered that the disease is also killing California black oaks in the San Bernardino Mountains. This finding came from collaborative work between CAL FIRE San Bernardino and the University of California at Riverside (UCR) Cooperative Extension's Plant Pathology Department. BDU staff will continue to educate people about the risks associated with this disease, preventative options, and treatment methods.

Forest Practice & Environmental Compliance

Resource Management staff also conducts Forest Practice inspections pursuant to the California Forest Practice Act. The inspections are performed to ensure the Forest Practice Rules (FPRs) are implemented to protect all natural and cultural resources in a forest environment. Most Forest Practice related work is in the form of Less Than Three Acre Conversion Exemptions and Timber Harvest Plan exemptions.

Resource Management staff conducts environmental reviews (California Environmental Quality Act-CEQA) for existing facilities maintenance or new construction projects within the San Bernardino Unit. Unit facilities include fire stations, conservation camps, Unit Headquarters, or other infrastructure. Projects may include, but are not limited to, the replacement of generators, new gates and fences, roads and parking lots, alterations to the land, utility systems, improvements to drainage systems, or constructing new buildings.

The Resource Management staff also reviews CEQA related environmental documents for projects submitted by other government agencies. These types of proposed projects are located within the Unit, may have an impact upon the Department's fire and/or natural resource protection and management responsibilities, or require the Department's permits or approval. Project comments are submitted to the lead CEQA agency and the appropriate level of CAL FIRE involvement is determined.

Outreach & Education

The Resource Management staff also partakes in information and education programs throughout the Unit. School or university presentations about forestry and fire are conducted, foresters teach during the teacher's Forest Ecology Workshop in collaboration with the Mohave Environmental Education Consortium, and foresters also teach and participate in the San Bernardino Forestry Challenge among other community programs. This year, the field portion of the San Bernardino Forestry Challenge was held at the Sawmill fuel reduction project site.



Forestry Assistant II Ian McBride, Unit Forester David Haas, and previous Unit Forester Henry Herrera help prepare for the San Bernardino Forestry Challenge

Priorities:

- A. Resource Management priorities in fuels reduction/fire prevention are as follows:
1. Assist community groups and private landowners in planning and implementing fuel reduction and vegetation management projects.
 2. Work with partners to address forest pest and forest health issues.
 3. Develop and implement internal fuels and fire prevention projects described above.
 4. Continue to enforce and ensure compliance with the Forest Practice Rules.
 5. Maintain good relations with cooperators and develop new partnerships.

Collaboration:

Community/Agencies/Fire Safe Councils

Representatives involved in the development of the Unit Strategic Fire Plan are included in the following table. Their organization and title are indicated below:

Organization	Title
U.S. Forest Service	Entomologist
Mountain Rim Fire Safe Council	President
Inland Empire Resource Conservation District	Program Manager
Los Angeles Department of Water and Power	Representative
San Bernardino County Fire	Division Chief
U.S. Forest Service	Forest Supervisor
Cal Trans	Area Superintendent
Mojave Desert Resource Conservation District	Conservationist
Natural Resource Conservation Service	Area Forester
San Bernardino County Flood Control District	Representative
Southern California Edison	Area Vegetation Manager
San Bernardino County Code Enforcement	Representative
Angelus Oaks Fire Safe Council	Member
Wrightwood Fire Safe Council	Member
Wheeler Crest Fire Safe Council	President
Inland Empire Fire Safe Alliance	President

FENNER CANYON CC:

OVERVIEW

The San Bernardino Unit's Conservation Camp Program consists of the Chino Institute for Women Fire Training Center, as well as four conservation camps: Prado, Pilot Rock, Owens Valley, and Fenner Canyon. The conservation camps are located within San Bernardino, Los Angeles and Inyo counties; providing a combined resource total of 19 fire crews, a mobile kitchen unit (MKU), mobile food dispensing unit, two insect control crews, and various in camp products.

The conservation camps within the San Bernardino Unit work with federal, state, and local government agencies on fuels modification projects, broadcast burning, pile burning, and reforestation. These agencies include: Cleveland National Forest (CNF), San Bernardino National Forest (BDF), Angeles National Forest (ANF), Inyo National Forest (INF), Bureau of Land Management (BLM), California State Parks, and Kern County.

Fenner Canyon Conservation Camp (CC) is located at 29500 Big Rock Creek Road in the community of Valyermo, within the Angeles National Forest in Los Angeles County.

Under a Cooperative Agreement with the California Department of Corrections and Rehabilitation (CDCR), there are 128 inmates housed at Fenner Canyon CC, which make up six fire crews and the support staff for the crews and camp. Staffing consists of 1 Division Chief, 12 Fire Captain B's, 1 Office Tech, 1 Heavy Equipment Mechanic, and 1 CDF Maintenance Mechanic.

CAL FIRE operates the camp under a special use permit issued by the United States Forest Service (USFS). Under the conditions of the special use permit, CAL FIRE provides a minimum of two crews per day for project work on the Forest. Camp facilities include: dormitories, hobby shop, gym, kitchen, automotive shop, chain saw shop, and sewing shop.

In 2009, the Station Fire burned Los Angeles County Fire Department's Mount Gleason Camp. Thus, Los Angeles County Fire has been given the authority to dispatch Fenner Canyon Crews to initial attack responses within the state responsibility area (SRA) that are protected, under contract, by the Los Angeles County Fire Department. All emergency crew transports (ECT) assigned to Fenner Canyon CC have been issued Los Angeles County Fire radios and communicate directly with their dispatch center. In 2017, the fire crews have logged a combined total of 6,274 emergency response hours.

RESPONSE AREA:

Fenner Canyon CC's emergency response area includes the following:

- A. San Bernardino Unit:
The area east of Interstate 5, west of Interstate 15, south of Highway 18, and north of the Angeles National Forest/San Bernardino National Forest boundary lines.
- B. Los Angeles County:
The area east of 90th Street E, west of the San Bernardino County line, south of the Kern County line, and north of the Angeles National Forest boundary line.
- C. Angeles National Forest:
The area east of the Angeles Forest Highway, west of the San Bernardino National Forest boundary line, south of the Angeles National Forest boundary line, and north of the Angeles Crest Highway.
- D. San Bernardino National Forest:
The area east of the Angeles National Forest boundary line, west of Interstate 15, south of the San Bernardino National Forest boundary line, and north of Lytle Creek Canyon Road.
- E. Bureau of Land Management (BLM)/California Desert District (CDD):
The area east of the Bakersfield BLM District (BBD), west of the Colorado River, south of Death Valley, and north of Highway 18.
- F. Kern County:
The area east of the Caliente, west of the BBD boundary near the Tehachapi's, south of Kernville, and north of the Los Angeles County line.

PROJECTS:

- A. CAL FIRE San Bernardino Unit Facilities:
San Bernardino Unit Facilities consist of a variety of project responsibilities, which include: facility and ground maintenance, light construction, carpentry, station maintenance, painting, hazard reduction of weeds, landscaping, and litter control. Crews are also assigned the task of assisting Training Staff with wildland firefighting classes that teach shelter deployment, hose lays, line construction and tool outs.
- B. California State Parks/Tehachapi District:
The Tehachapi District consists of four state parks: California State Park Fort Tejon (Lebec, Kern County), California State Park Poppy Reserve (Lancaster, Los Angeles County), California State Park Red Rock (north of Mojave, Kern County), and California State Park Saddle Back (Lake Los Angeles, Los Angeles County). Work performed at these sites include: brush and weed hazard reduction around structures and fence lines, fuel breaks, repair and maintenance of facilities and campsites, fence work, trail maintenance, and construction of a sanctuary for tortoise habitation.
- C. CALTRANS/ Victorville – Cajon Pass Station:
CALTRANS projects run along Interstate 15 from Devore to Barstow, Hwy 18 from the Los Angeles County line to Lucerne Valley, Hwy 395 from Hesperia to Kramer's

Junction, Hwy 138 from the Los Angeles County line to Interstate 15, and Hwy 2 in Wrightwood. Fenner Canyon Crews commonly clear State right-of-way's of brush, tumbleweeds, trash and debris and routinely provide hazard mitigation maintenance using fuel breaks along fence lines located in these areas. Fenner Canyon Crews are also responsible for the repair and cleaning of drainages, as well as maintenance for the CALTRANS Victorville and Cajon Pass Yards.

D. Bureau of Land Management California Desert District (CDD):

Projects with the CDD include fuels management projects at the Mojave Preserve (i.e. cutting brush and preparing piles for burning). Details for broadcast burning on the Mojave Preserve are being worked out to include Fenner Canyon Crews, which would require the crews to spike out at the Mojave Preserve.

E. Angeles National Forest (ANF):

Under the special use permit, Fenner Canyon CC provides the ANF with two crews per day. Depending on the work project and timeframe, the camp will provide additional crews as need. Fenner Canyon Crews are dedicated to reforestation efforts in the areas that were impacted by the Station Fire, which burned over 100,000 acres. Tree Release and Wrightwood Fuels Management Projects require crews to complete tasks that consist of: felling hazardous trees, campground maintenance, trail maintenance, fuels reduction projects, hazard reduction projects, snow removal, trash removal, tree plantation projects and facility maintenance at the Big Pines and Grassy Hollow Visitor Centers. Crews also work on the Santa Clara Mojave River Ranger District campgrounds and hiking trails; performing minor construction, plumbing, painting, trash pick-up, snow removal, fire hazard abatement, general clean-up of ground storage areas and restrooms, repair and replacement of roads and boundary markers, parking bumpers, water lines, picnic tables, barbeque pits, and maintenance of the Pacific Crest Trail.

F. Wrightwood Fire Safe Council:

Fenner Canyon Crews commonly perform duties within the community of Wrightwood. The Fenner Canyon crews have recently worked in the Wrightwood community with the increasing Bark Beetle activity, and are expected to continue as drought conditions persist. Various hazard mitigation methods are utilized; increasing safety for the community. The Wrightwood Fire Safe Council currently has projects in which Fenner Canyon Crews are assigned: The Highway 2 Hazard Mitigation Project and the Adopt-A- Hydrant Program. Fenner Canyon Crews assigned to the Highway 2 Mitigation Project mitigate potential hazards by removing grass and brush within the CALTRANS right-of-way along Highway 2, between Highway 138 and the Los Angeles County line in Wrightwood. The Wrightwood Adopt-A-Hydrant Project utilizes Fenner Canyon Crews for clearing vegetation around fire hydrants. The crews also perform winter snow removal around the hydrants to provide San Bernardino County Fire Department personnel adequate working space around hydrants during emergency situations.

G. Lions Camp Wrightwood:

In addition to the services provided for the community of Wrightwood, Fenner

Canyon Crews also perform hazard mitigation techniques to Lions Camp Wrightwood. This project includes minor construction, plumbing, painting, trash pick-up, snow removal, sewage repair and installation, fire abatement, fuel reduction, general clean-up of grounds and buildings to include storage areas and restrooms, replace and repair road and boundary markers, parking bumpers, water lines, picnic tables, and other duties as requested.

H. San Bernardino County Flood Control District:

Fenner Canyon Crews provide services to the San Bernardino County Flood Control District. The Crews are assigned tasks that provide economic benefits to San Bernardino County by: reducing maintenance cost, suppression cost, flood damage, and the elimination of hazards. These goals are accomplished by reducing fuel loads and creating fire breaks, creating improved watersheds, and improving vegetation configurations, fire density, and the restoration of wildlife habitat.

I. City of Highland:

The City of Highland Project provides services to General City Facilities to help reduce costly maintenance for the City of Highland. Fenner Canyon Crews perform various tasks, which include: facility, grounds and maintenance, mowing lawns, fertilizing, seeding, hazard reduction of weeds, litter control, landscaping, clean-up, carpentry and painting to maintain and enhance city facilities.

J. Patton State Hospital:

Patton State Hospital, located at 3102 E. Highland Avenue, in Highland, California. Crews provide hazard mitigation by removing debris and dirt from flood control channels, grounds maintenance, landscaping, hazard tree removal, carpentry, and painting; enhancing the appearance of the State facility.

K. California Department of Water Resources:

Fenner Canyon Crews provide weed abatement along the California aqueduct and around various water treatment facilities in San Bernardino, Los Angeles, and Kern Counties as well as performing litter pick up and invasive species removal.

L. San Bernardino National Forest (BDF):

Fenner Canyon Crews assist the San Bernardino National Forest with Timber Stand Improvement and Fuels Management Projects, trash and litter control, felling hazardous trees, campground maintenance, trail maintenance, fuels reduction projects, hazard reduction projects, snow removal, tree plantation projects and facility maintenance both in the Wrightwood area and the Cajon Pass. Fenner Canyon Conservation Camp is also one of the primary partners in the Cajon Pass Ignition Reduction project.

COLLABORATION:

COMMUNITY / AGENCIES / FIRE SAFE COUNCILS

Representatives involved in the development of the Unit Strategic Fire Plan are included in the following table. Their organization and title are indicated below:

Organization	Title
CAL FIRE, BDU	Chief
U.S.F.S./ANF	Recreation officer
CALIF, STATE PARKS	District maintenance chief
CAL TRANS	Superintendent
CALIF, DEPT of FISH and GAME	Representative
SAN BERNARDINO CO, FLOOD CONTROL	Representative
CITY of HIGHLAND	Public Works Director
PATTON STATE HOSPITAL	Chief Plant Op's 3
CALIFORNIA DEPT OF WATER RESOURCES	Representative

PILOT ROCK CC:

OVERVIEW

Pilot Rock Conservation Camp (CC 15) is located in Miller Canyon off Hwy 138 6 miles north of Crestline in the community of Crestline near Lake Silverwood, within the San Bernardino National Forest in San Bernardino County.

Under a Cooperative Agreement with the California Department of Corrections and Rehabilitation (CDCR), there are 85 inmates housed at Pilot Rock CC which make up three fire crews and one hazard tree crew, that make up a fourth fire crew. Staffing consists of 1-Division Chief, 1-Battalion Chief, 10-Fire Captain B's, 1- Heavy Equipment Mechanic, shared between Pilot Rock Camp and Fenner Camp, and 1-Water/Sewer Plant Operator.

CAL FIRE operates the camp under a special use permit issued by the United States Forest Service (USFS). Camp facilities include: dormitories, hobby shop, kitchen, automotive shop, saw shop, canvas shop, waste treatment plant and lab.

RESPONSE AREA

Pilot Rock CC's emergency response area includes the following:

A. San Bernardino Unit:

The area east of Interstate 15, west of twenty-nine palms, North of Interstate 10 south of Apple Valley and Inyo and Mono Counties

B. Bureau of Land Management (BLM)/California Desert District (CDD):

The area east of the Bakersfield BLM District (BBD), west of the Colorado River, south of Death Valley, and north of Highway 18.

C. San Bernardino National Forest:

Federal responsible areas within San Bernardino County

PROJECTS

A. CAL FIRE San Bernardino Unit Facilities:

San Bernardino Unit Facilities consist of a variety of project responsibilities, which include: facility and ground maintenance, light construction, carpentry, station maintenance, painting, hazard reduction of weeds, landscaping, and litter control. Crews are also assigned the task of assisting Training Staff with wildland firefighting classes that teach shelter deployment, hose lays, line construction and tool outs.

B. California State Parks Lake Silverwood

Work performed at these sites include: brush and weed hazard reduction around structures and fence lines, fuel breaks, repair and maintenance of facilities and campsites, fence work, trail maintenance, and hazard tree removal.

C. San Bernardino National Forest (BDF):

Projects for the BDF are located throughout out San Bernardino N.F. Pilot Rock Crews work with the Forest on broadcast and pile burning by constructing fire line, performing fire attack, control, holding operations, and mop-up. Work also includes hazard mitigation projects such as fuel reduction and fuel breaks providing protection to various mountain communities located throughout the San Bernardino National Forest including roadside brush removal on various mountain truck trails, rural roads, and egress routes identified by the Mountain Area Safety Task Force.

D. CALTRANS:

CALTRANS projects run along mountain state highways 330, 138, and Hwy 18. Pilot Rock Crews commonly clear State rights-of-way of brush, hazardous timber and vegetation threatening ingress and egress routes throughout mountain communities.

Fence line right-of-way fuel reductions projects provide roadside fuel breaks. Crews also assist in the repair and cleaning of drainages, removal of non-native plants, and debris.

E. Adopt A Highway:

Pilot Rock crews are responsible for vegetation control and litter removal along Hwy 138 around Lake Silverwood. To provide aesthetic benefits of cleaner and more beautiful roadsides and prevent potential pollutants from entering our waterways.

F. San Bernardino County Flood Control District:

Pilot Rock Crews provide services to the San Bernardino County Flood Control District. The Crews are assigned tasks that provide economic benefits to San Bernardino County by: reducing maintenance cost, suppression cost, flood damage, and the elimination of hazardous timber along county roads maintaining ingress and egress routes clear and safe. Other common responsibilities include clearing flood basins of non-native vegetation and debris to maintain clear water flows at road crossings. These goals are accomplished by reducing fuel loads and creating fire breaks, creating improved watersheds, and improving vegetation configurations, fire density, and the restoration of wildlife habitat.

G. San Bernardino County Regional Parks:

Lake Gregory, Mojave Forks, Glen Helen. Work performed at these sites include: brush and weed hazard reduction around structures and fence lines, fuel breaks, repair and maintenance of facilities and campsites, fence work, trail maintenance, and hazard tree removal.

H. Hesperia Parks and Recreation:

Pilot Rock crew provide economic benefits to city of Hesperia by: reducing maintenance cost and the elimination of hazards by providing general park and road side upkeep and maintenance including irrigation repairs, trimming, weed abatement and general maintenance.

I. Helendale CSD:

Pilot Rock crews provide maintenance of public facilities in and around the community of Helendale. Including weed abatement, minor building repairs, and vegetation reduction and irrigation system maintenance.

J. Insect Control Program (ICP):

Pilot Rock crews carry out the Unit's Insect Control Program. CAL FIRE is given authority to use monies for controlling forest insects by the Public Resources Code (Article 5, Sections 4712-4718) and by the Declaration of a "Zone of Infestation" by the State Board of Forestry. CAL FIRE has authority only to treat actively infested trees on private land within SRA with habitable structures. The purpose of the program is to assist landowners with tree removal cost to control the spread of bark beetles and reduce the fire risk. Ultimately it is the landowner's responsibility to remove hazardous trees.

K. Fuels Reduction and Fire Prevention

Fuel reduction projects will be identified for future planning with local Fire Safe Councils, BDU resource management, and local cooperators. Once established, the fuel reduction along identified corridors and perimeter can help reduce the number of roadside fires started by vehicles and discarded burning materials. This will help ensure roads used for ingress and egress, do not have fuel loads immediately adjacent to the roadway and provides defensible areas to slow or stop the rate of fire spread. CAL FIRE crews are taking an active role in reducing the severity and spread of the bark beetle and associated mortality by felling and then treating the downed material.

COLLABORATION:

COMMUNITY / AGENCIES / FIRE SAFE COUNCILS

Representatives involved in the development of the Unit Strategic Fire Plan are included in the following table. Their organization and title are indicated below:

Organization	Title
CAL FIRE, BDU	Fire Chief
C.A. State Parks	Representative
U.S.F.S/BDF	Representative
CAL TRANS	Representative
San Bernardino County Flood Control District	Representative

PRADO CC:

OVERVIEW

Prado Conservation Camp is located at 14467 Central Avenue in the City of Chino in San Bernardino County.

Under a Cooperative Agreement with the California Department of Corrections and Rehabilitation (CDCR), there are currently 91 inmates housed at Prado CC, which make up four fire crews, Mobile Kitchen Unit, and Regional Staging Area. The support staff for the crews and camp, consists of 1 Division Chief, 8 Fire Captain B's and 1 Heavy Equipment Mechanic.

Prado Helitack successfully transitioned from an inmate-staffed Helitack program with the San Bernardino County Sheriff and the California Department of Corrections and Rehabilitation, to a dedicated Helitack crew with hoisting capabilities designed to assist with rescue efforts and mutual aid throughout the region. This has resulted in an additional helicopter to the State's fleet. This new program is a significant accomplishment for the Department, Region and Unit. Additionally, the San Bernardino Unit has completed an interim helibase facility at Prado Conservation Camp. CAL FIRE operates the camp. Camp facilities include: CAL FIRE office and BOQ, CDCR office and BOQ, dormitories, hobby shop, apparatus bay, kitchen, automotive shop, and chain saw shop.

RESPONSE AREA:

Prado CC's emergency response area includes the following:

A. San Bernardino Unit (BDU):

The area east of the San Bernardino County line, west of Interstate 15, south of the Angeles National Forest boundary line, and north of the Cleveland National Forest boundary line.

B. Los Angeles County (LAC):

The area east of Interstate 605, west of the Los Angeles County / San Bernardino County line, south of the Angeles National Forest boundary line, and north of the Orange County line.

C. Orange County (ORC):

The area east of Highway 57, west of the Cleveland National Forest boundary line, south of the Orange County / San Bernardino County line, and north of the Pacific Ocean.

D. Angeles National Forest (ANF):

The area east of the Angeles Crest Highway, west of Interstate 215, south of Kenwood and Interstate 15, and north of interstate 210.

E. San Bernardino National Forest (BDF):

The area east of the San Bernardino National Forest boundary line, west of the San Bernardino County / Riverside County line, south of the San Bernardino National Forest boundary line, and north of interstate 10.

F. Cleveland National Forest (CNF):

The area east of Highway 241, west of Interstate 15, south of Highway 91, and north of Highway 74.

PROJECTS:

A. CAL FIRE San Bernardino Unit Facilities:

San Bernardino Unit Facilities consist of state fire stations and the Unit Headquarters in the San Bernardino Unit. A variety of project responsibilities are performed which include, but are not limited to facility and ground maintenance, light construction, carpentry, painting, hazard reduction of weeds, and landscaping.

B. California Department of Forestry/ Region Office – Special Projects/ Car Wash:

Region Office Facility in Riverside consists of a variety of project responsibilities, such as facility and ground maintenance, light construction, carpentry, painting, hazard reduction of weeds, landscaping, and litter control. Crews are also assigned the task of helping clean the shop area as well as wash all vehicles at the Regional Office.

C. California State Parks / Chino Hills – Special Projects

Chino Hills State Park consists of 14,000 acres ranging from the Santa Ana Mountains to the Whittier Hills and has over 65 miles of trails. The crews work diligently throughout the park, performing fuel break maintenance, vegetation management, trail maintenance, tree felling and trimming, and road/drainage repair at creek crossings.

D. Yucaipa City Fire (CAL FIRE)

Crews work at fire stations doing general yard maintenance, hazard fuel removal, and general maintenance.

E. California State Beaches / Orange County Coast District

The Orange County Coast District consists of six State Beaches: California State Beach San Onofre, California State Beach San Mateo, California State Beach San Clemente, California State Beach Doheny, California State Beach Crystal Cove, and California State Beach Bolsa Chica. Work performed at these sites include: Fire hazard reduction and fuel breaks, brush and weed reduction around structures and campsites, restoration of wildlife habitat, removal of invasive species, building and maintaining trails, tree felling and chipping, landscaping, light construction, and maintenance of facilities and infrastructure.

The Orange County Coastkeeper Garden is an area where residential property owners and renters in Orange County can see examples of drought tolerant and water friendly backyards. The area set aside is part of the Santiago Canyon College and crews help construct pathways, plant trees and shrubs, remove weeds and mulch, spread decomposed granite, and place boulders.

F. City of Corona / Corona Airport

Removal of sapling trees and vegetation in the runway protection zone, as well as fuels reduction for flood control in the south and north areas of the airport.

G. City of Corona / Corona Fire Department / Corona Fuel Break

Work with prevention personnel with the Corona Fire Department to reduce fuel loading and provide fuel breaks between homes in Corona and the Prado Flood Basin.

H. City of Corona / Public Works Department

This project is in the Prado Flood Basin and is limited to ponds 9 and 10 near Greenbriar Street. Crews remove trash and debris from both ponds and the surrounding areas. They also remove non-native plant species, like Tamarisk and Castor Bean, from the ponds, and provide hazard fuel reduction and litter removal around various city parks throughout the City of Corona.

I. United States Forest Service / San Dimas

Prado CC works in conjunction with the Angeles National Forest and the San Dimas Experimental

Forest in fire hazard reduction, trail maintenance, debris and silt removal and minor facility maintenance at Tanbark, Rain Gauge Hill, Monroe Stream Gauge Station, Volfe Stream Gauge Station, Lysimeter, Bell canyon, West Fork Trails, Fern Rain Gauge Trail, and Wolfskill Rain Gauge Trail.

J. San Bernardino County Floods Control District

Work is performed at the various flood control areas within San Bernardino County consist of vegetation removal, weed abatement, fuels reductions, fuel breaks, and facility/grounds maintenance.

K. California Department of Corrections / CIM – Gun Range

Work is performed at the California Institute for Men in the City of Chino. The firing range is utilized by California Department of Corrections and other law enforcement agencies throughout the state. Work performed is grounds maintenance, fire hazard reduction and tumbleweed pile burning, landscaping, and facility maintenance to the classroom.

L. California Department of Corrections / CIM – Special Projects

Work is performed at the California Institute for Men in the City of Chino. Ground maintenance and trash pickup in various parts of the facility are performed.

M. Chino Valley Fire Department / Carbon Canyon

Through a Federal Grant, Chino Valley Fire Department is using crews to create a shaded fuel break throughout the populated areas in the Orange, San Bernardino, and Los Angeles Counties north of Highway 142 in the Carbon Canyon area. Work consists of building a fuel break by removing the dead and downed fuels as well as breaking up the continuity of fuel loading in the project area.

N. Inland Empire Utilities Agency / Chino Creek Park

The Chino Creek Park Wetlands and Ecosystem Restoration project is located at the south- east corner of Kimball Avenue and El Prado Road. Within the 22-acre site crews plant small trees and shrubs, install irrigation lines, remove non-native species, and pick up litter.

O. California Department of Fish and Wildlife

The Fish and Wildlife facility, located the City of Chino Hills, is primarily used as a storage area. Work performed includes fuels reduction, hazard abatement and clearance of facilities, limb and pruning of trees, and light construction on buildings.

Prado Conservation Camp supports the counties of Los Angeles, Orange, and San Bernardino. As well as the communities of Chino, Chino Hills, Corona, Diamond Bar, and City of Industry with vital fuels projects and community enhancements.

P. CALTRANS DOT (Inland Empire Division)

Work in conjunction with CALTRANS personnel to complete road side cleanup on HWY 71 from Riverside County line to LA County line and from the 60 Fwy and 10 Fwy from Riverside County line and LA County line.

Q. Chino Water Basin District

Work is performed at the various flood control areas within San Bernardino County and consist of vegetation removal, weed abatement, fuels reductions, fuel breaks, facility/grounds maintenance and trash removal.

COLLABORATION:**COMMUNITY / AGENCIES / FIRE SAFE COUNCILS**

Representatives involved in the development of the Unit Strategic Fire Plan are included in the following table. Their organization and title are indicated below:

Organization	Title
California Dept. of Forestry	RON JANSSEN
Chino Hills State Park	BEN SPIVA
San Bernardino County Floods	CHRIS SCHIERHOLD
Corona Airport	CURTIS SHOWALTER
California Dept. of Transportation	JESSE POLOMINO
Carbon Canyon Fuels Reduction (CVFD)	JEREMY AULT
City of Corona/Corona Fire Dept	XANTE BAKER
California Dept. of Corrections (CIM)	ARMANDO ESPINOZA
Inland Empire Utilities Agency	HARLAN DELZER
California Dept. of Fish & Wildlife	DANIELLE STEWART
City of Corona Parks & Recreation	MOSES CORTEZ
City of Corona Public Work Dept.	MOSES CORTEZ
United States Forest Service	DAVE GLABADON
Orange County Coastkeeper	STEVE SCOTT
Chino Valley Fire	SCOTT ATKINSON
Chino Water Basin District	DAVE SCHROADER
STARK/ NELLIS CDCR	SEAN BUCKLEY
CALFIRE South Ops (CSR)	FERNANDO HERNANDEZ

OWENS VALLEY CC:

OVERVIEW

Owens Valley Conservation Camp (CC) is located within the BDU/Eastern Sierra Division at 2781 S. Round Valley Road in the community of Bishop, in Inyo County. Under a Cooperative Agreement with the California Department of Corrections and Rehabilitation (CDCR), there are 128 inmates housed at Owens Valley CC, which make up five fire crews and the support staff for the crews and camp. Staffing consists of 1 Division Chief, 1 Battalion Chief, 10 Fire Captain B's, 1 Office Tech, 2 Heavy Equipment Operator/ Mechanic, and 1 CDF Maintenance Mechanic/ WASPO.

Camp facilities include: dormitories, hobby shop, exercise yard, kitchen, automotive shop, chain saw shop, wood shop, welding shop and sewing shop.

RESPONSE AREA:

Owens Valley CC's emergency response area includes the following:

A. Inyo, Mono, San Bernardino Unit:

The area west of the Nevada state line (Inyo & Mono Counties), north on Highway 395 to the Lake Topaz and north on Highway 6 to Montgomery Pass to the Nevada state line (Mono County) and Toiyabe National Forest, South on Highway 395 to Inyokern (Kern County), and East of the Eastern Sierra Mountain Range/ Inyo National Forest (INF).

B. Inyo National Forest:

The area between the White Mountains and Eastern Sierra Mountain Range.

C. Toiyabe National Forest:

The area approximately 5 miles north-west of Bridgeport to the Toiyabe National Forest Boundary line.

D. Bureau of Land Management (BLM):

1. Owens Valley District (OVD) & California Desert District
2. The area north of Coso Junction (CDD)
3. The area south of Topaz Lake on Highway 395 & south of the Nevada state line at Montgomery Pass on Highway 6. (OVD)

E. National Parks:

1. The area north west of Death Valley National Park boundary line.
2. The area east of the Yosemite National Park at Tioga Pass boundary line.

PROJECTS:

A. CAL FIRE Inyo, Mono, San Bernardino Facilities:

San Bernardino Unit Facilities consist of a variety of project responsibilities, which include: facility and ground maintenance, light construction, carpentry, station maintenance, painting, hazard reduction of weeds, landscaping, and litter control. Crews are also assigned the task of assisting Training Staff with wild land firefighting classes that teach shelter deployment, hose lays, line construction and tool outs.

B. Owens Valley Shaded Fuel Breaks:

Crews creating shaded fuel breaks for fire protection in SRA lands around the communities in the Owens Valley including Bishop, Big Pine, Independence, Lone Pine, Olancho, Mono City, Wilkerson, and Swall Meadows.

C. Cal Trans/ Bishop:

CALTRANS projects run along Highway 395 Lone Pine to Mammoth, Highway 6 from the Nevada state line to Bishop, Highway 168 from the Nevada state line to Lake Sabrina. Owens Valley Crews commonly clear State right-of-way of brush, tumbleweeds, trash and debris (Adopt a Highway) and routinely provide hazard mitigation maintenance by the use of fuel breaks along fence lines located in these areas. Owens Valley Crews are also responsible for the repair and cleaning of drainages.

D. Department of FISH and Wildlife: Fish Springs, Black Rock, Mt. Whitney, HotCreek.

Fish and Wildlife Facilities consist of a variety of projects, which included general maintenance and clean up, including brush removal tree trimming, fire and flood hazard reduction, general maintenance and repair of facilities and grounds.

USFS/BLM

A. Swall Meadows:

Fire Crews utilized to thin dead trees in forest areas affected by the Round Fire in and around the community of Swall Meadows. This will create a shaded fuel break to protect against future fire activity.

B. Mammoth Lakes:

Fuels reduction will be managed through brush clearing, tree liming and felling, and preparing fuels for chipping and burning. This will occur within the town and surrounding USFS Lands, including Reds Meadow and Devils Postpile.

C. BLM Campgrounds

General maintenance and clean up in the following Campgrounds: Tuttle Creek, Goodale Creek, Horton Creek, and Crowley Lake. Crews to remove overgrown brush and mitigate hazardous trees. This will improve public safety and risk of fire.

LOS ANGELES CITY/ LADWP:

D. Control Gorge:

Crews will be clearing brush and trimming trees around houses and Power Plant area to provide a defensible fire break.

E. Locust:

Crews will be clearing locust trees so they can be treated by the sponsor with herbicide. Trees shall be cut to firewood lengths or to 8ft. post length. In some areas, the slash will be hauled to another site to be disposed of and some sites will be piled on site for later burning.

F. Russian olive:

Crews will be clearing and Cutting the Russian olive and Salt Cedar Trees in the Georges Creek area an important wildlife area.

G. Independence Woodlot:

Crews will need to trim out all weedy tree species, and cut saplings for replanting in the spring. Crews will harvest all dead trees and possibly harvest a couple rows of trees per the harvest plan. Crews will cut trees into firewood for LADWP community donation.

H. Lone Pine Woodlot:

Crews will need to trim out all weedy tree species, and cut saplings for replanting in the spring. Crews will harvest all dead trees and possibly harvest a couple rows of trees per the harvest plan. Crews will cut trees into firewood for LADWP community donation.

I. Division Creek Power Plant:

Clear brush, debris, and tree limbs from around Power Plant and Intake structures to provide defensible fire break areas. Work needs to be completed to provide fire protection and to comply with CAL FIRE Defensible Area Requirements. Clear brush and debris in ditch and along ditch banks of water conveyance ditch between Scotty's Spring and Division Creek Power Plant Intake.

J. Cottonwood Power Plant:

Clear brush, debris, and tree limbs from around Power Plant and Intake structures to provide defensible fire break areas. Work needs to be completed to provide fire protection and to comply with CAL FIRE Defensible Area Requirements.

K. Big Pine Power Plant:

Clear brush, debris, and tree limbs from around Power Plant and Intake structures to provide defensible fire break areas. Work needs to be completed to provide fire protection and to comply with CAL FIRE Defensible Area Requirements.

L. Various Snow Courses:

Maintain travel routes for snow cats to access locations to measure snow packs. This is done by removing fallen trees, liming trees, and removing ground materials during Summer months.

INYO COUNTY:

M. Waste Management:

Big Pine Transfer, Independence, Lone Pine, Bishop Sunland.

General Maintenance and clean up. Removal of wind-blown litter inside and outside fence line and at specific target areas.

N. Park and Recreation:

Baker Creek Camp Ground, Diaz Lake, Izaak Walton Park, Mendenhall Park, Millpond Park, Pleasant Valley Camp Ground. General Maintenance and clean up. Including brush removal, tree trimming, and hazard reduction in the various parks and camp grounds.

O. Road Department:

Crews will clean tree limbs and tumble weeds out of the Bishop By-Pass channel to allow for uninterrupted spring runoff flows; this is needed to keep the waterways clear that go under the roadways, if waterways clog up with debris the water will create damage to the road.

P. Mosquito Abatement:

Crews will cut willows that impede access to and treatment of developing Mosquito population.

Q. Airports:

Bishop, Independence, Lone Pine: General Maintenance and clean-up of Inyo County Facilities, grounds and runways, including brush removal and hazard reduction.

R. City of Bishop:

Projects with the city of Bishop include working with the Chamber of Commerce assisting them with setting up and disassembling equipment for special events being held at the city park. Also, taking crews out to the Pleasant Valley Reservoir and cleaning the area of litter and debris before and after and setting up tents, tables and displays for the Fishing tournament, Brush clearance and cleanup along creek within the vicinity of the Bishop Senior Recreation Center.

S. Bishop Paiute Indian Reservation:

Projects consist of removing hazardous Fuels reduction for the Bishop Paiute Tribe and create a defensible space for tribal structures. Maintain multiple waterways by cleaning overgrown brush, and fallen trees.

T. State Fair/ Tri County Fair Grounds:

General maintenance and repair of facilities and fairground, set up for events and teardown after events. Tri County holds numerous events (Eastern Sierra Fair, Mule Days, California high School Rodeo Association Finals, Choo swap meet, Fall Colors car show).

U. Lone Pine Fire Safe Council:

Owens Valley Crews commonly perform duties within the community of Lone Pine. Various hazard mitigation methods are utilized; increasing safety for the community. The Lone Pine Fire Safe Council currently has the Airport VMP Burn project in which Owens Valley Crews are assigned to.

V. Independence Fire Safe Council:

Owens Valley Crews commonly perform duties within the community of Independence. Various hazard mitigation methods are utilized; increasing safety for the community.

W. Big Pine Fire Safe Council:

Owens Valley Crews commonly perform duties within the community of Big Pine. Various hazard mitigation methods are utilized; increasing safety for the community.

X. Eastern Sierra Regional Fire Safe Council:

Owens Valley Crews commonly perform duties within the community of South Fork Bishop Creek. Owens Valley crews will cut a fire defensible space around the building in the community for public, reduction of hazards, and establish a shaded fuel break and fuel reduction.

Y. Bernasconi Center:

The crews will create brush clearances for defensible space for buildings on the school grounds. Improve and restore water flows for firefighting by cleaning out the ditches and ponds.

Z. Round Valley School District:

General Maintenance, clean up and repair of buildings and grounds.

AA. Owens Valley School District:

General Maintenance, clean up and repair of buildings and grounds.

BB. Friends of Eastern Sierra California Museum:

General Maintenance of facilities, grounds, and exhibits to promote public safety and preserve the history of the Owens Valley.

CC. Friends of Mt. Whitney Fish Hatchery:

Owens Valley Crews will assist with ground maintenance, tree trimming. Removal

of residual brush piles, clean ponds, and raceways that was filled with debris from the 2007 flood.

DD. Eastern Sierra Dog Rescue:

Owens Valley Crews will assist with Ground Maintenance, Fencing, and Landscaping within the Inyo Animal Shelter.

EE. Laws Railroad Museum:

The crews will perform general maintenance of fence lines, building and grounds within and around the Historical Museum

FF. Woodman Cemetery:

The crews assist with the removal of weeds from woodman cemetery inside and outside of fence line.

MONO COUNTY:

GG. Waste Management: Benton Crossing Landfill

General Maintenance and clean up. Removal of wind-blown litter inside and outside fence line and at specific target areas.

HH. Mammoth Lakes Fire Department:

The crews perform winter snow removal around the hydrants to provide Mammoth Lakes Fire Department personnel adequate working space around hydrants during emergency situations. Also, the crews help with Fuels Management Projects which require crews to complete tasks that consist of: felling hazardous trees, trail maintenance, fuels reduction projects, hazard reduction, litter removal in the Shady Rest area intown.

II. Town of Mammoth Lakes:

The crews will help thin trees in forested areas to provide fire breaks and improve overall health of the forest. In addition to vegetation management in populated areas, crews will assist the trails crews in creating new hiking and mountain biking trails around the outskirts of town, while maintaining existing trails.

JJ. June Lake FD:

Snow removal from fire hydrants and community buildings. General hazard removal and clean up around fire stations.

KK. Edna Beaman School: Benton

General Maintenance, clean up and repair of buildings and grounds.

LL. Chalfant VFD:

General hazard removal and clean up around fire stations.

MM. Lee Vining VFD:

General hazard removal and clean up around fire stations.

NN. Long Valley VFD:

General hazard removal and clean up around fire stations.

OO. Paradise VFD:

General hazard removal and clean up around fire stations.

PP. Wheeler Crest VFD:

Weeding and grounds maintenance, washing equipment, building maintenance. Prep and paint exterior of building.

QQ. Bodie State Park:

The crews will perform general maintenance of fence lines, water systems building and grounds within and around the park boundaries.

RR. Hilton Creek:

Clear sewer district property of weeds and sage brush for fire defensible space, and for inspection of equipment from sewer plant personal.

SS. Owens Valley Radio Observatory:

The crews will create brush clearances for defensible space for buildings on the OVRO facility, as well as along east-west Road corridor between site buildings.

TT. University of California Santa Barbara:

Snarl: Owens Valley crews will cut, remove, and pile brush for hazard reduction, control of invasive species, and access to experimental stream system. While this is City of Los Angeles lands, as lessee, they have the authority to conduct this project. This project was done once before (2002) with Conservation Camp crews and was very successful.

UU. Valentine Reserve:

The crews will fall, limb, and remove marked standing and down timber and slash. Haul timber for disposal by sponsor. Haul slash to central location and chip in sponsor's chipper or pile for burning. All trees marked by sponsor; all work supervised by sponsor.

VV. Swall Meadows Fire Safe Council:

Crews will perform hazardous fuels reduction along travel corridors accessing the community of Swall Meadows to increase safety for citizens during emergency incidents and reduce potential for fire spread.

We are committed to our local and federal cooperators and communities to reduce fire hazards and to provide fire prevention education to enhance our integrated and cooperative fire protection within the Owens Valley.

COLLABORATION:

COMMUNITY / AGENCIES / FIRE SAFE COUNCILS

Representatives involved in the development of the Unit Strategic Fire Plan are included in the following table. Their organization and title are indicated below:

Organization	Title
Los Angeles Dept. of Water and Power	Ranch Lands Manager
Bureau of Land Management	Division Chief
Inyo National Forest	Division Chief Bishop Area
Inyo National Forest	Division Chief Lone Pine Area
Bishop Fire Department	Fire Chief
Mammoth Lakes Fire Department	Fire Chief
Lone Pine Fire Safe Council	President
Twin Lakes Fire Safe Council	President
South Fork Bishop Creek FSC	President
Inyo County Sheriff	Sheriff
Mono County Sheriff	Sheriff
Bureau of Land Management	Deputy Chief
Humboldt-Toiyabe National Forest	Fire Management Officer
Antelope Valley Fire Department	Fire Chief
Aspendell Valley Fire Department	Fire Chief
Big Pine Fire Department	Fire Chief
Bridgeport Fire Department	Fire Chief
Chalfant Valley Fire Department	Fire Chief
Independence Fire Department	Fire Chief
June Lake Fire Department	Fire Chief
Lee Vining Fire Department	Fire Chief
Long Valley Fire Department	Fire Chief
Mono City Fire Department	Fire Chief
Olancha Fire Department	Fire Chief
Paradise Fire Department	Fire Chief

Organization	Title
Southern Inyo Fire Department	Fire Chief
Wheeler Crest Fire Department	Fire Chief
White Mountain Fire Department	Fire Chief

CALIFORNIA INSTITUTION FOR WOMEN (CIW) Training Facility:

OVERVIEW

During the summer of 1983, a pilot program was developed at CIW to determine the viability of using female inmates for fire suppression, and fire prevention. Once the pilot program was considered achievable, the go ahead was issued and the program was relocated to Rainbow Fire Camp in October 1983. This was the first all-female inmate firefighting camp in the state. Both CDC and CDF saw a need to expand the program to allow more females to participate in fire suppression, while addressing overcrowding issues at CIW.

The female Camp program expanded by two additional camps; Puerta La Cruz, (located near Warner Springs in San Diego County), and Malibu (located in Los Angeles County). June 1985 CIW training center was established at 16756 Chino-Corona Rd, in the city of Chino. This is the only training, and development center for female inmate firefighters in the State of California.

The operation of the Forestry Training Program (FTP) is a joint effort between CDCR, and CAL FIRE. CDCR screens and classifies inmates assigned to CIW. Inmates, who meet the requirements for the Forestry program, are placed into the Pre-Forestry Training program (PFT). The PFT is 6 weeks of rigorous physical conditioning intended to transition inmates, into physically fit inmate Firefighters. CDCR sets the standards and monitors the progress of inmates, until they're able to pass the physical requirements. Inmates in PFT have the option to challenge the 6 week PFT Program by taking a the "Pack Test Hike" which consist of a 3-mile hike with a 45- pound weighted vest over level terrain with a passing time of 45 minutes or less to pass the test. If the inmate successfully passes the "Pack Test Hike" they will bypass the PFT Program and enter the FFT Program (Fire Fighter Training) Program.

Once in FFT, the inmate is assigned to the 58-hour course training program which is designed to train to basic standards. This course was developed by the CAL FIRE Academy, and is presented to the inmates by CAL FIRE Captains. The first portion is a 28-classroom instruction. The course material covers, wildland fire safety awareness, S-190, teaching skills with enhancing the survivability and prevention of injuries in the hostile work environment found with fighting wildland fires. Inmates also receive training with the proper use of firefighting hand-tools, and equipment used to suppress wildland fires.

Once an inmate completes the classroom they are assigned to 30 hours' field training, this training is taught by CAL FIRE Captains. Hiking techniques, proper and safe use of fire tools, fire shelter training, and the principles of teamwork to construct fire line are taught. During the field training Inmates are expected to complete all required hikes within the allotted timeframes given. Upon completion of the field training, inmates are relocated to the various fire camps within the state.

The three camps supported by CIW training center have a total of 330 beds available. To keep the camps near capacity, CIW needs to graduate 30-35 fully trained firefighters each month. The assignment and movement of inmates through the Training Center are dependent upon individual needs per fire camp.

PRIORITIES:

- A. Provide sufficient Fire Crew Captains to instruct, train and supervise camp endorsed inmates to maintain camp populations.
- B. Provide all training materials, tools, aids and curriculum developed or approved by the CAL FIRE Academy.
- C. Provide training sites for the field crew.
- D. Provide all personal protective equipment, and other equipment, tools and supplies routinely associated with training for the inmates and staff assigned to Forestry Training Program.

CIW supports both Los Angeles County Fire Department (Malibu CC) and CAL FIRE (Puerta La Cruz CC and Rainbow CC) with qualified female inmate firefighter personnel. CAL FIRE CIW staffing consists of 1 battalion chief and 4 training fire captains.

COLLABORATION:

COMMUNITY / AGENCIES / FIRE SAFE COUNCILS

Representatives involved in the development of the Unit Strategic Fire Plan are included in the following table. Their organization and title are indicated below:

Organization	Title
BDU	Battalion Chief
CDCR	Captain
MVU	Assistant Chief
LAC	Captain

IGNITION MANAGEMENT PLAN:

CAL FIRE



FIRE PREVENTION BUREAU CAL

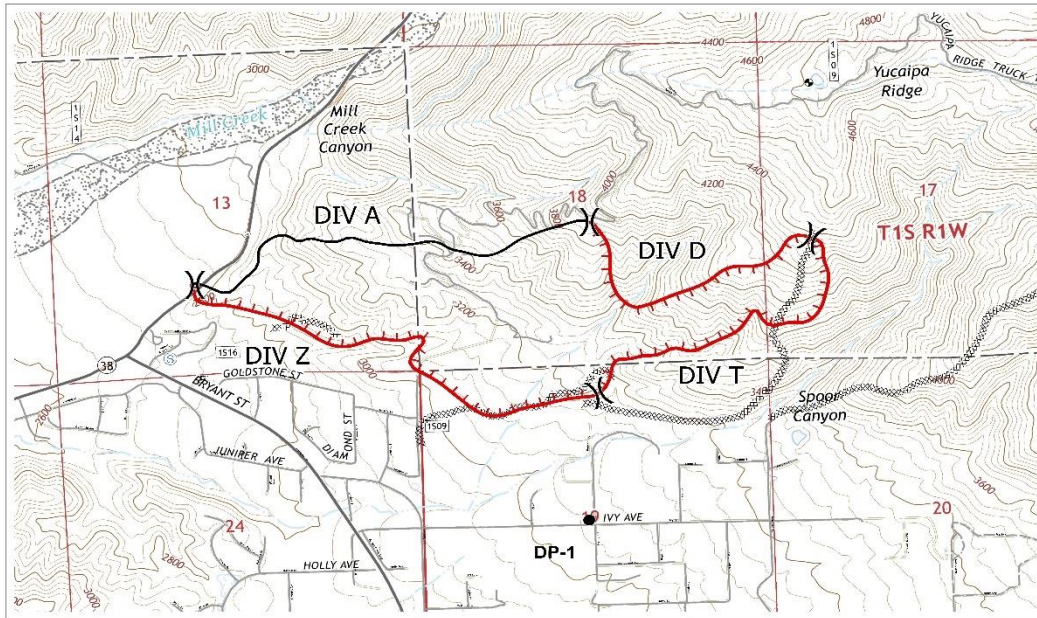
FIRE

*SAN BERNARDINO-INYO-MONO UNIT (BDU) 2020
IGNITION MANAGEMENT PLAN*

Battalion Chief Jack Markle

2019 Ignition Statistics

Bryant 2 Fire



OPERATIONS MAP
BRYANT INCIDENT
CA-BDU-10918
AUGUST 5th, 2017

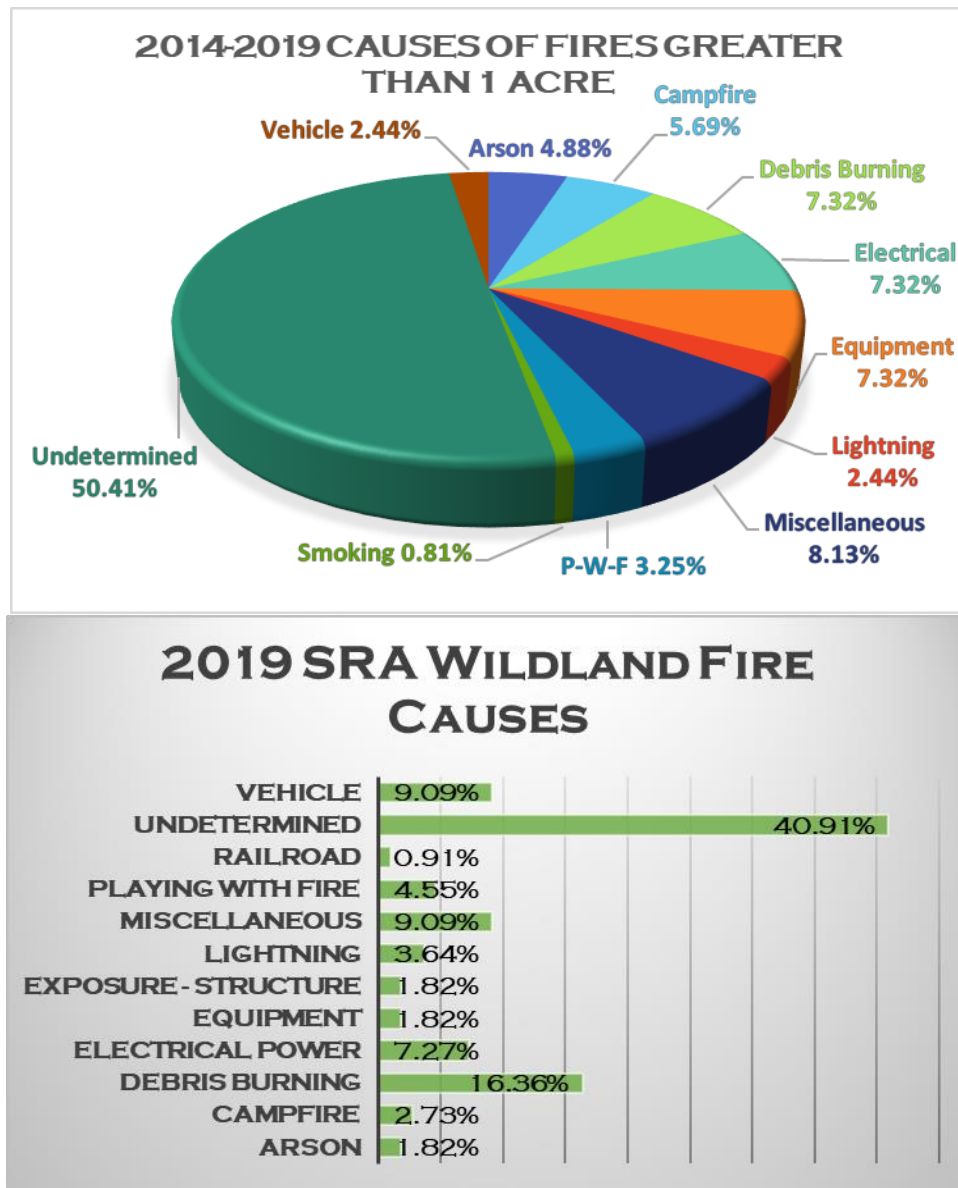


1:4,000

0 0.25 0.5 1 1.5 Miles

325 Acres

FIRE CAUSES:



The Fire Prevention Bureau's Primary targets for the Burn Plan are as follows:

- A. Educate and assist the Chief Officers in the importance of documentation and overall needs to their own battalions pertaining to Fire Prevention.
- B. Defensible Space awareness and public education.
- C. Fire Prevention Signs accountability and maintenance.
- D. Inter acting with the Fire Safe Councils within the Unit and reporting back to the Fire Prevention Bureau of the programs established with the councils.
- E. Identifying and training VIPS for the Fire Prevention Bureau as outlined in policy to reduce liability and assist in the fore mentioned programs. This will enhance the overall goal to accomplish tasks in the Fire Prevention component within the Unit.
- F. Recruitment of VIP's throughout the Unit.
- G. Establish the Unit Fire Permit Administrative Burn Plan

EXHIBITS: MAPS

Direct Protection Area: San Bernardino County

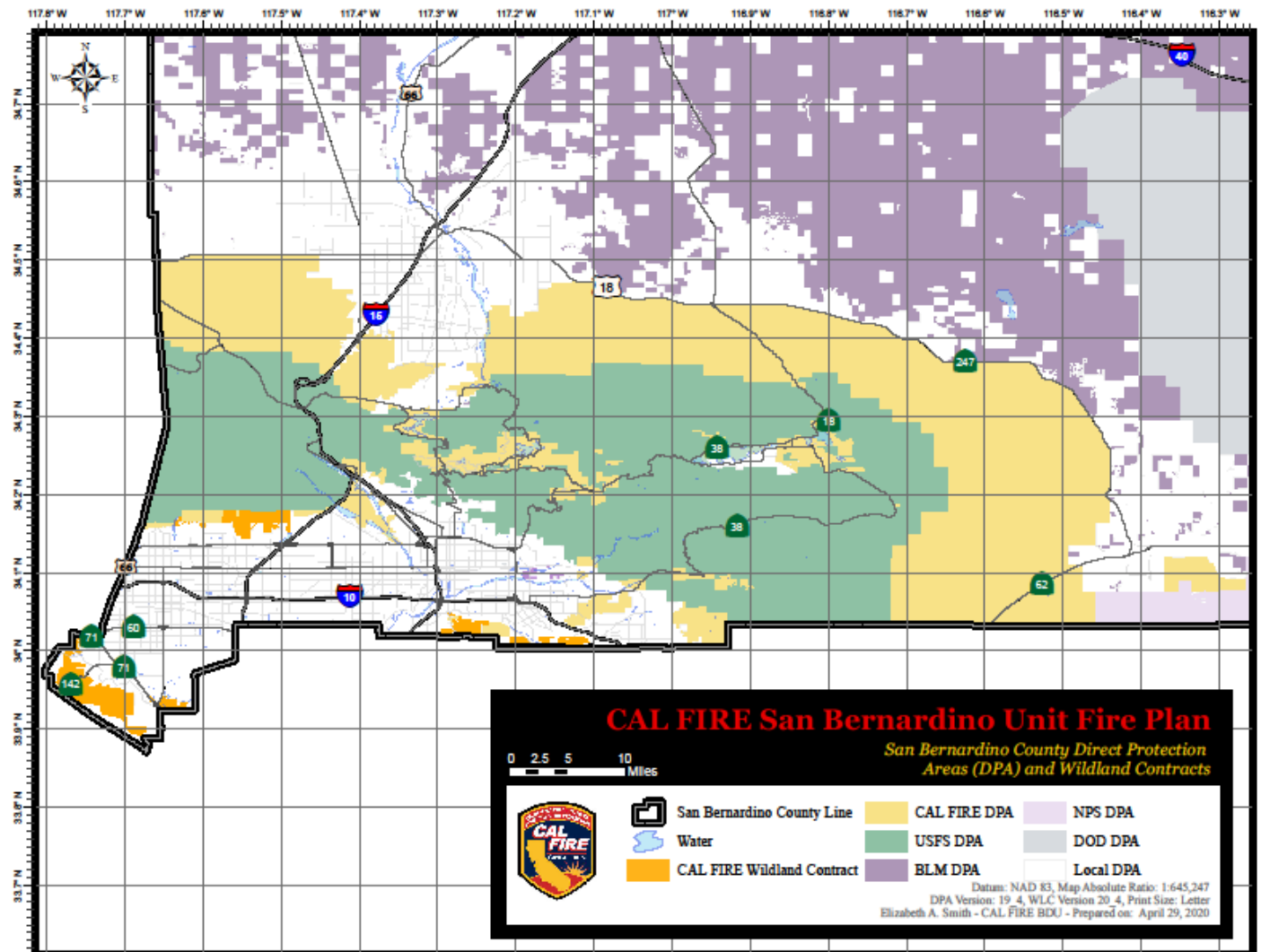


Figure 3 Direct Protection Areas: San Bernardino County

Direct Protection Area: Inyo and Mono Counties (Owens Valley)

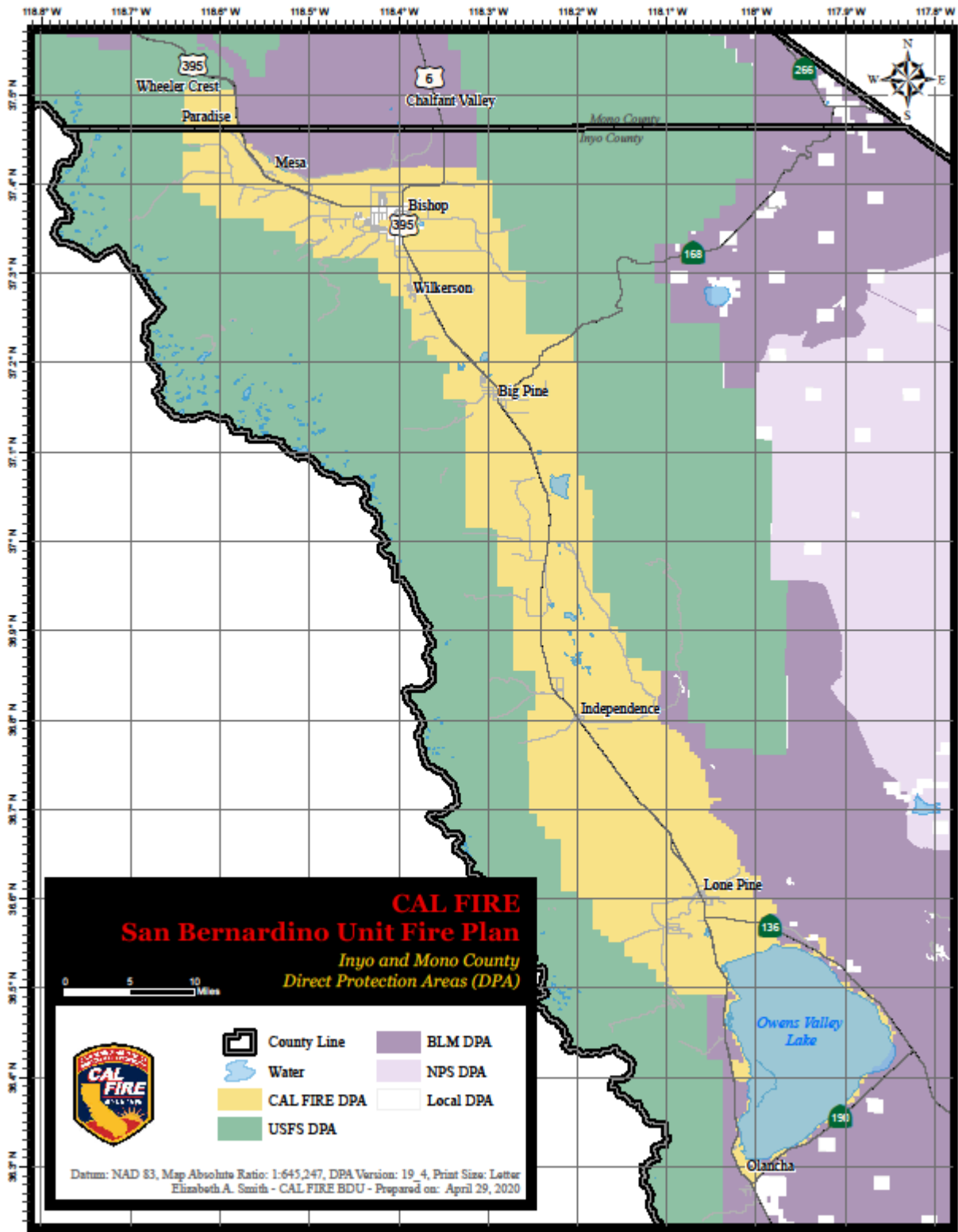


Figure 4 Direct Protection Areas: Inyo and Mono Counties

CAL FIRE Wildland Contracts and City Contracts

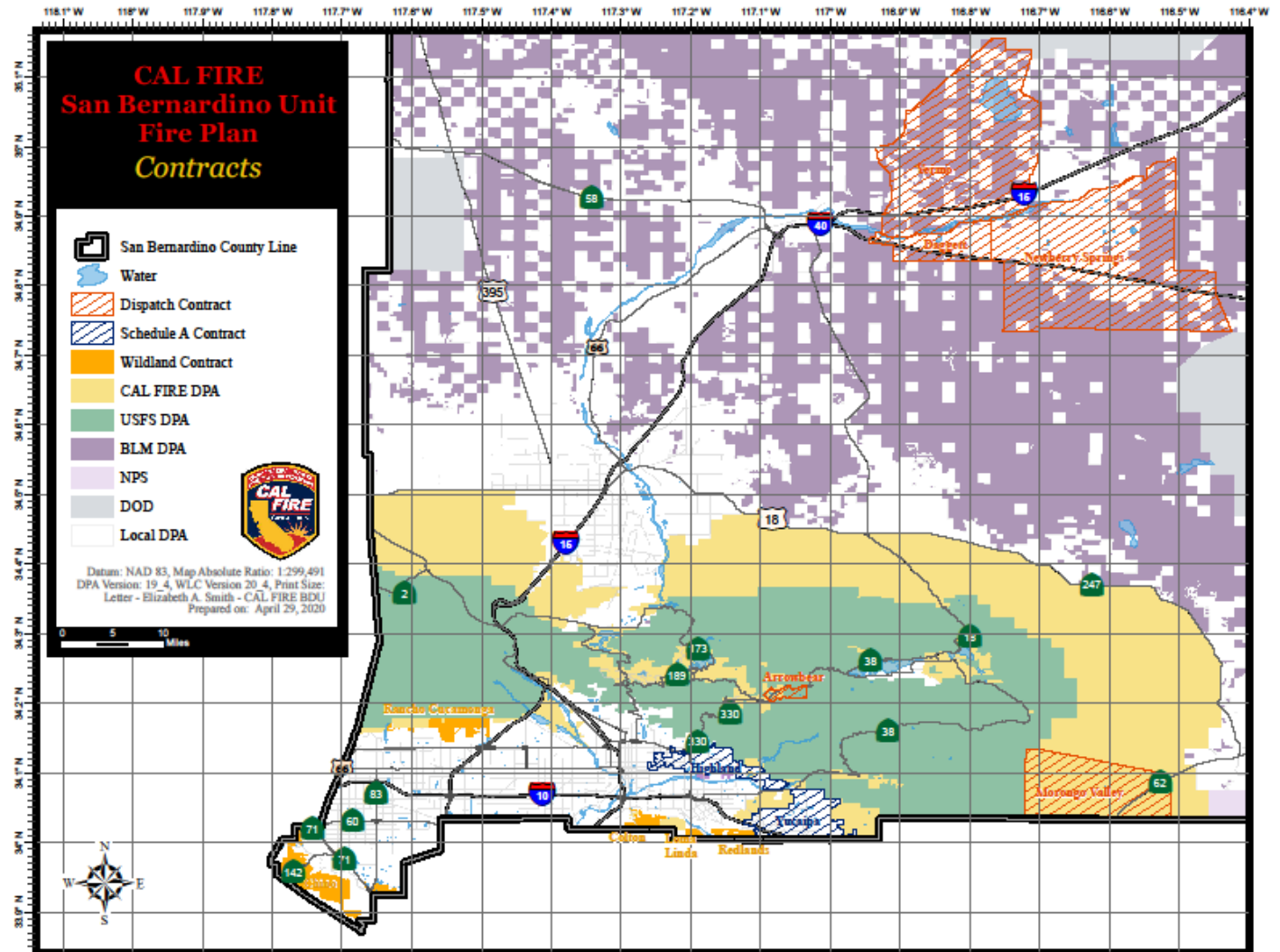


Figure 5 CAL FIRE Wildland Contract and City Contracts

Mutual Threat Zone: San Bernardino County

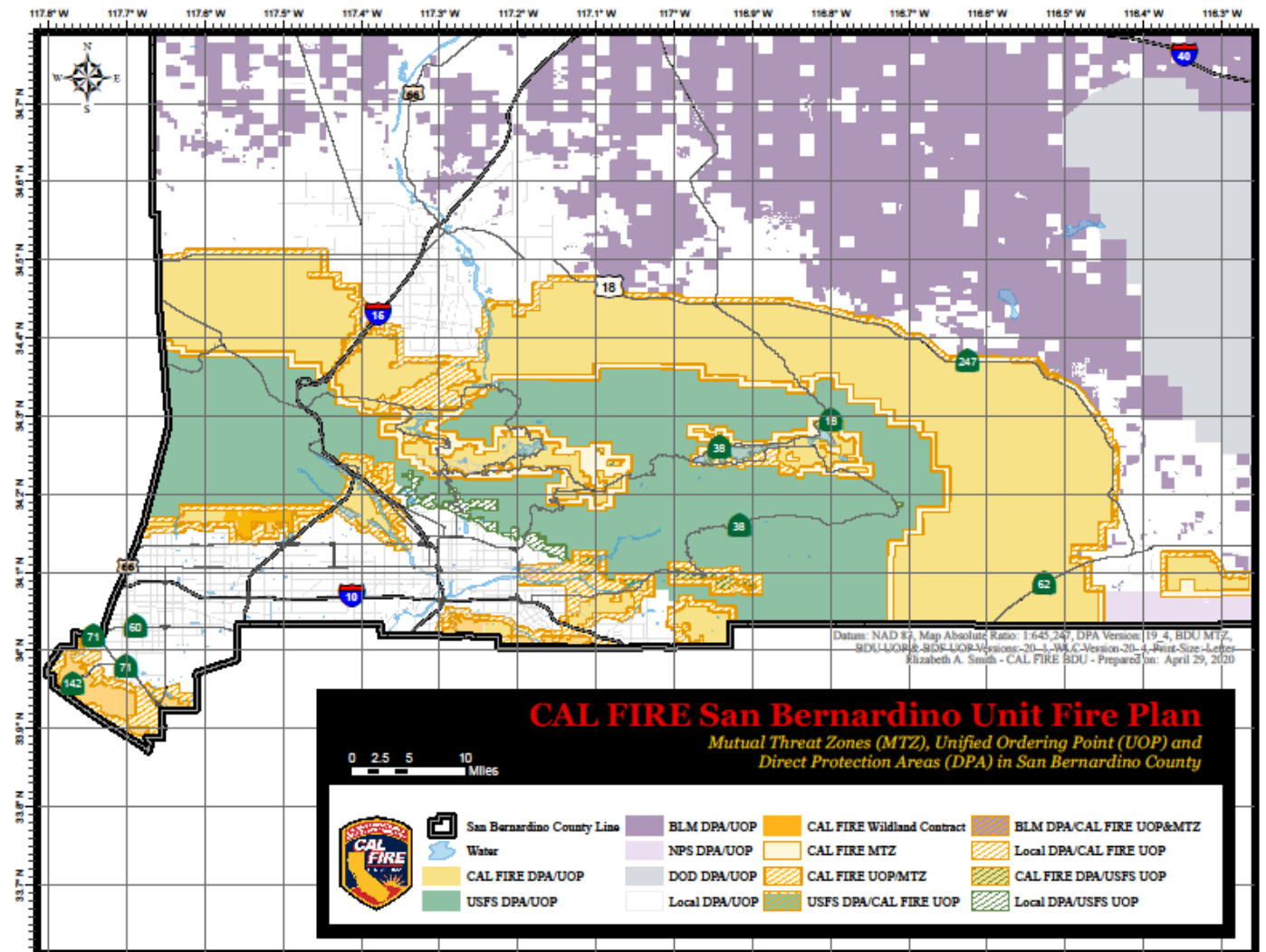


Figure 6 Mutual Threat Zone: San Bernardino County

Solar Mutual Threat Zone

SOLAR Mutual Threat Zone (MTZ)

San Bernardino - Orange - Los Angeles - Riverside

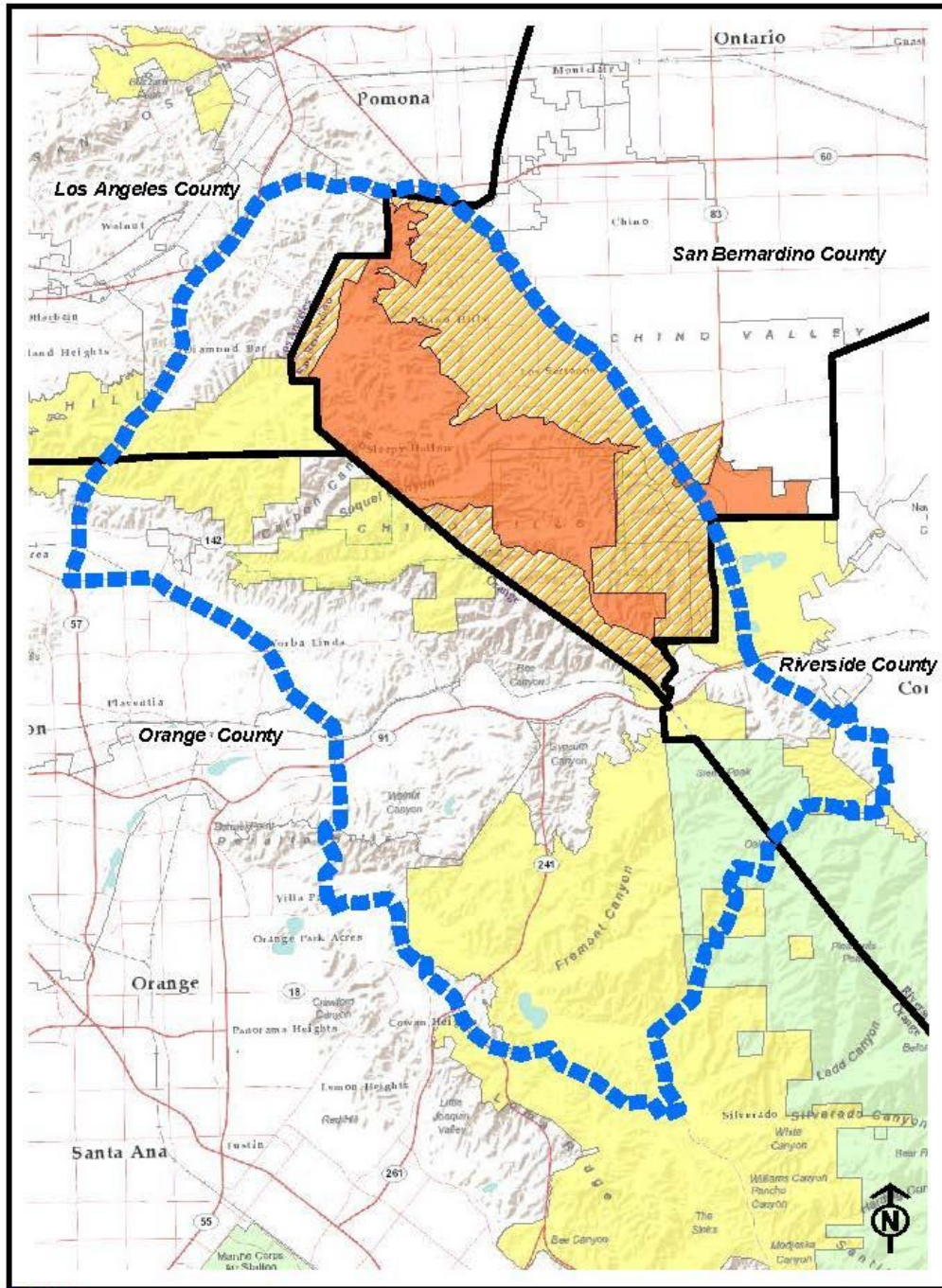


Figure 7 SOLAR Mutual Threat Zone (MTZ)

APPENDIX A: PRE-FIRE PROJECTS



PRE-FIRE PROJECTS

San Bernardino Unit (BDU)

FirePlan	ANF Big Pines Site Preparation	Active	
FirePlan	BDU Cistern Project	Active	
FirePlan	Bear Valley Chipping Program	Active	11,138.32
FirePlan	Bear Valley Hazardous Tree Removal	Planned	10,594.46
VMP	Benton Hot Springs Prescribed Fire	Complete	3.11
CFIP	Big Hot Springs Ranch LLC CFIP 2017	Planned	
FirePlan	Big Pines-Ball Flat Area	Active	26.57
FirePlan	CWPP Swall Meadows/Paradise Camp	Active	
FirePlan	CWPP Web-Based Map Interface Expansion	Active	
FirePlan	Camp Whittle Fuels Reduction Project	Planned	
FirePlan	Chino Hills State Park	Active	
FirePlan	Communication Sites	Active	3.51
FirePlan	Community Defense Program	Planned	
FirePlan	Defensible Space Fuel Treatment Project	Active	7,784.01
CFIP	Emery Forest CFIP 2017	Complete	199.45
FirePlan	Fire Prevention Billboards	Active	
FirePlan	Fire Prevention Materials	Active	
FirePlan	Forest Lawn Scout Reservation	Active	2,433.98
FirePlan	Green Valley SRA FPF	Planned	1,503.80
CFIP	HUBERT EATON CFIP	Planned	
FirePlan	Hazardous Tree Removal	Active	253,014.24
FirePlan	High Desert Chipping Project	Active	
FirePlan	LADWP- Billy Lake	Active	490.95
FirePlan	LADWP- Twin Lakes	Active	357.67
VMP	Long Pond VMP	Active	319.57
FirePlan	MRFSC Community Chipper Days 2017	Planned	
FirePlan	Mammoth Trails	Active	40.81
FirePlan	Mormon Rocks Lop & Scatter	Active	
FirePlan	Mt. Rim FSC Haz Tree Removal Assistance	Active	

FirePlan	Owens Valley Fuel Break	Active	
FirePlan	Owens Valley VMP Bishop	Active	
FirePlan	Pilot Rock	Planned	58.52
CFIP	Poore CFIP 2018	Active	38.42
FirePlan	Poppy Reserve Pile Burning	Active	
FirePlan	Poppy Reserve Piling	Active	
FirePlan	SBCo Flood Control	Planned	186.15
FirePlan	SRA Hazardous Tree Mitigation Program	Planned	11,463.91
FirePlan	Salt Cedar Pile Burn Project	Planned	
FirePlan	Sawmill Fuels Reduction Project	Active	233.76
FirePlan	Smiley Park/Camp Whittle Reforestation	Planned	232.30
FirePlan	Smokey Bear Park	Active	
FirePlan	Swall Meadows Fuels Reduction	Planned	172.44
FirePlan	Tanbark Fuels Reduction	Active	44.78
FirePlan	Tehachapi Prison Lop & Scatter	Active	
FirePlan	VMP Tools and Equipment	Planned	
FirePlan	Wilkerson Fuelbreaks Project	Active	17.67
VMP	Winterton VMP	Active	94.05
	Totals		300,452.45

PRE-FIRE PROJECTS REPORT DEFFINITIONS

Report Overview

This report provides a list of projects within CalMAPPER for a given Unit and date range, with associated program, status, and treatment acres. This report is run annually and is included as an appendix in the Unit Fire Plans.

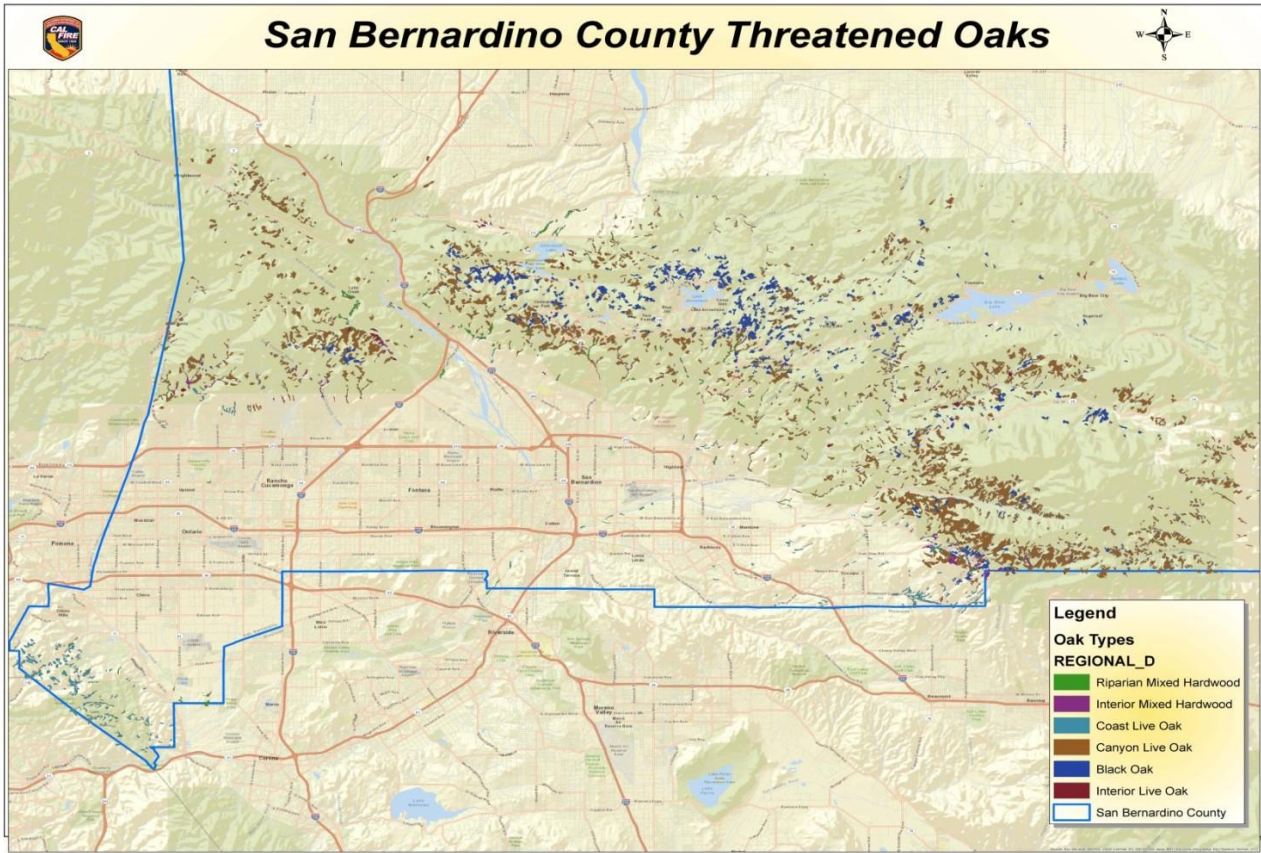
Definitions

Treatment Footprint Acres - This number reports the sum of the auto-calculated acres for the polygon treatments within the given project. If treatments overlap, the area of overlap will be counted for each treatment.

Information included in this report

- ☐ Includes projects from all three programs.
- ☐ Includes projects regardless of status (planned, active, and complete are all included).
- ☐ Only includes projects for the unit specified at report run-time, as shown in the report title.
- ☐ Only includes projects whose project start date is on or prior to the end date chosen for the report, and whose project end date is on or after the start date chosen for the report. Projects with a valid start date but no end date are also included; projects with no start date are not included.

APPENDIX B: SAN BERNARDINO UNIT- THREATENED OAKS



APPENDIX C: ANNUAL ACCOMPLISHMENTS REPORTING (2019)

The San Bernardino Unit Strategic Fire Plan sets forth a vision to identify and evaluate wildland fire hazards and recognize life, property and natural resources at risk including watersheds and wildlife habitats, social impacts and other values of functioning ecosystems. In 2019, the San Bernardino Unit continued to make great strides in fostering inter-agency relations, collaboration, and abiding by the goals and objectives set forth in the Strategic Fire Plan for California.

In 2019, the San Bernardino Unit received a Caterpillar 299 skid steer with masticator, brush rake, bucket, and grapple attachments as well as a Bandit track chipper.

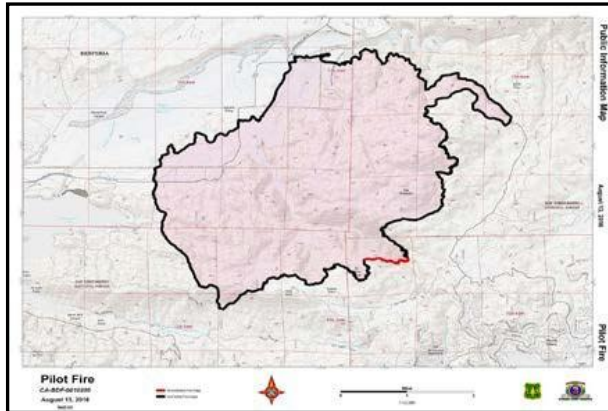


Figure 8 Pilot Fire

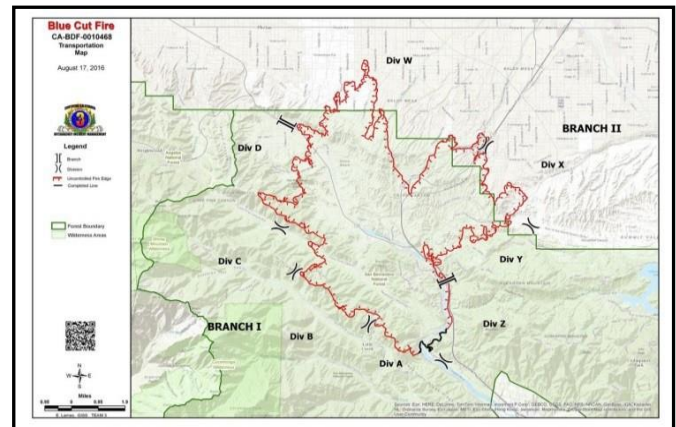


Figure 9 Blue Cut Fire

In 2019, the Unit completed the 390-acre Long Pond VMP and 180-acre Winterton VMP prescribed burn projects in the Owens Valley.



Long Pond VMP – Owens Valley



Winterton VMP – Owens Valley

2019-2020 Fire Prevention grants were awarded to the Wheeler Crest Fire Protection District for the Swall Meadows Fuel Reduction project in Mono County and to the Mountain Rim Fire Safe Council for the Abatement Assistance 2020 grant in San Bernardino County. 2017 and 2018 Fire Prevention grant projects continued with implementation, supporting fuel reduction and education programs in Big Bear City, Running Springs, Crest Forest, Arrowbear, Crestline, Valley of Enchantment, Twin Peaks, Green Valley Lake, Lake Arrowhead communities, and Mammoth. (see Appendix A for a complete list of projects).

Unit personnel continued work on fuel reduction projects in the San Bernardino Mountains including the Camp Whittle fuel reduction project in Fawnskin, the Hubert Eaton Scout Reservation fuel reduction project in Cedar Glen, and the Sawmill fuel reduction project in Twin Peaks. A contract was executed with Cecil Logging to complete approximately 100 acres of mastication work at Hubert Eaton in 2020. The Unit skid steer was used to complete the 49 acres of mastication on the Camp Whittle project. CAL FIRE Region Fuels Crew 361 completed approximately half of the 95 acres of hand treatment at Camp Whittle, utilizing the Unit track chipper.

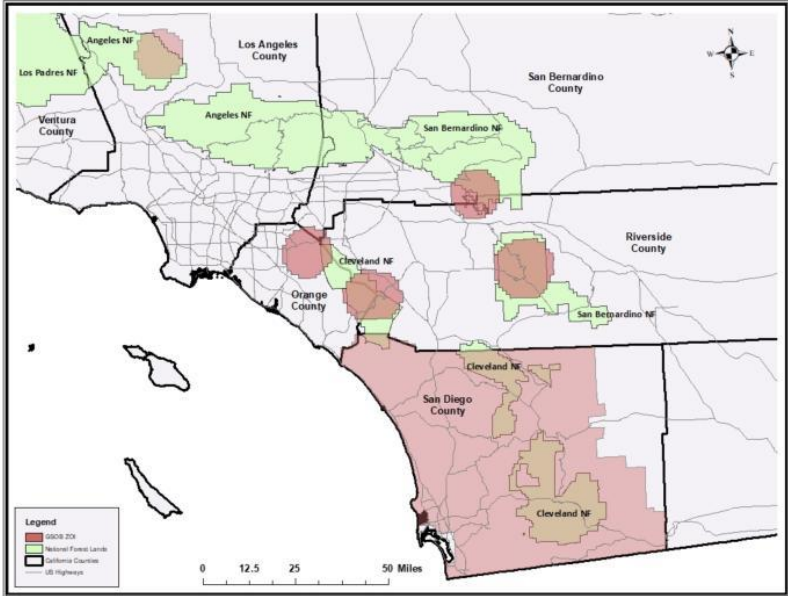
The San Bernardino Unit is collaborating with communities and stakeholders to limit the movement of goldspotted oak borer (GSOB). GSOB was found in Oak Glen in San Bernardino County in 2018 and in Big Bear and Wrightwood in San Bernardino County in 2019. It is believed to have been transported into and throughout southern California via movement of infested firewood. The infested trees identified in Big Bear and Wrightwood were removed in 2019 by the Pilot Rock hazard tree crew. Stakeholders representing local, state, and federal governments, non-profits, academia, and the public met to develop a GSOB response plan focusing on surveying, monitoring, outreach, and education. Several workshops were held throughout the San Bernardino mountains to educate the public about the history of the beetle in southern California, the life cycle of the beetle, and identification and management of infested trees. Additionally, numerous GSOB trainings were provided to tree professionals and other outdoor workers in the mountains focused on identification and reporting of infested trees. The group will continue to meet throughout 2020 and into the future, addressing the evolving GSOB situation in San Bernardino County.

The CAL FIRE San Bernardino Unit and Southern California Edison completed the 17th year in Operation Santa Ana. Operation Santa Ana was initiated in 2000 as a response to many fires caused by power poles, powerlines, and equipment. Prior to the beginning of Operation Santa Ana approximately 50% of the large and damaging wildfires in Southern California were due to powerlines and equipment issues. There has not been a major wildland fire caused by Edison pole or powerlines in the San Bernardino County areas where CAL FIRE is responsible for protection since the program began.

The Fire Prevention Public Information Office (PIO) actively works with the media to keep the public informed on fire safety, wildfire awareness, and resource management issues. PIO's utilized social media and press releases throughout the year to remind residents of items such as: defensible space requirements, burn permit requirements, burn permit restrictions, ready-set-go campaign information, wildland fire incident information, tree mortality and bark beetle issues, and fire prevention fee grant opportunities.

The Volunteers in Prevention (VIP) program in the San Bernardino Unit has been steadily rebuilding since July 2015. We currently have 12 VIPs and are continuing to recruit, especially in the northern areas of the Unit. The VIPs have a wide variety of educational backgrounds and have been extremely helpful with our ECC, public events, LE-100 program, resource management department, clerical work and much more.

2019 GSOB Zones of Infestation



2019 GSOB Zones of Infestation



Figure 10 GSOB Tree Removal-Sugarloaf



Figure 11 Sample of GSOB galleries in infested tree

The San Bernardino Unit is actively working with local, state, and federal agencies to help prevent catastrophic wildfires through projects related to public safety, fuel reduction, and education. The mission of the San Bernardino Unit is “work together today for a healthier, safer, and more resilient tomorrow.”

Shane Judd
San Bernardino Unit Chief